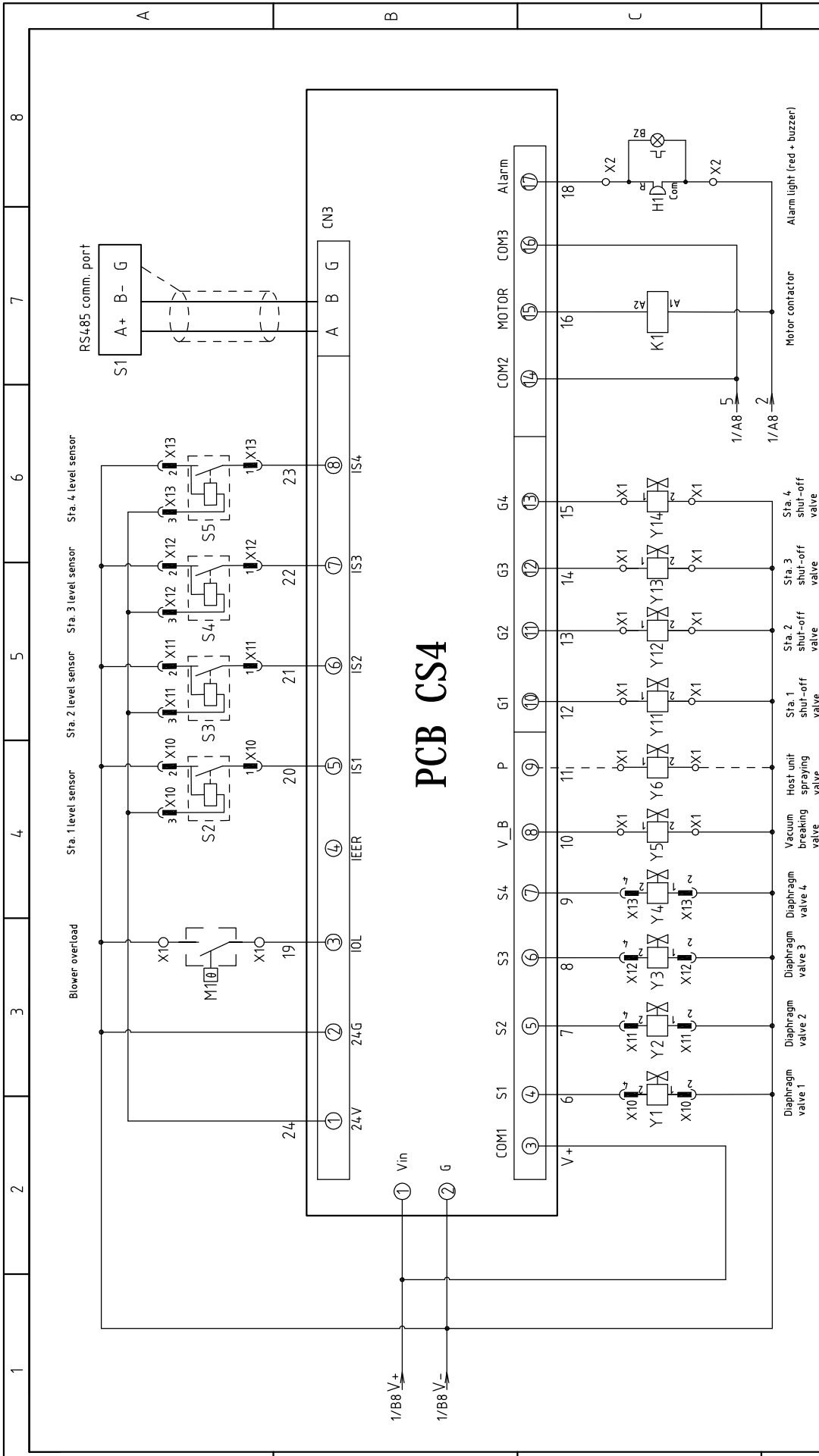


机型版本 Ver.D

D	Title		Drawing NO.		Scale	Page
	SAL-2HP-UG124		SAL-2HP-UG124-CE-400V-G-1		Standard	Totally
Main Circuit Diagram		SHINI		Voltage		Pages
		信易电热机械股份有限公司 Shini Plastics Technologies, Inc.		Frequency		3Φ400V
Mark	Before modification	Modified by	Modify date	Checked by	Date	50HZ
1	2	3	4	5	6	7
						8

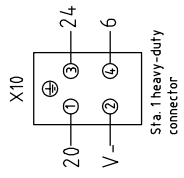


PCB CS4

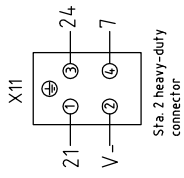
机型版本 Ver.D		Title		SAL-2HP-UG124		Drawing NO.		SAL-2HP-UG124-CE-400V-G-2		Scale		Page	
		Version		Control Circuit Diagram				Standard		CE		Totally 4	
Mark		After modification		Date		20191220		Voltage		3φ400V		Pages	
Modified by		Modify date		Checked by				Frequency		50HZ		8	

Notes: M1 is the thermal protector inside the suction blower.

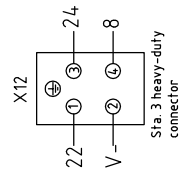




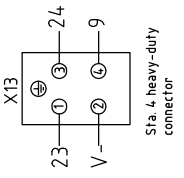
Pin No.	Function	Description
1	Level signal (SENS)	Connect to level sensor 1
2	GND(COM)	
3	24V+	
4	Connect to diaphragm valve 1	24VDC solenoid valve



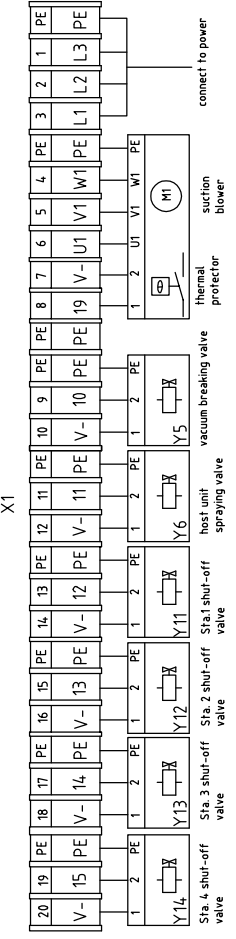
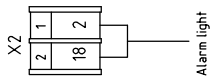
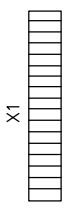
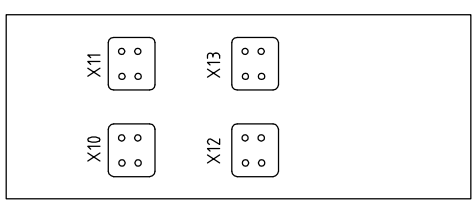
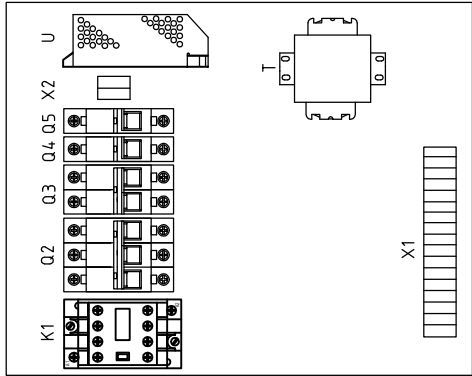
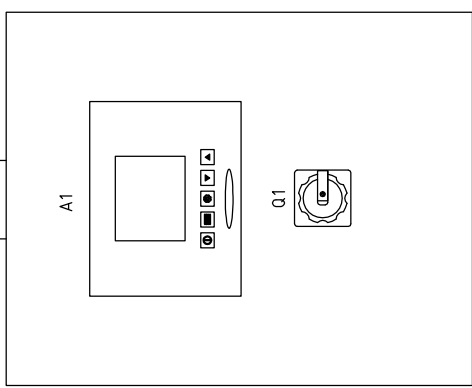
Pin No.	Function	Description
1	Level signal (SENS)	Connect to level sensor 2
2	GND(COM)	
3	24V+	
4	Connect to diaphragm valve 2	24VDC solenoid valve



Pin No.	Function	Description
1	Level signal (SENS)	Connect to level sensor 3
2	GND(COM)	
3	24V+	
4	Connect to diaphragm valve 3	24VDC solenoid valve



Pin No.	Function	Description
1	Level signal (SENS)	Connect to level sensor 4
2	GND(COM)	
3	24V+	
4	Connect to diaphragm valve 4	24VDC solenoid valve



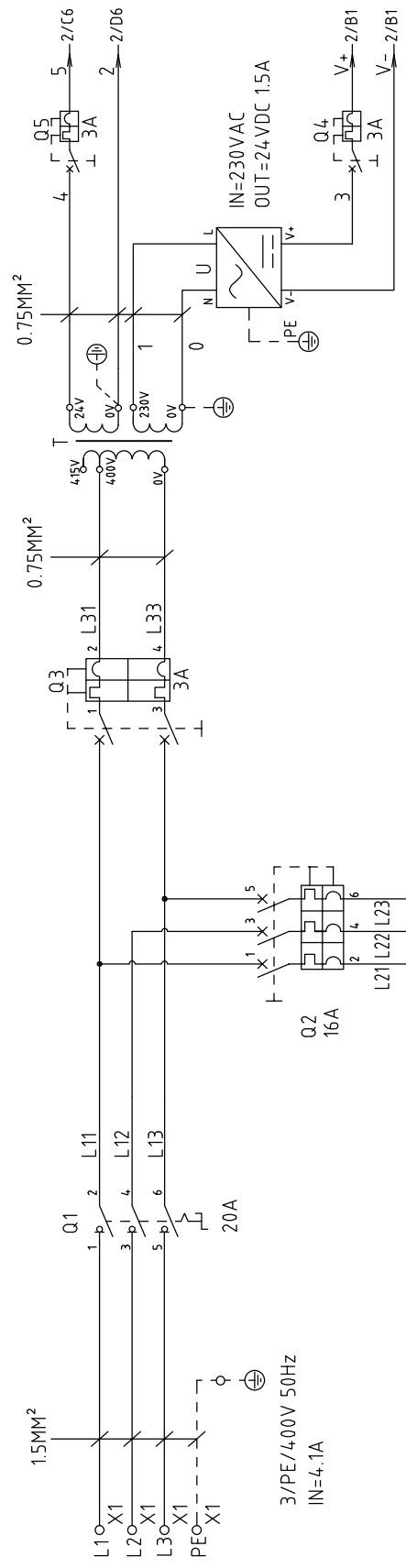
机型版本 Ver.D

Title		Version		Drawer		Design		Proofread by		Checked by		Date	
SAL-2HP-UG124		G										20191220	
Drawing NO.		Approved by		Designer		Proofread by		Checked by		Date		20191220	
SAL-2HP-UG124-CE-4.00V-G-3												20191220	
Elec. Parts Layout & Wiring Diagram												20191220	
Scale		Version		Drawer		Design		Proofread by		Checked by		Date	
Standard		G										20191220	
CE												20191220	
Voltage		Approved by		Designer		Proofread by		Checked by		Date		20191220	
3φ4.00V												20191220	
Frequency		Version		Drawer		Design		Proofread by		Checked by		Date	
50HZ		G										20191220	
Page 3		Approved by		Designer		Proofread by		Checked by		Date		20191220	
Totally 4												20191220	
Pages		Version		Drawer		Design		Proofread by		Checked by		Date	
3		G										20191220	
Standard		Approved by		Designer		Proofread by		Checked by		Date		20191220	
CE												20191220	
Voltage		Approved by		Designer		Proofread by		Checked by		Date		20191220	
3φ4.00V												20191220	
Frequency		Version		Drawer		Design		Proofread by		Checked by		Date	
50HZ		G										20191220	



信易電熱機械股份有限公司
Shini Plastics Technologies, Inc.

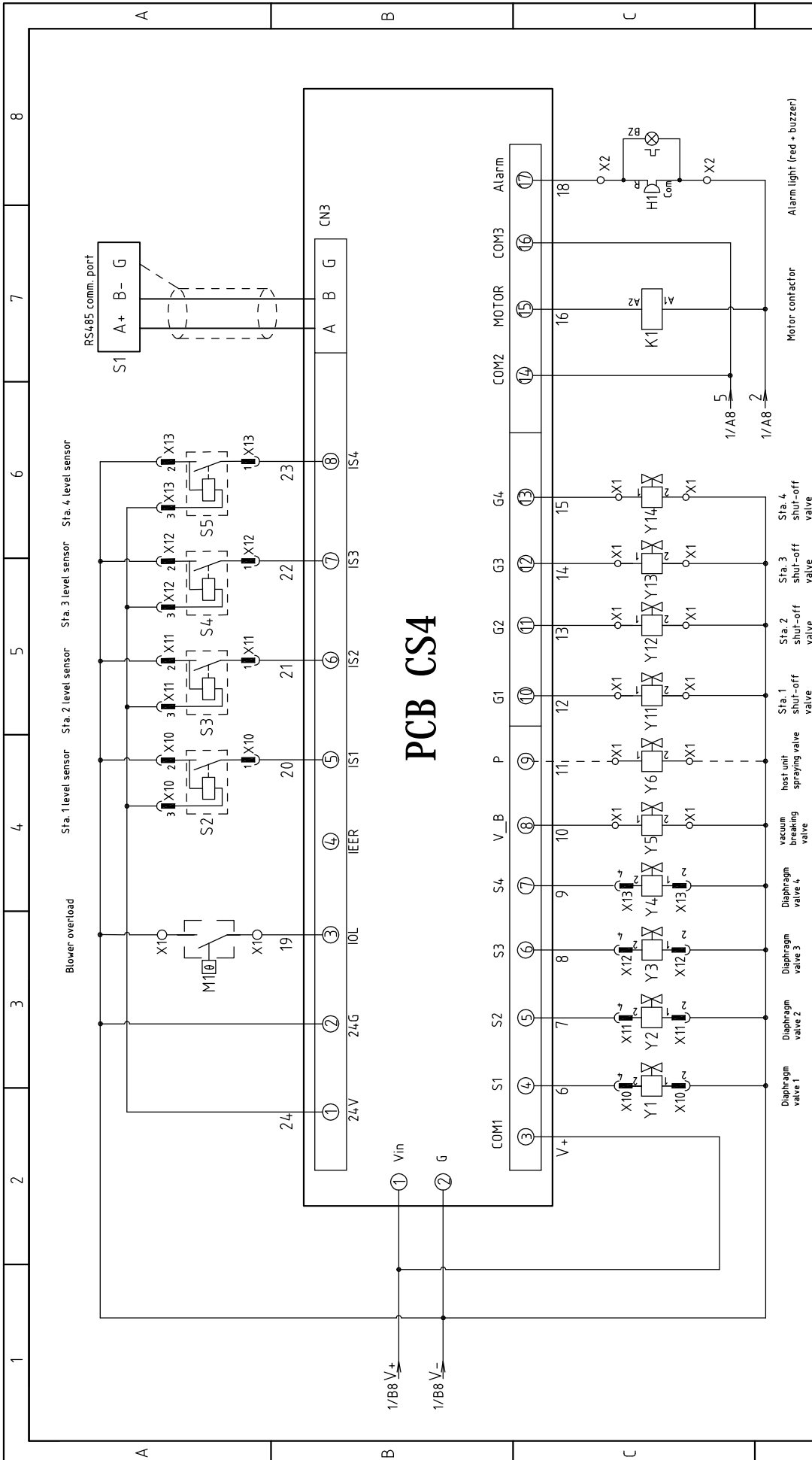
1	2		3	4	5	6	7	8	
NO	Symbol	Name	Manufacturer	Type	Specification	Number	Material number	Remark	
									A
1	Q1	Main Switch	EATON	T0-2-1/EA/SVB	20A	1	YE10021160000		
2	Q2	Circuit-Breakers	TECO	BM-63C/3016S	16A	1	YE40301603000		
3	Q3	Circuit-Breakers	TECO	BM-63C/2003S	3A 2P	1	YE40200203000		
4	Q4 Q5	Circuit-Breakers	TECO	BM-63C/1003S	3A 1P	2	YE40100203000		
5	K1	Contactors	SCHNEIDER	LC1-D09B7C	24V 50/60Hz	1	YE00972400000		
6	A1	Controller	YUYUN	CS4	24VAC/DC	1	YE80042401200		
7	S1	RS-485 comm. interface board	YUYUN	---	Dsub-9pin connector	1	YE90048501200		
8		Shell RS-485(SAL-700G-A-19)ver.0	---	---	---	1	YR40048500000		
9		9-pin serial port connector (male) with shell and screw	---	---	---	1	YE62090000000		
10	H1	Alarm light board	HONGYUN	Redyel.gre.+ buzzer	24VAC/DC	1	BL90000011520		
11	T	Transformer	JIUXIN	400V/415V OUT=24V /230V	50VA 500MA	1	YE70040007100		
12	U	DC power	---	S-35-24	24VDC 1.5A	1	YE71352400000		
13	X1 X2	Terminal Board	HONEYWELL	SK2.5	2.5mm ²	22	YE60002503200		
14		Terminal Board	HONEYWELL	GK2.5PE	2.5PE	9	YE60002503400		
15		Terminal fittings E/GK series	HONEYWELL	---	PCS	6	YE60000003900		
16	X10~X13	Heavy duty connectors	HARTING	Han E-4F(female)	4P	4	YE68000401400		
17	M	Blower	SHINI	RB-420 with thermal prof.	2HP 400V 50HZ	1	---	(1)	
18	Y1~Y6	Solenoid valve	AIRTAC	---	24VDC	6	---	(1)	
19	Y11~Y14	Solenoid valve	AIRTAC	---	24VDC	4	---	(1)	
20	S2~S5	Photoelectricity switch	FOTEK	MT-4,MNO-30VDC	10...30VDC	4	---	(1) Photosensor hopper receiver	
21		Magnetic proximity switch	SONON	BN12-30BLA	24VDC	4	---	(1) Vacuum hopper receiver	
<p>机型版本 Ver.D Notes: (1)Non-control box installation.</p>									
				Drawer	Version	G	Title		
				Designer	Approved by	SAL-2HP-UG124			
				Proofread by	Elec. Parts List 1				
				Checked by	Date	20191220			
				Modified by	Modify date				
				After modification					
				Before modification					
				Mark					
				Scale	Standard		CE		
				Page		4		4	
				Voltage		3φ400V		50Hz	
				Frequency		50Hz		50Hz	
				Totally		4		4	
				Pages		4		4	
				Drawing NO.		SAL-2HP-UG124-CE-400V-G-4			
				SHINI		信易电热机械股份有限公司 Shini Plastics Technologies, Inc.			
				5		6		7	
				8		7		8	



机型版本 Ver.C

D	Scale	Standard	CE	Page	1
	Drawing NO.		SAL-3HP-UG124-CE-400V-G-1		
Title		SAL-3HP-UG124 Main Circuit Diagram			
Mark	Before modification	Modified by	Modify date	Checked by	Date
					20191220
Version		G			
Approved by					
Version		G			
Title		SAL-3HP-UG124 Main Circuit Diagram			
Drawing NO.		SAL-3HP-UG124-CE-400V-G-1			
Standard		CE			
Voltage		3 ϕ 400V			
Frequency		50Hz			
Page		1			
Totally		4			
Pages		3 ϕ 400V			
Frequency		50Hz			



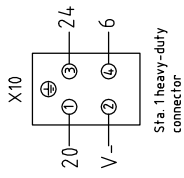


PCB CS4

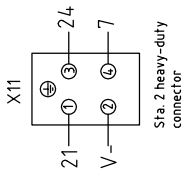
初型版本 Ver.C		Title		Drawing NO.		Scale		Page	
		SAL-3HP-UG124		SAL-3HP-UG124-CE-400V-G-2		Standard		CE	
		Version		G		Voltage		3φ400V	
		Approved by				Frequency		50HZ	
		Designer				Totally		4	
		Proofread by				Pages		3	
		Checked by				Date		20191220	
		Modified by				Date		20191220	
		After modification				Date		20191220	
		Before modification				Date		20191220	
		Mark				Date		20191220	

Notes: M11 is the thermal protector inside the suction blower.

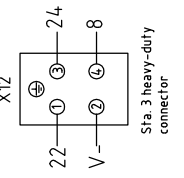




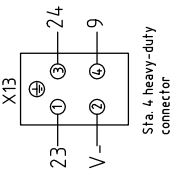
Pin No.	Function	Description
1	Level signal (SENS)	Connect to level sensor 1
2	GND (COM)	
3	24V+	Connect to diaphragm valve 1
4	Connect to diaphragm valve 1	



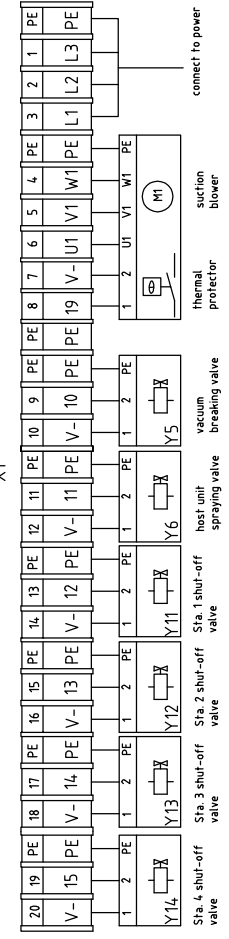
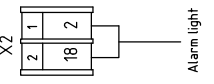
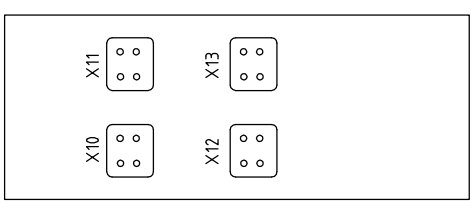
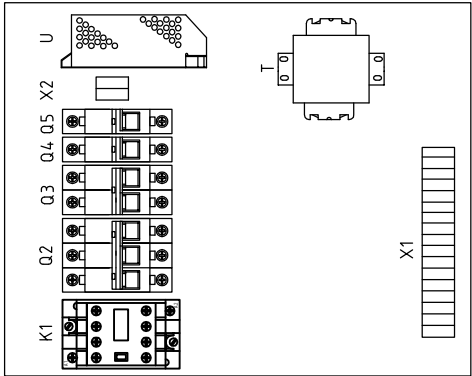
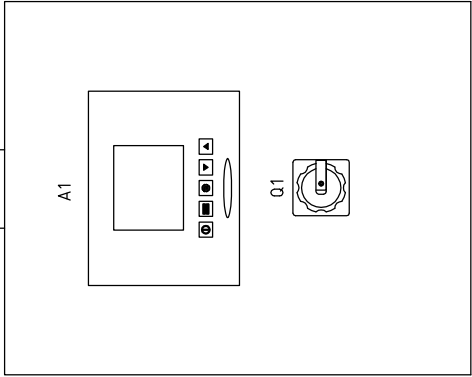
Pin No.	Function	Description
1	Level signal (SENS)	Connect to level sensor 2
2	GND (COM)	
3	24V+	Connect to diaphragm valve 2
4	Connect to diaphragm valve 2	



Pin No.	Function	Description
1	Level signal (SENS)	Connect to level sensor 3
2	GND (COM)	
3	24V+	Connect to diaphragm valve 3
4	Connect to diaphragm valve 3	



Pin No.	Function	Description
1	Level signal (SENS)	Connect to level sensor 3
2	GND (COM)	
3	24V+	Connect to diaphragm valve 4
4	Connect to diaphragm valve 4	



机型版本 Ver.C

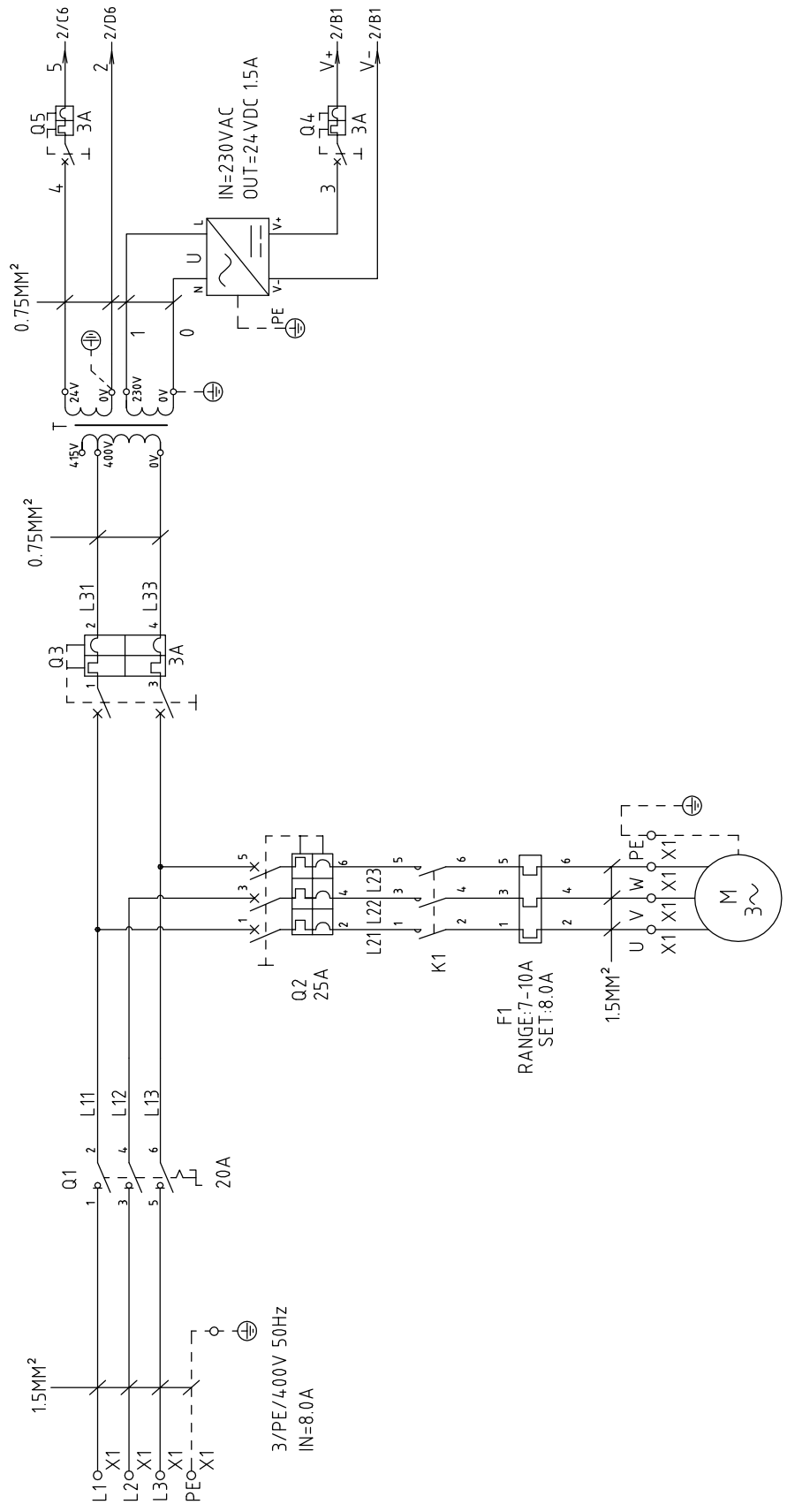
Mark	Before modification	After modification	Modified by	Modify date	Checked by	Proofread by	Designer	Drawer	Version	G	Title	SAL-3HP-UG124		Scale	Page
				20191220							Elec. Parts Layout & Wiring Diagram	SAL-3HP-UG124-CE-400V-G-3		Standard	3
												Voltage		Totally	
												Frequency		4	
												Voltage		Pages	
												Frequency		3	
												Voltage		Totally	
												Frequency		4	
												Voltage		3	
												Frequency		4	
												Voltage		3	
												Frequency		4	
												Voltage		3	
												Frequency		4	



1	2		3	4	5	6	7	8
N0	Symbol	Name	Manufacturer	Type	Specification	Number	Material number	Remark
1	Q1	Main switch	EATON	T0-2-1/EA/SVB	20A	1	YE10021160000	
2	Q2	Circuit-breakers	TECO	BM-63C/3016S	16A	1	YE40301603000	
3	Q3	Circuit-breakers	TECO	BM-63C/2003S	3A 2P	1	YE40200203000	A
4	Q4 Q5	Circuit-breakers	TECO	BM-63C/1003S	3A 1P	2	YE40100203000	
5	K1	Contactors	SCHNEIDER	LCT-D09B7C	24V 50/60Hz	1	YE00972400000	
6	A1	Controller	YUYUN	CS4	24VAC/DC	1	YE80042401200	
7	S1	RS-485 comm. interface board	YUYUN	---	Dsub-9pin connector	1	YE90048501200	
8		Shell RS-485(SAL-700G-A-19)ver. 0	---	---	---	1	YR40048500000	
9		9-pin serial port connector (male) with shell and screw	---	---	---	1	YE62090000000	
10	H1	Alarm light	HONGYUN	Red,yel,gre.+ buzzer	24VAC/DC	1	BL90000011520	
11	T	Transformer	JIUXIN	400V/415V OUT=24V /230V	50VA 500MA	1	YE70040007100	B
12	U	DC power	---	S-35-24	24VDC 1.5A	1	YE71352400000	
13	X1 X2	Wiring terminal	HONEYWELL	SK2.5	2.5mm ²	22	YE60002503200	
14		Wiring terminal	HONEYWELL	GK2.5PE	2.5PE	9	YE60002503400	
15		Terminal fittings E/GK series	HONEYWELL	---	PCS	6	YE60000003900	
16	X10~X13	Heavy duty connectors	HARTING	Han E-4F(female)	4P	4	YE68000401400	
17	M	Blower	SHINI	RB-430 with thermal prot.	5HP 400V 50HZ	1	---	(1)
18	Y1~Y6	Solenoid vavle	AIRTAC	---	24VDC	6	---	(1)
19	Y11~Y14	Solenoid vavle	AIRTAC	---	24 VDC	4	---	(1)
20	S2~S5	Photosensor switch	FOTEK	MT-4MNO-30VDC	10...30VDC	4	---	(1) Photosensor hopper receiver
21		Reed switch	SONON	BN12-30BLA	24 VDC	4	---	(1) Vacuum hopper receiver
机型版本 Ver.C								
Notes: (1)Non-control box installation.								
D			Title		Drawing NO.		Page	
			SAL-3HP-UG124		SAL-3HP-UG124-CE-400V-G-4		4	
			Elec. Parts List 1		Standard		CE	
					Voltage		3φ400V	
					Frequency		50Hz	
Mark			Before modification		Modified by		Modified date	
1			2		3		4	
5			6		7		8	



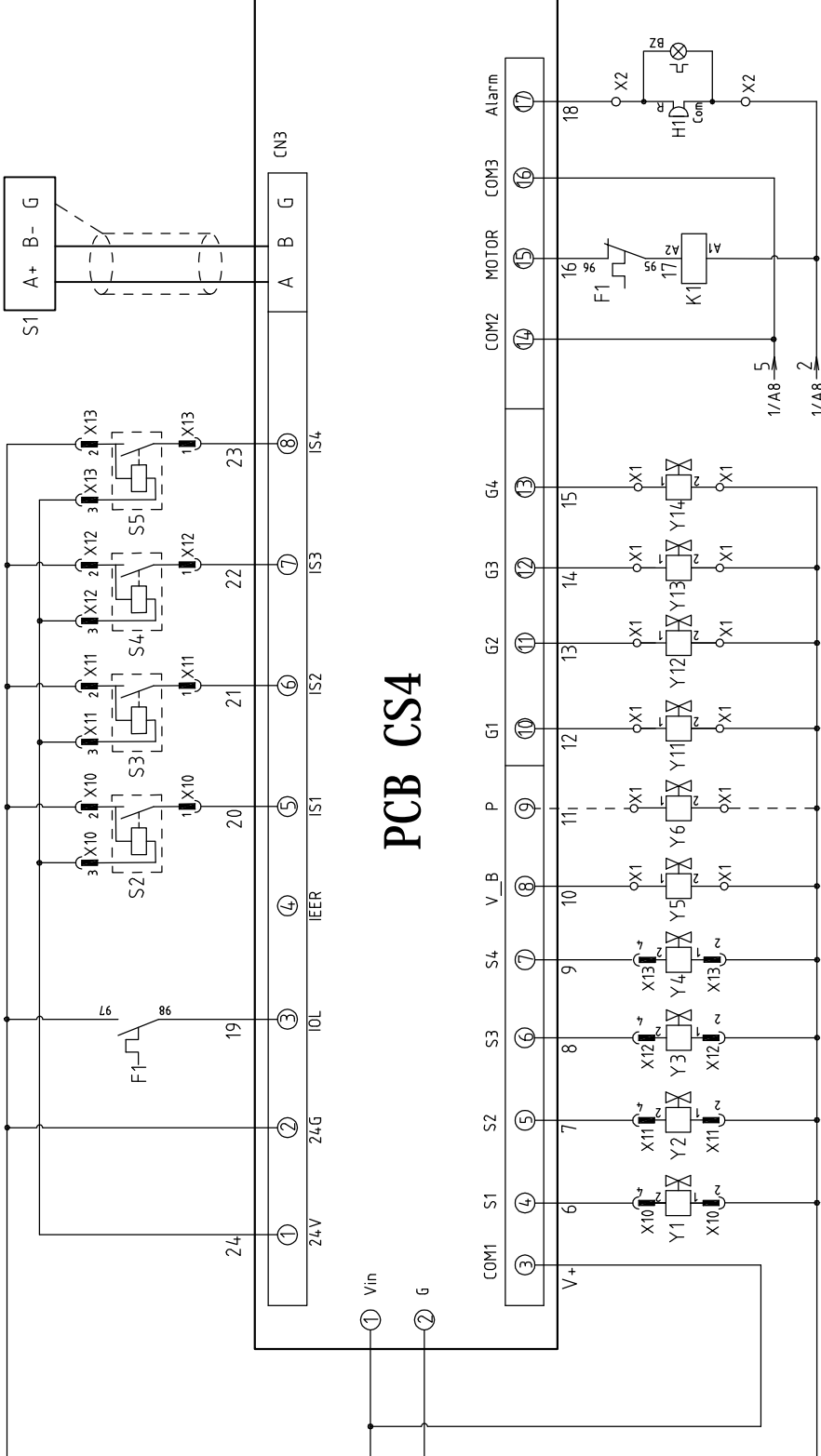
信易電熱機械股份有限公司
Shini Plastics Technologies, Inc.



机型版本 Ver.E

1	2	3	4	5	6	7	8	
1	2	3	4	5	6	7	8	
Title			Version		H		Scale	
SAL-5HP-UG124			Approved by				Standard	
Main Circuit Diagram			Checked by				Voltage	
SHINI			Date		20191220		Frequency	
信易电热机械股份有限公司 Shini Plastics Technologies, Inc.			Modified by				3φ400V	
Drawing NO.			Modified date				50HZ	
SAL-5HP-UG124-CE-400V-H-1			After modification				Page 1	
SHINI			Before modification				Totally 4 Pages	

Blower overload
 Sta. 1 level sensor
 Sta. 2 level sensor
 Sta. 3 level sensor
 Sta. 4 level sensor



PCB CS4

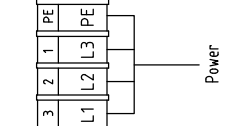
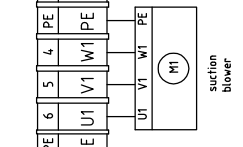
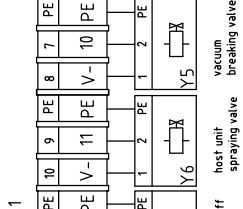
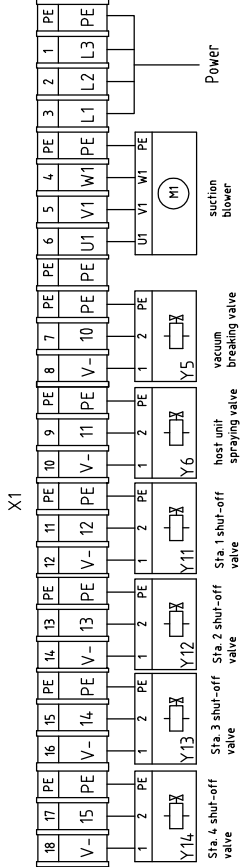
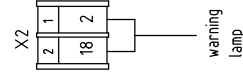
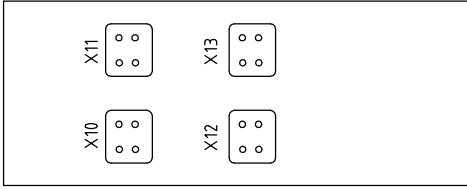
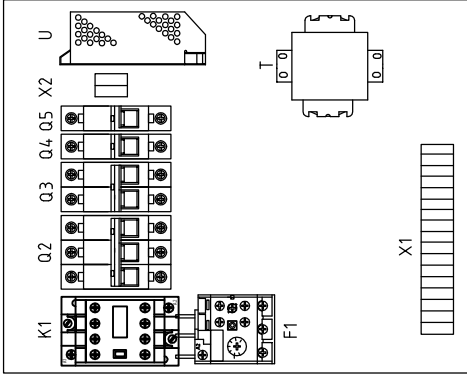
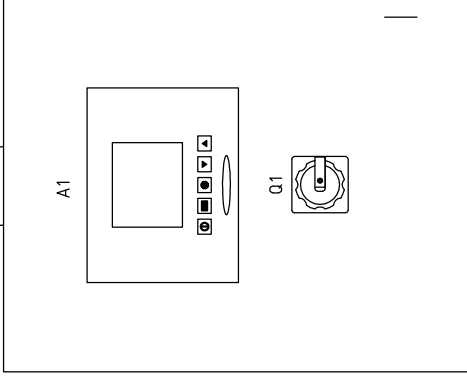
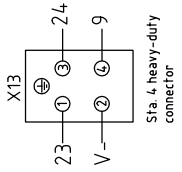
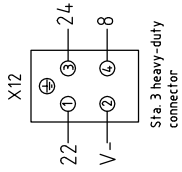
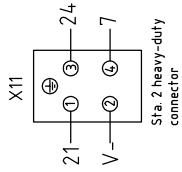
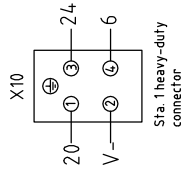
机型版本	Ver.E
Mark	Before modification
After modification	Modified by
Checked by	Date
Proofread by	20191220
Designer	Approved by
Drawer	Version
	H

Title		SAL-5HP-UG124	
Drawing NO.		SAL-5HP-UG124-CE-400V-H-2	
Version		H	
Approved by			
Date		20191220	
Checked by			
Proofread by			
Designer			
Drawer			
Diaphragm valve 1		Diaphragm valve 2	
Diaphragm valve 3		Diaphragm valve 4	
vacuum breaking valve		host unit spraying valve	
Sta. 1 shut-off valve		Sta. 2 shut-off valve	
Sta. 3 shut-off valve		Sta. 4 shut-off valve	
Motor contractor		Alarm light (red + buzzer)	

Scale	Standard	CE
Page	2	Totally 4
Pages	3	4
Voltage	3	400V
Frequency	50	Hz



信易电热机械股份有限公司
 Shini Plastics Technologies, Inc.



机型版本 Ver.E

Mark	Before modification	After modification	Modified by	Modify date	Checked by	Date	Approved by	Version	H	Drawer	Designer	Proofread by
						20191220						

Title SAL-5HP-UG124
Elec. Parts Layout & Wiring Diagram

Drawing NO. SAL-5HP-UG124-CE-400V-H-3

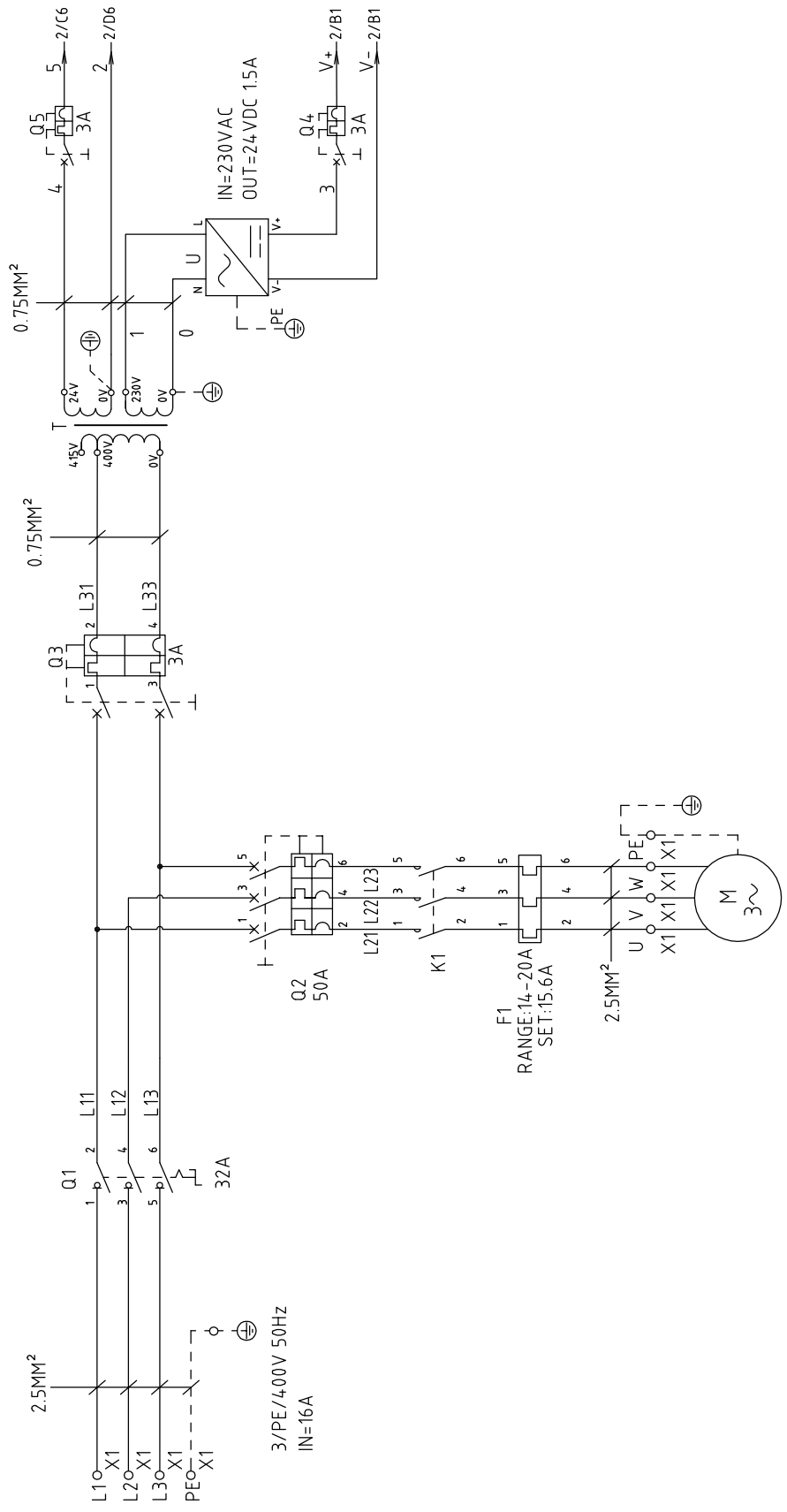
Standard	Scale	Page
CE		3
Voltage	Frequency	Totally
3φ400V	50HZ	4



1	2		3	4	5	6	7	8
N0	Symbol	Name	Manufacturer	Type	Specification	Number	Material number	Remark
1	Q1	Main switch	EATON	T0-2-1/EA/SVB	20A	1	YE10021160000	
2	Q2	Circuit breaker	TECO	BM-63C/3025S	25A	1	YE40302503000	
3	Q3	Circuit breaker	TECO	BM-63C/2003S	3A 2P	1	YE40200203000	A
4	Q4 Q5	Circuit breaker	TECO	BM-63C/1003S	3A 1P	2	YE40100203000	
5	K1	Contactors	SIEMENS	3RT6017-1AB01	24VAC	1	YE00601702500	
6	F1	Thermal overload relay	SIEMENS	3RU6116-1JB0	7-10A	1	YE01167100000	
7	A1	Controller	YUYUN	CS4	24VAC/DC	1	YE80042401200	
8	S1	RS-485 comm. interface board	YUYUN	---	Dsub-9pin connector	1	YE90048501200	
9		Shell RS-485(SAL-700G-A-19)ver. 0	---	---	---	1	YR40048500000	
10		9-pin serial port connector (male) with shell and screw	---	---	---	1	YE62090000000	
11	H1	Alarm light	HONGYUN	Red,yel,gre.+ buzzer	24VAC/DC	1	BL90000011520	B
12	T	Transformer	JIUXIN	400V/415V OUT=24V /230V	50VA 500MA	1	YE70040007100	
13	U	DC power	---	S-35-24	24VDC 1.5A	1	YE71352400000	
14	X1 X2	Wiring terminal	HONEYWELL	SK2.5	2.5mm ²	20	YE60002503200	
15		Wiring terminal	HONEYWELL	GK2.5PE	2.5PE	9	YE60002503400	
16		Terminal fittings E/GK series	HONEYWELL	---	PCS	6	YE60000003900	
17	X10-X13	Heavy duty connectors	HARTING	Han E-4F (female)	4P	4	YE68000401400	
18	M	Blower	SHINI	RB-550	5HP 400V 50HZ	1	---	(1)
19	Y1-Y6	Solenoid vavle	AIRTAC	---	24VDC	6	---	(1)
20	Y11-Y14	Solenoid vavle	AIRTAC	---	24VDC	4	---	(1)
21	S2-S5	Photosensor switch	FOTEK	MT-4 MNO-30VDC	10...30VDC	4	---	(1) Photosensor hopper receiver
22		Reed switch	SONON	BN12-30BLA	24VDC	4	---	(1) Vacuum hopper receiver
		Reed switch						
机型版本 Ver. E								
Notes: (1)Non-control box installation.								
			Drawer	Version	Title	Drawing NO.		Page
			Designer	H	SAL-5HP-UG124	SAL-5HP-UG124-CE-400V-H-4		4
			Proofread by	Approved by	Elec. Parts List 1		Standard	Totally
			Checked by	Date			CE	4
			Modified by	20191220			Voltage	Pages
			Modify date				Frequency	
Mark	Before modification	After modification					3φ400V	50HZ
1	2	3	4	5	6	7	8	



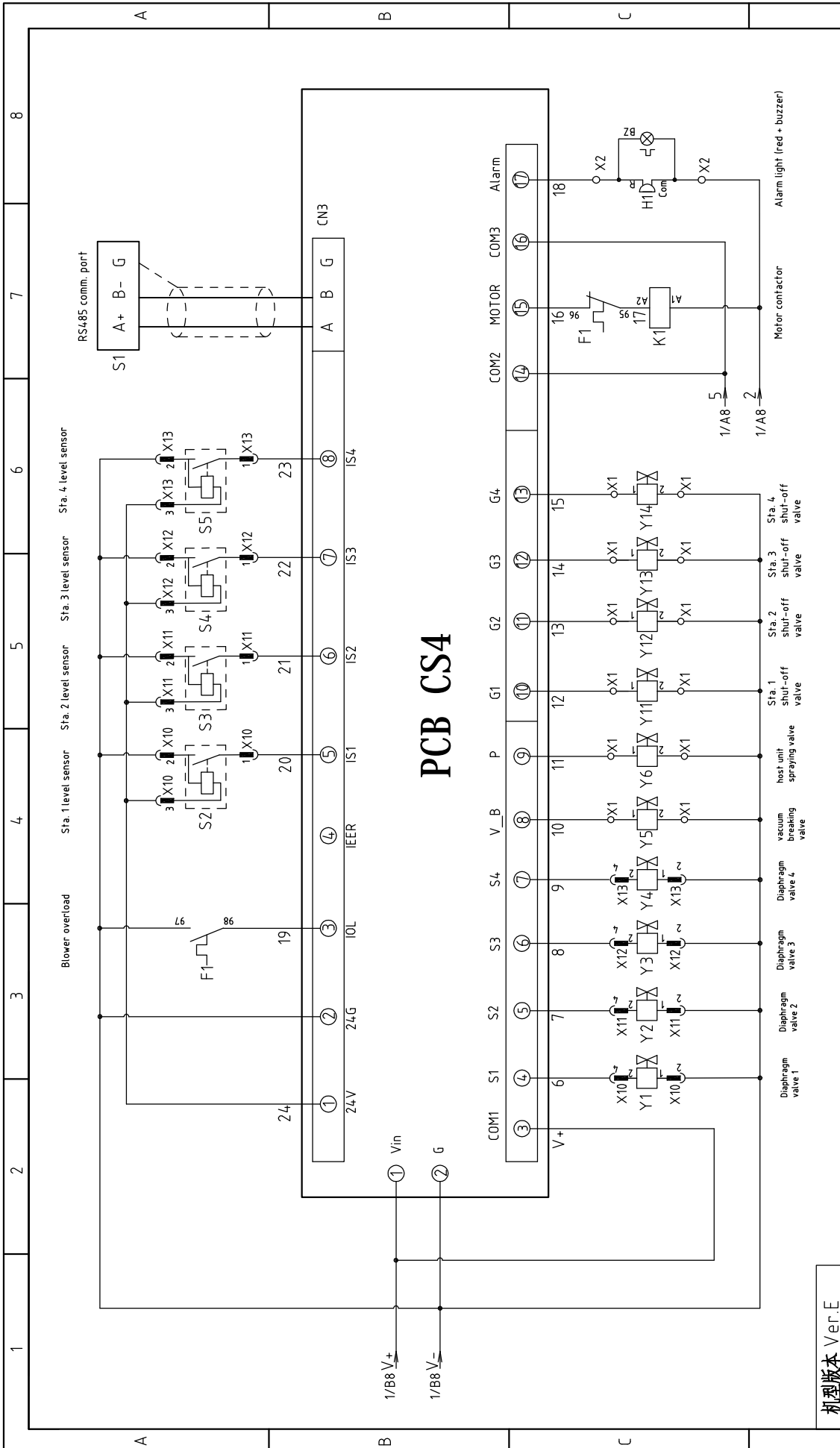
信易電熱機械股份有限公司
Shini Plastics Technologies, Inc.



机型版本 Ver.E

1	2	3	4	5	6	7	8
Title				Drawing NO.			
SAL-10HP-UG124				SAL-10HP-UG124-CE-400V-H-1			
Main Circuit Diagram				Standard CE			
Version				Scale			
H				Page 1			
Approved by				Totally 4 Pages			
Date				Voltage			
20191220				3φ400V			
Checked by				Frequency			
Modified by				50HZ			
Modify date				Voltage			
After modification				Frequency			
Before modification				3φ400V			
Mark				50HZ			
1				2			
3				4			
5				6			
7				8			

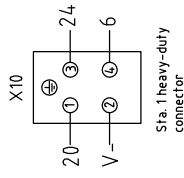




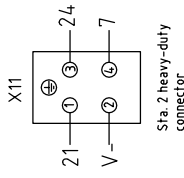
PCB CS4

机型版本 Ver.E

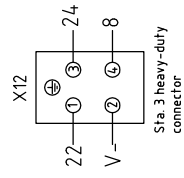
Title		SAL-10HP-UG124		Drawing NO.		SAL-10HP-UG124-CE-4.00V-H-2	
Version		H		Control Circuit Diagram		Scale	
Approved by				SHINI		Standard	
Date		20191220		信易电热机械股份有限公司 Shini Plastics Technologies, Inc.		CE	
Modified by				SHINI		Voltage	
Modify date				SHINI		Frequency	
After modification				SHINI		3φ4.00V	
Before modification				SHINI		50HZ	
Mark				SHINI		Page	
				SHINI		2	
				SHINI		4	
				SHINI		6	
				SHINI		7	
				SHINI		8	
				SHINI		8	



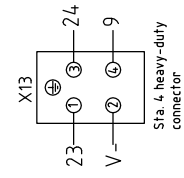
Pin No.	Function	Description
1	Level signal (SENS)	Connect to level sensor 1
2	GND(COM)	
3	24V+	
4	Connect to diaphragm valve 1	24VDC solenoid valve



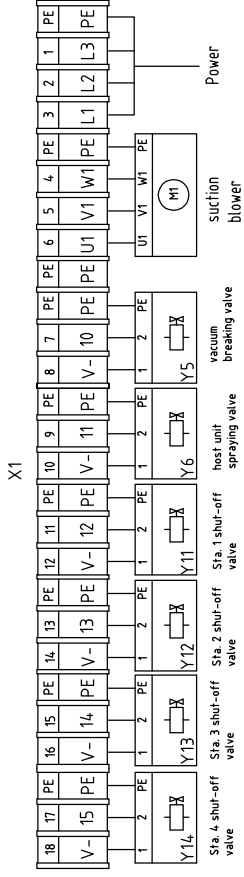
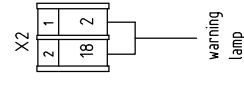
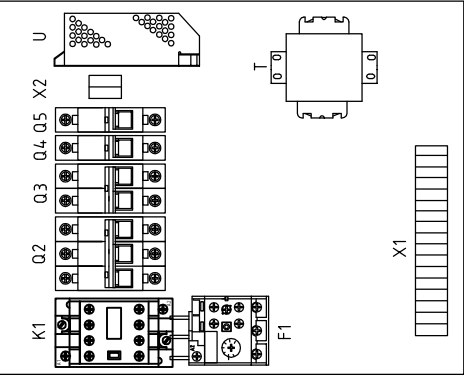
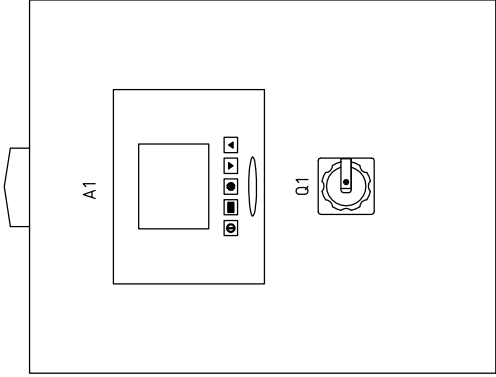
Pin No.	Function	Description
1	Level signal (SENS)	Connect to level sensor 2
2	GND(COM)	
3	24V+	
4	Connect to diaphragm valve 2	24VDC solenoid valve



Pin No.	Function	Description
1	Level signal (SENS)	Connect to level sensor 3
2	GND(COM)	
3	24V+	
4	Connect to diaphragm valve 3	24VDC solenoid valve



Pin No.	Function	Description
1	Level signal (SENS)	Connect to level sensor 4
2	GND(COM)	
3	24V+	
4	Connect to diaphragm valve 4	24VDC solenoid valve



Mark	Before modification	After modification	Modified by	Modify date	Checked by	20191220
Version	H	Approved by		Date		
Drawer		Designer				
Title SAL-10HP-UG124						
Elec. Parts Layout & Wiring Diagram						
Drawing NO. SAL-10HP-UG124-CE-400V-H-3						
Scale Standard CE						
Page 3						
Totally 4 Pages						
Voltage 3Φ400V						
Frequency 50HZ						



1	2		3	4	5	6	7	8	
N0	Symbol	Name	Manufacturer	Type	Specification	Number	Material number	Remark	
1	Q1	Main switch	EATON	P1-32/EA/SVB	32A	1	YE10323200000		
2	Q2	Circuit-breakers	TECO	BM-63C/3050S	50A	1	YE40305003000		
3	Q3	Circuit-breakers	TECO	BM-63C/2003S	3A 2P	1	YE40200203000		
4	Q4 Q5	Circuit-breakers	TECO	BM-63C/1003S	3A 1P	2	YE40100203000		
5	K1	Contactors	SIEMENS	3RT6026-1AC20	24VAC	1	YE00602602600		
6	F1	Thermal overload relay	SIEMENS	3RU6126-4BB0	14-20A	1	YE01260140000		
7	A1	Controller	YUYUN	CS4	24VAC/DC	1	YE80042401200		
8	S1	RS-485 comm. interface board	YUYUN	---	Dsub-9pin connector	1	YE90048501200		
9		Shell RS-485(SAL-700G-A-19)ver. 0	---	---	---	1	YR40048500000		
10		9-pin serial port connector (male) with shell and screw	---	---	---	1	YE62090000000		
11	H1	Alarm light	HONGYUN	Red,yel,gre.+ buzzer	24VAC/DC	1	BL90000011520		
12	T	Transformer	JIUXIN	400V/415V OUT=24V /230V	80VA 500MA	1	YE70040003300		
13	U	DC power	---	S-35-24	24VDC 1.5A	1	YE71352400000		
14	X1 X2	Wiring terminal	HONEYWELL	SK2.5	2.5mm ²	20	YE60002503200		
15		Wiring terminal	HONEYWELL	GK2.5PE	2.5PE	9	YE60002503400		
16		Terminal fittings E/GK series	HONEYWELL	---	PCS	6	YE60000003900		
17	X10-X13	Heavy duty connectors	HARTING	Han E-4,F(female)	4P	4	YE68000401400		
18	M	Blower	SHINI	RB-850	10HP 400V 50HZ	1	---	(1)	
19	Y1-Y6	Solenoid vavle	AIRTAC	---	24VDC	6	---	(1)	
20	Y11-Y14	Solenoid vavle	AIRTAC	---	24VDC	4	---	(1)	
21	S2-S5	Photosensor switch	FOTEK	MT-4 MNO-30VDC	10...30VDC	4	---	(1) Photosensor hopper receiver	
22		Reed switch	SONON	BN12-30BLA	24VDC	4	---	(1) Vacuum hopper receiver	
初型版本 Ver.E									
Notes: (1)Non-control box installation.									
Drawing NO.				SAL-10HP-UG124					Page 4
Title				SAL-10HP-UG124-CE-4.00V-H-4					Page 4
Scale				Standard					CE
Voltage				3φ4.00V					Pages
Frequency				50HZ					Totally 4
SHINI				信易電熱機械股份有限公司 Shini Plastics Technologies, Inc.					Voltage
SHINI				SHINI					Frequency
SHINI				SHINI					50HZ
SHINI				SHINI					8