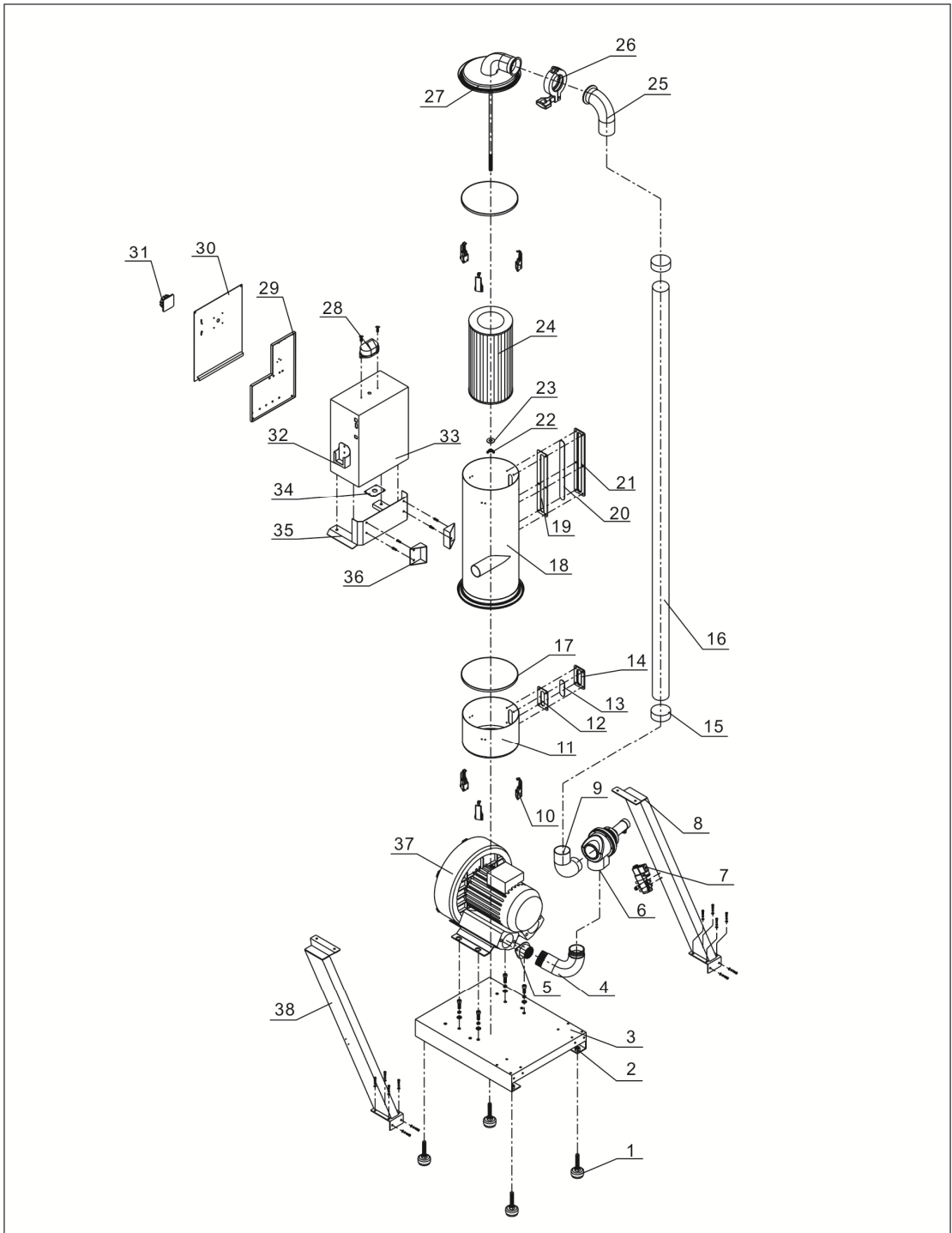


1. Assembly Drawing (SAL-5HP-UG)



Remarks: Please refer to material list 2 for specific explanation of the Arabic numbers in Pparts drawing.

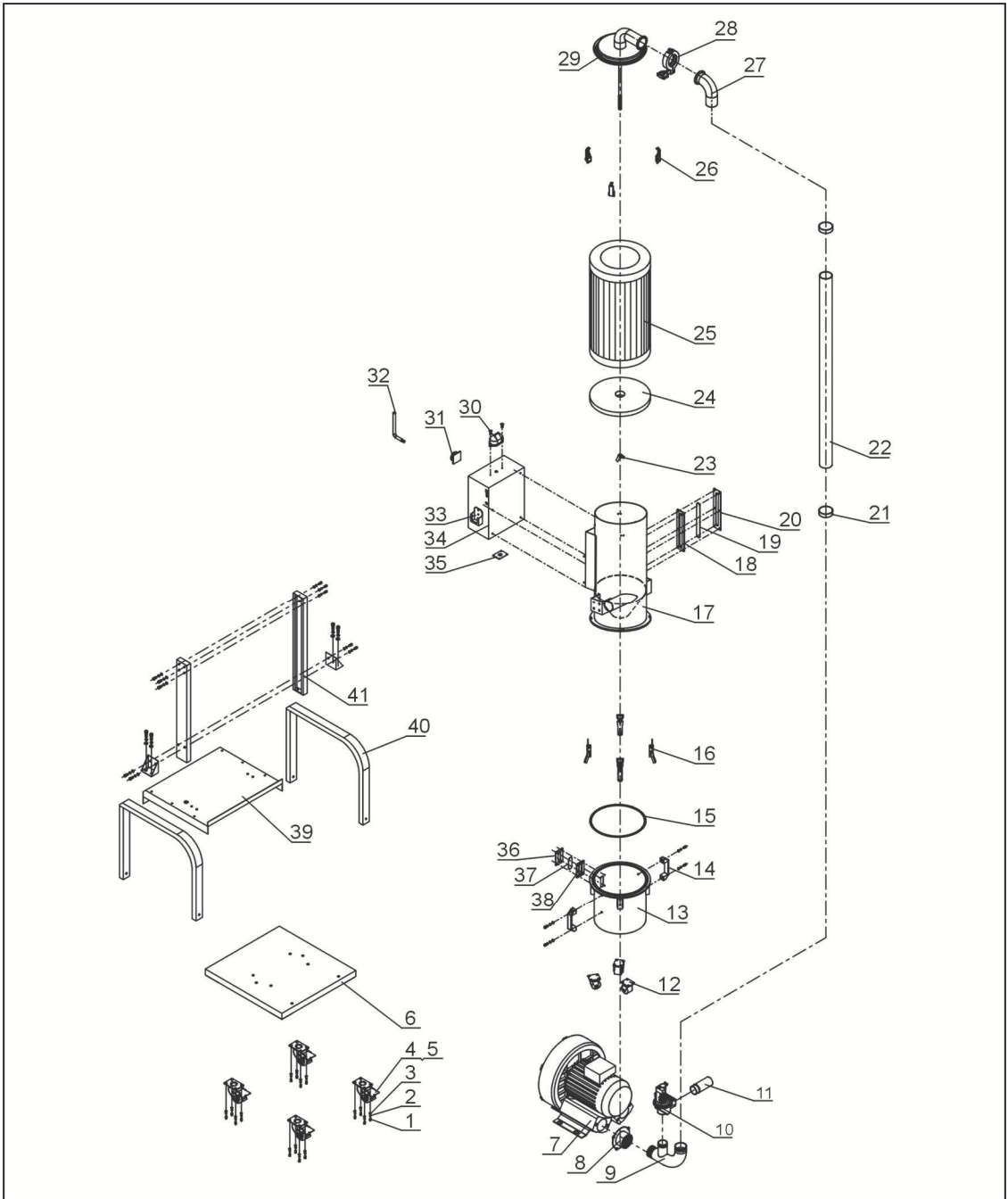
2. Parts List (SAL-5HP-UG)

No.	Name	Part No.	No.	Name	Part No.
1	Anti-vibration pad Φ 50	YW03005000000	20	Six acryl	YR40001200000
2	Nut M12	YW64012100000	21	Six hole material windw sheet iron	YW09000600000
3	Base	BL21003500120	22	Butterfly nut 5/16"	YW69051600000
4	Air inlet pipe	BL26000503220	23	Flat gasket 8	YW66082200100
5	Blower flange	BH13003500210	24	Filter ADC2 external 188x inner 114x High302	YR50181100000
6	Vacuum separator assembly 2"	-	25	Air suction pipe	-
7	Solenoid valve 4V210-06/AC220V	YE32421600000	26	Coupling clip	YW07002006000
8	Left standing column	-	27	Filter barrel lid assembly	BL26000503120
9	Vacuum breaking diaphragm valve pipe connector	BL26000503320	28	Alarm light	YE83305100200
10	Adjustable spring buckle SAL-6U-A-35	YW02003000400	29	Control base board	-
11	Dust collection bin	BL21003507921	30	Control box cover	-
12	Four hole material window fastener	YR40000400000	31	Main power switch	YE10021160000
13	Four acryl	YR40001200100	32	Controller holder	-
14	Four hole material windw sheet iron	YW09000000400	33	Control box	-
15	Stainless steel clamp 3"	YW02000300000	34	Fixing board of wire clamps	
16	Clip 2.5"	YR60253000000	35	Filter barrel fixation bracket	-
17	Fastener for filtering barrel SAL-810G-A-03	YR10080000300	36	Control box fixing plate	-
18	Filter barrel assembly	BL26000500920	37	High pressure blower 5HP	BM30055000050
19	Six hole material window fastener	YR40000600000	38	Right standing pole	-

* means possible broken parts. ** means easy broken part. and spare backup is suggested.

Please confirm the version of manual before placing the purchase order to guarantee that the item number of the spare part is in accordance with the real object.

3. Assembly Drawing (SAL-10HP-UG)



Remarks: Please refer to material list 4 for specific explanation of the Arabic numbers in parts drawing.

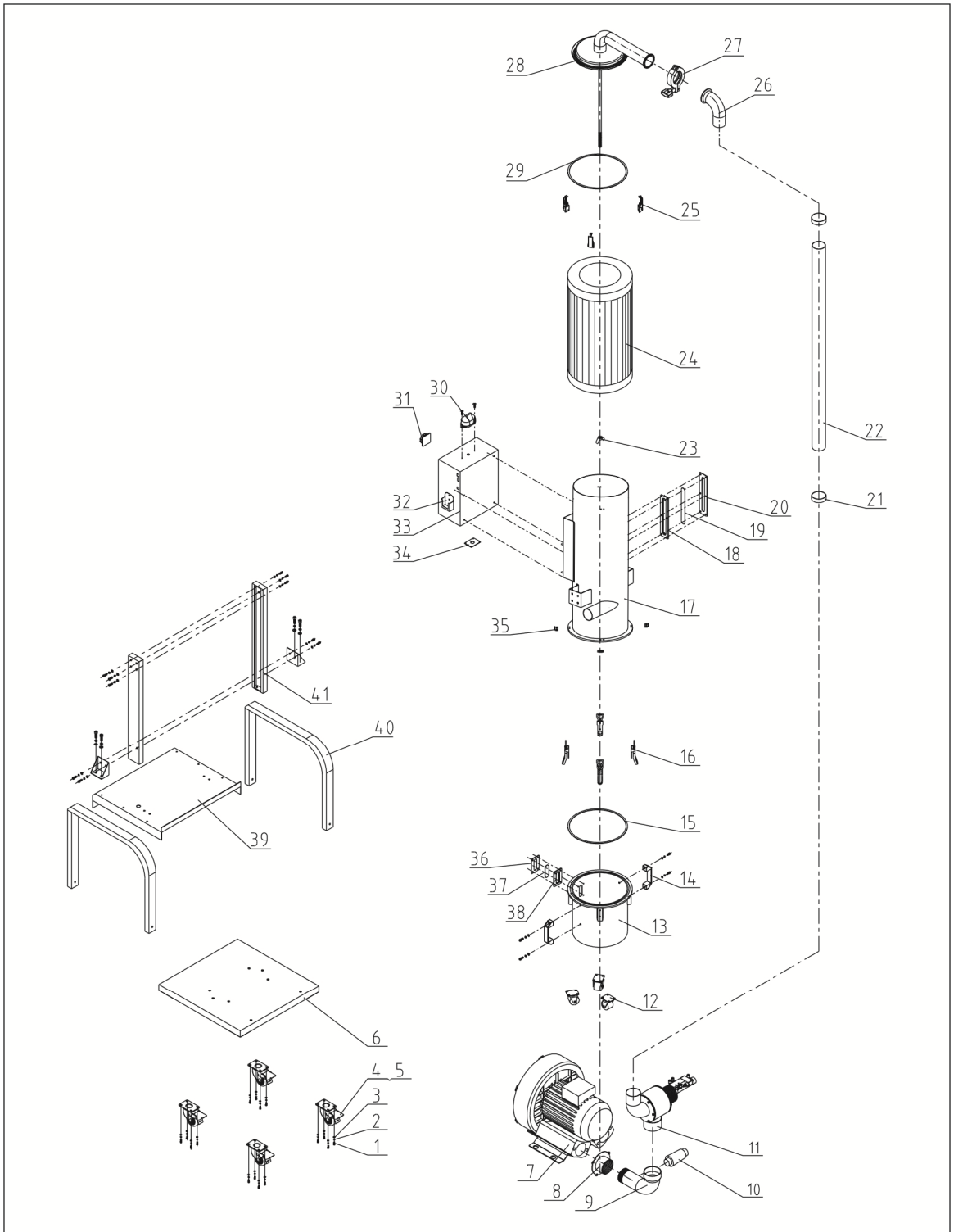
4. Parts List (SAL-10HP-UG)

No.	Name	Part No.	No.	Name	Part No.
1	Outer hexagon bolt M6×16	YW60061600100	21	Stainless steel pipe bundle 3"	YW02000300000
2	Flat washer 6	YW66061300000	22	Wire hose 2.5"	YR60253000000
3	Spring washer 6	YW65006000100	23	Butterfly nut 5/16"	YW69051600000
4	Braking caster 3"	YW03000300000	24	Filter stator	BL26007504720
5	Freestyle caster 3"	YW03000300200	25	Filter ADC22	YR50221400000
6	Base	BL26007502721	26	Snap hook	YW02003000400
7	Single-stage high pressure blower 10HP	BM30081000050	27	Air suction pipe	-
	Double-stage high pressure blower 10HP	YM30637500000	28	Pipe clamp	YW07002500600
8	Blower flange	-	29	Filter cover assembly	-
9	Air inlet pipe	BL26007504920	30	Alarm light	YE83305100200
10	Vacuum diaphragm valve 2"	BY20500000050	31	Main power switch	YE10210300000
11	Air refill filter screen	-	32	Dedicated wrench for anti-theft screw	JT40450000000
12	Caster 2.5"	YW03002500000	33	Handle box	BL26010241820
13	Dust collecting barrel	BL26007502421	34	Control box	-
14	Aluminum handle L120	BW20012000040	35	Line jig fixed plate	-
15	Dust collecting fastener	-	36	Four hole material window sheet iron	YW09000000400
16	Big handle	YW02003000100	37	Four hole material window fastener	YR40000400000
17	Dust collecting barrel assembly	-	38	Four hole acryl	YR40001200100
18	Six holes material window fastener	YR40000600000	39	Intermediate plate	
19	Six holes acryl	YR40001200000	40	Stand	
20	Six holes material window sheet iron	YW09000600000	41	Filter barrel upright	

* means possible broken parts. ** means easy broken part. and spare backup is suggested.

Please confirm the version of manual before placing the purchase order to guarantee that the item number of the spare part is in accordance with the real object.

5. Assembly Drawing (SAL-20HP-UG-D)



Remarks: Please refer to material list 6 for specific explanation of the Arabic numbers in parts drawing.

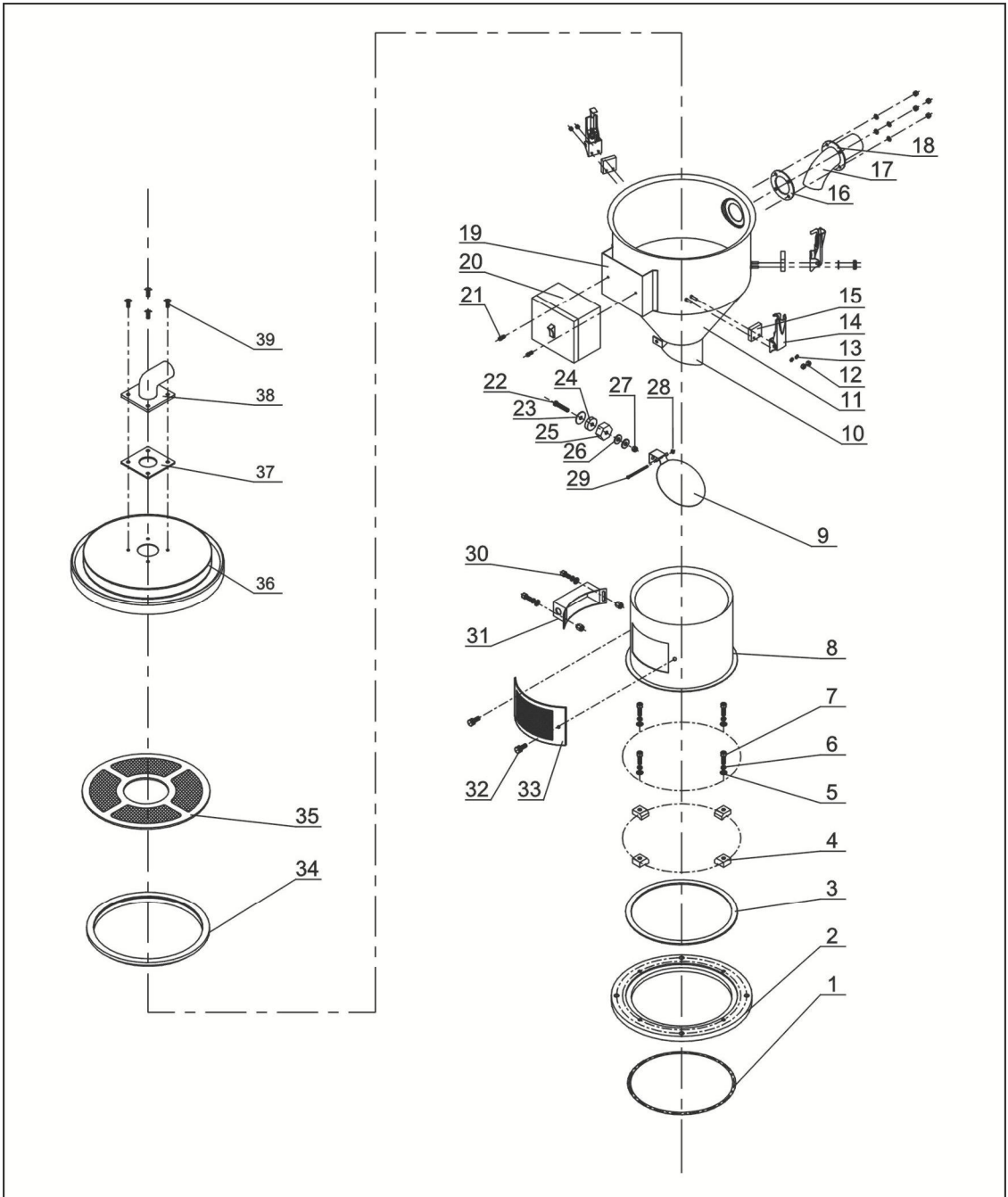
6. Parts List (SAL-20HP-UG-D)

No.	Name	Part No.	No.	Name	Part No.
1	Hexagon screw bolt M6×16	YW60061500100	22	Steel wired plastic pipe 3.5"	YR60303000000
2	Flat gasket 6	YW66061300000	23	Butterfly nut 5/16"	YW69051600000
3	Standard spring washer 6	YW65006000100	24	Filter	YR50226000000
4	Brake universal castor 3"	YW03000300000	25	Snap hook	YW02003000400
5	Free universal castor 3"	YW03000300200	26	Air suction pipe	-
6	Base	-	27	Pipe clamp	YW07000300000
7	High pressure blower (two stage) 20HP	YM30001500300	28	Filter barrel lid assembly	-
8	Blower flange	-	29	Filter barrel fastener	YR10028700000
9	Air inlet pipe	-	30	Alarm light LTE-3051 AC220V	YE83305100200
10	Pressure-release valve RV-02*	YW90000100000	31	Main power switch	YE10210300000
11	Vacuum separator SPDV-76	BY20500000050	32	Handle box	-
12	Universal castor 2.5"	YW03002500000	33	Control box	-
13	Dust collection bin	-	34	Line jig fixed plate	-
14	Square aluminum handle L120	BW20012000040	35	Snap hook pothook	-
15	Fastener for dust collection bin	YR10002500200	36	Sight-glass iron sheet four holes	YW09000000400
16	Handle	YW00121000400	37	Sight-glass fastener four holes	YR40000400000
17	Filter barrel assembly	-	38	Acryl four holes	YR40001200100
18	Six holes sight glass	YR40000600000	39	Middle plate	
19	Acryl six holes	YR40001200000	40	Bracket	
20	Six holes sight glass	YW09000600000	41	Pillar of filter barrel	
21	Stainless steel clamp 3.5"	YW02003500000			

* means possible broken parts. ** means easy broken part. and spare backup is suggested.

Please confirm the version of manual before placing the purchase order to guarantee that the item number of the spare part is in accordance with the real object.

7. Assembly Drawing (SHR-6U/12U)



Remarks: Please refer to material list 8 for specific explanation of the Arabic numbers in parts drawing.

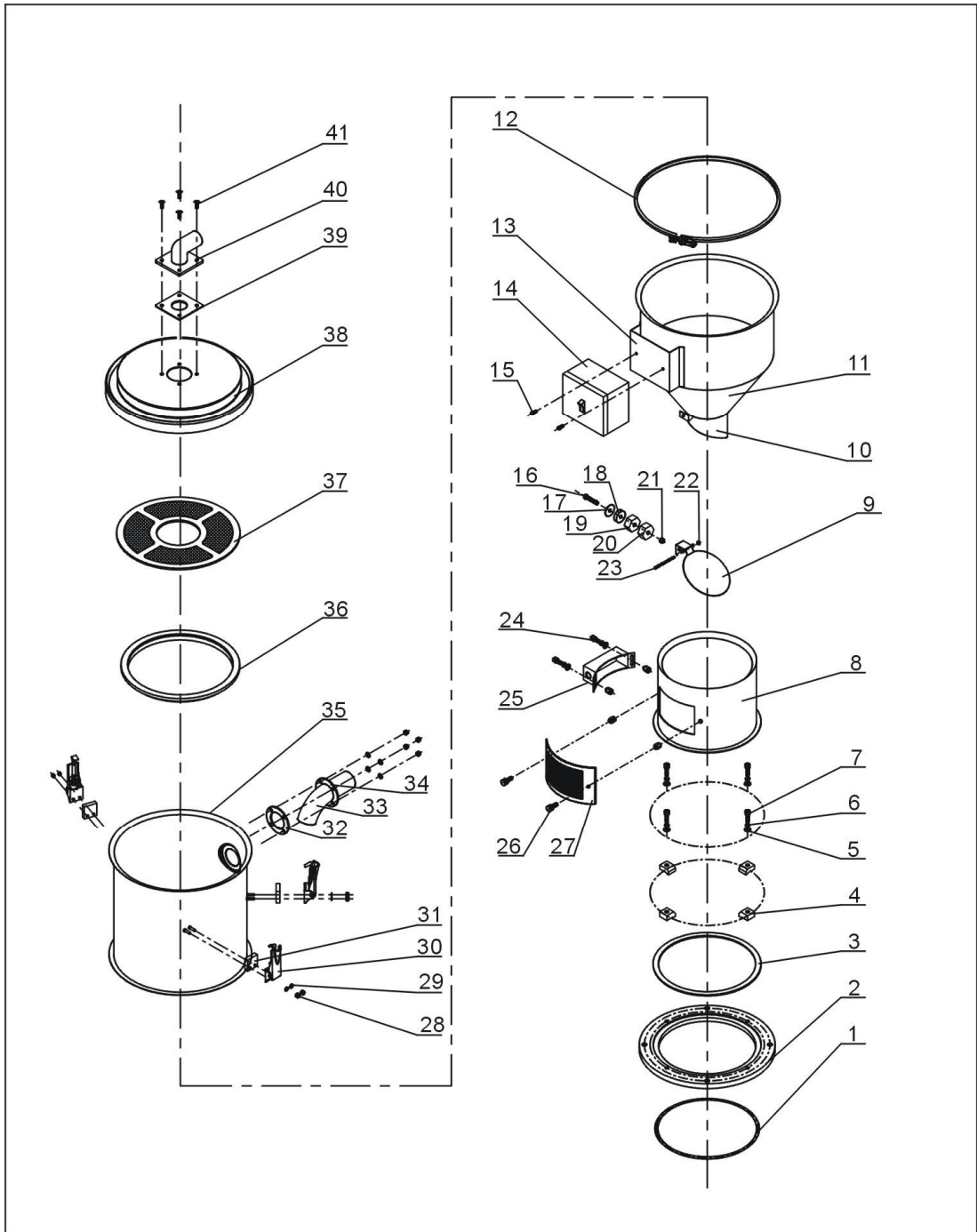
8. Parts List (SHR-6U/12U)

No.	Name	Part No.	No.	Name	Part No.
1	O-ring inner diameter $\Phi 200 \times 5.5$	YR20205500000	21	Cross recess pan head screw M4×6	YW63040600000
2	Base	BW21275100010	22	Cross recess pan head screw M6×20	YW63062000000
3	Base fastener	-	23	Magnet cover	BL21000600120
4	Pressing piece	-	24	Permanent magnet $\Phi 25 \times \Phi 7 \times 7$	YW90257700000
5	Flat washer 6	YW66061300000	25	Magnet set	BH12000600010
6	Spring washer 6	YW65006000000	26	Flat washer 8×22	YW66082200100
7	Socket head cap screw M6×20	YW61062000200	27	Locknut M6	YW64000600200
8	Hopper fixed seat	BL27000601320	28	Locknut M3	YW64000300000
9	Discharging plate	BL20000601820	29	Cross recess pan head screw M3×40	YW63034000000
10	Discharging port	BL21001210220	30	Socket head cap screw M6×10	YW63061000000
11	Material storage hopper	-	31	Sensor shell	YR40000601100
12	Locknut M4×0.7	YW64040700100	32	Star knob	YR40061500000
13	Flat washer 4	YW66040800000	33	Ventilated window	YR40000601000
14	Snap hook	YW02003000400	34	Hopper fastener	YR10000300100
15	Snap hook pad	YR40000600300	35	Filter screen	BL21000600620
16	material pipe fastener	YR10150300000	36	Hopper cover	YR40010000200
17	Material pipe	-	37	Air suction pipe fastener	YR10000000200
18	Material pipe stator	BL21000602520	38	Air suction pipe	YR20001500000
19	Electrical cabinet base	-	39	Cross recess pan head screw M5×15	YW62051500000
20	Electrical cabinet	YR40010000200			

* means possible broken parts. ** means easy broken part. and spare backup is suggested.

Please confirm the version of manual before placing the purchase order to guarantee that the item number of the spare part is in accordance with the real object.

9. Assembly Drawing (SHR-24U/36U)



Remarks: Please refer to material list 10 for specific explanation of the Arabic numbers in parts drawing.

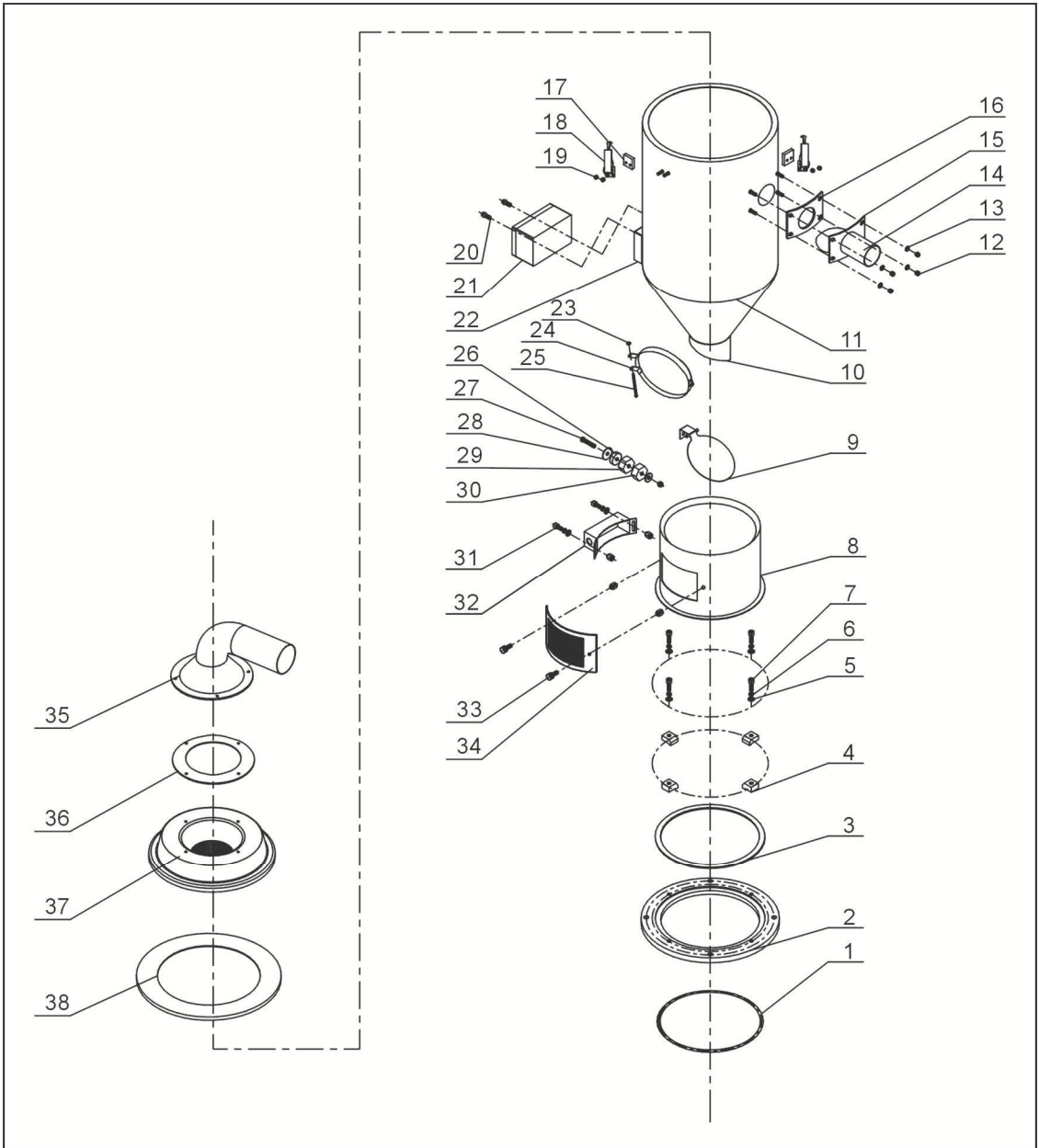
10. Parts List (SHR-24U/36U)

No.	Name	Part No.	No.	Name	Part No.
1	O-ring inner diameterΦ200×5.5	YR20205500000	22	Locknut M3	YW64000300000
2	Base	-	23	Cross recess pan head screw M3×40	YW63034000000
3	Base fastener	-	24	Socket head cap screw M6×10	YW63061000000
4	Pressing piece	-	25	Sensor shell	-
5	Flat washer 6	YW66061300000	26	Star knob	-
6	Spring washer 6	YW65006000000	27	ventilated window	-
7	Socket head cap screw M6×20	YW61062000200	28	Locknut M4×0.7	YW64040700100
8	Hopper fixed seat	-	29	Flat washer 4	YW66040800000
9	Discharging plate	-	30	Snap hook	YW02003000400
10	Discharging port	-	31	Snap hook pad	YR40000600300
11	Material storage hopper	-	32	material pipe fastener	-
12	Pipe bundle	-	33	Material pipe	-
13	Electrical cabinet base	-	34	Material pipe stator	-
14	Electrical cabinet	-	35	Enlarged hopper	-
15	Cross recess pan head screw M4×6	YW63040600000	36	Hopper fastener	-
16	Cross recess pan head screw M6×20	YW63062000000	37	Filter screen	-
17	Magnet cover	-	38	Hopper cover	-
18	Permanent magnet Φ25×Φ7×7	YW90257700000	39	Air pipe fastener	YR10002500000
19	Magnet set	-	40	Air pipe	-
20	With heavy block SHR-24U-A-10	BH10241003110	41	Cross recess pan head screw M5×15	YW62051500000
21	Locknut M6	YW64000600200			

* means possible broken parts. ** means easy broken part. and spare backup is suggested.

Please confirm the version of manual before placing the purchase order to guarantee that the item number of the spare part is in accordance with the real object.

11. Assembly Drawing (SHR-48U/96U)



Remarks: Please refer to material list 12 for specific explanation of the Arabic numbers in parts drawing.

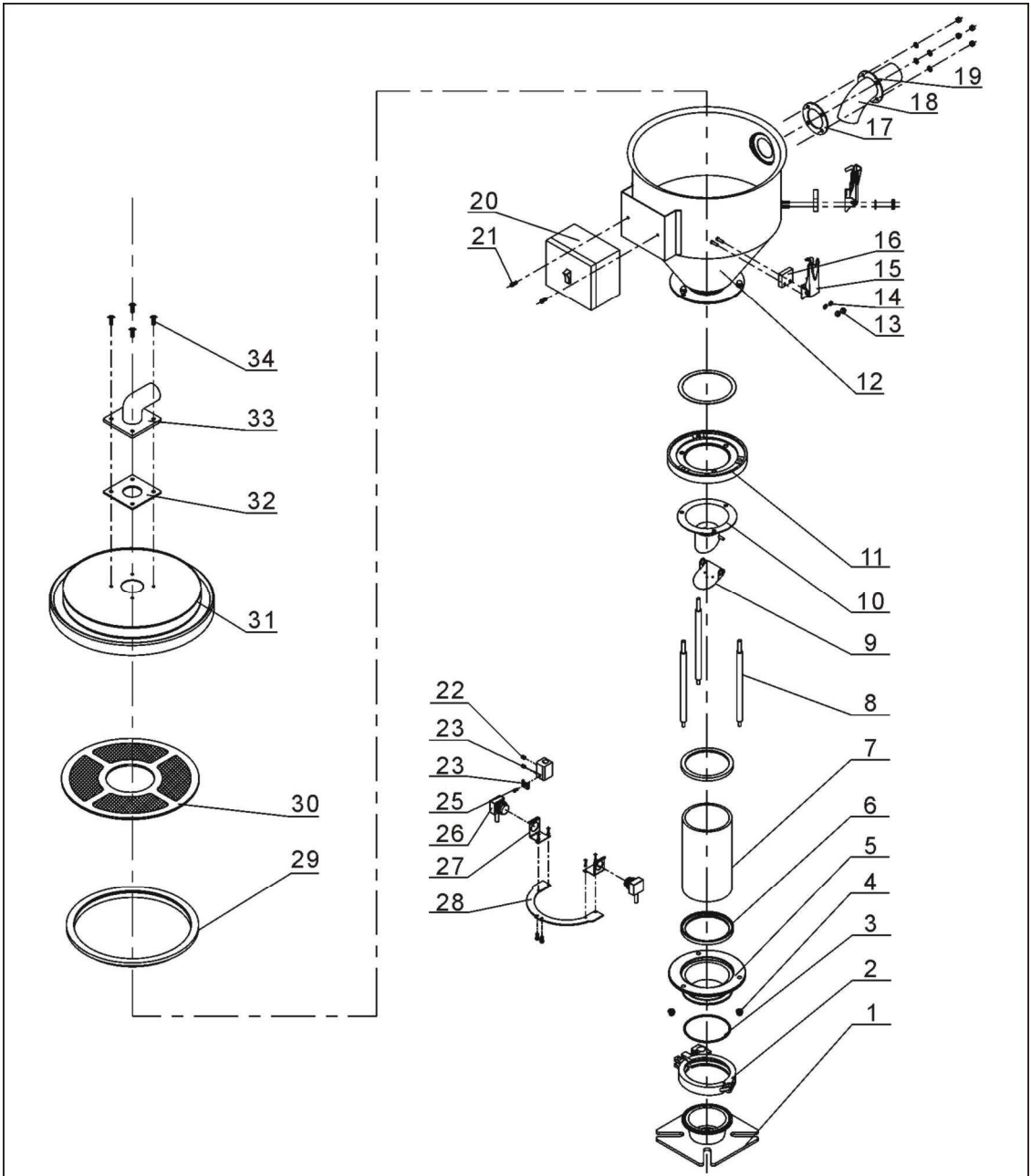
12. Parts List (SHR-48U/96U)

No.	Name	Part No.	No.	Name	Part No.
1	O-ring inner diameter $\Phi 250 \times 5.3$	YR20255300000	20	Cross recess pan head screw M4×6	YW63040600000
2	Base	-	21	Electrical cabinet	YR40010000000
3	Base fastener	-	22	Electrical cabinet base	-
4	Pressing piece	-	23	Locknut M6	YW64000600200
5	Flat washer 6	YW66061300000	24	Fixed seat of discharging plate	-
6	Spring washer 6	YW65006000000	25	Cross recess pan head screw M6×40	-
7	Socket head cap screw M6×20	YW61062000200	26	Permanent magnet $\Phi 25 \times \Phi 7 \times 7$	YW90257700000
8	Hopper fixed seat	-	27	Cross recess pan head screw M6×20	YW63062000000
9	Discharging plate	-	28	Magnet cover	-
10	Discharging port	-	29	Magnet set	-
11	Material storage hopper	-	30	Balancing weight	-
12	Locknut M5	YW64000500000	31	Socket head cap screw M6×20	YW63061000000
13	Flat washer 5	YW660051000100	32	Sensor shell	-
14	Material pipe	-	33	Star knob M6×15	-
15	Material pipe stator	-	34	ventilated window	-
16	material pipe fastener	-	35	Air pipe	-
17	Snap hook pad	YR40000600300	36	Air pipe fastener	-
18	Snap hook	YW02003000400	37	Hopper lid	-
19	Locknut M4×0.7	YW64040700100	38	Hopper cover fastener	YR10005000100

* means possible broken parts. ** means easy broken part. and spare backup is suggested.

Please confirm the version of manual before placing the purchase order to guarantee that the item number of the spare part is in accordance with the real object.

13. Assembly Drawing (SHR-6U-E)



Remarks: Please refer to material list 14 for specific explanation of the Arabic numbers in parts drawing.

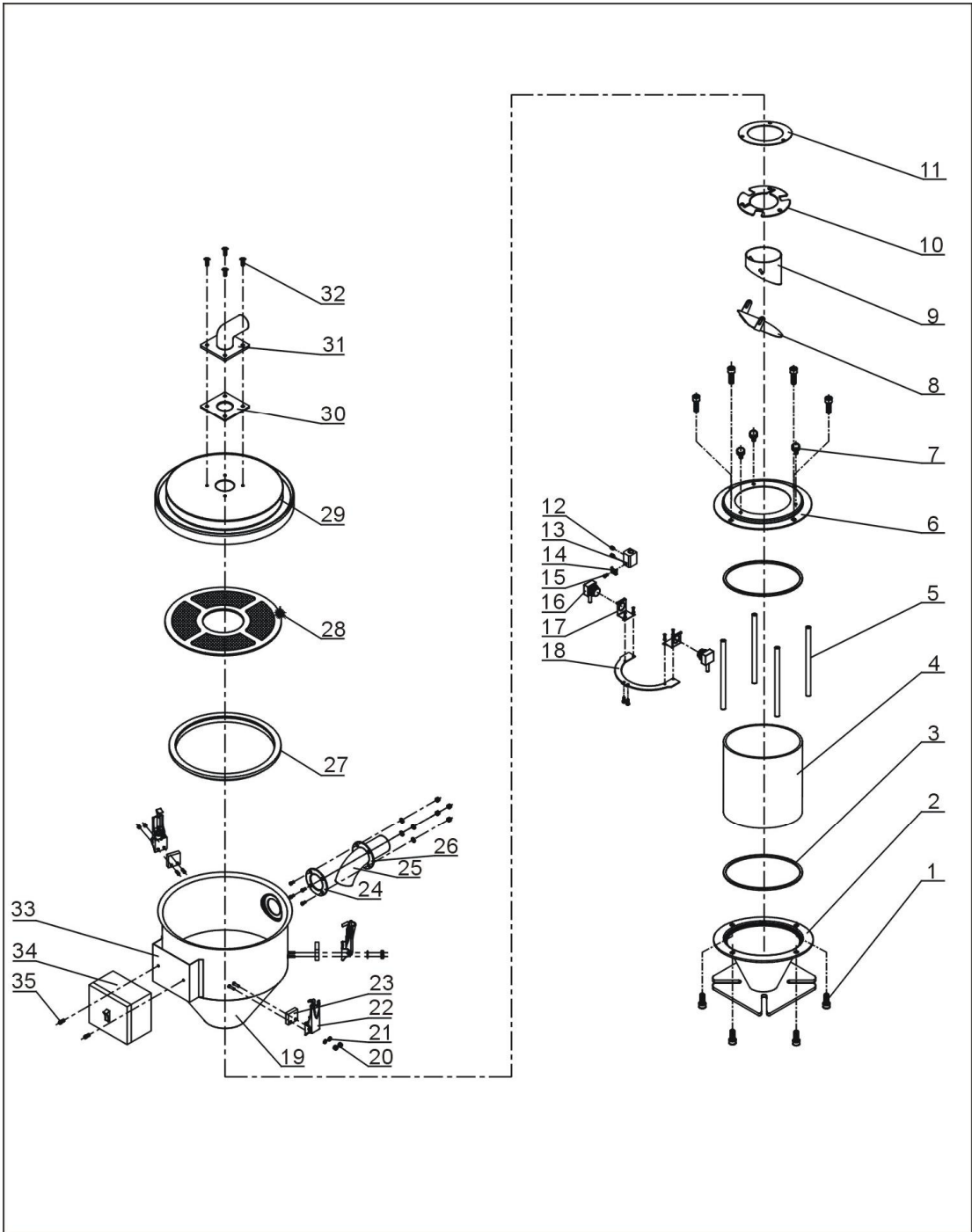
14. Parts List (SHR-6U-E)

No.	Name	Part No.	No.	Name	Part No.
1	Installation flange	BL21060200820	18	Material pipe	-
2	3" stainless steel pipe clamp	YW07000300000	19	Material pipe stator	-
3	O type seal ring	YR20802600000	20	Terminal mounting box	YR40010000200
4	Cap nut M6	YW64006000100	21	Cross recess pan head screw M4×6	YW63040600000
5	Lower flange of glass tube	BW32610900010	22	Set screw M4×5	YW68004500000
6	Glass tube fastener	YR10060200000	23	Fixed plate of photosensor	BL90001000120
7	Glass tubeΦ90×Φ80×117	YW70317000600	24	Pressing piece of photosensor wire	YW31616200000
8	Flange connecting rod	BH10000600640	25	Cross recess pan head screw M4×10	YW63041000000
9	Non-return valve	-	26	Photosensor	YE15143900000
10	Discharging port	-	27	Photosensor installation block	-
11	Upper flange of glass tube	BW32610800010	28	Photosensor stator	BL21061200020
12	Material storage hopper	-	29	Hopper fastener	YR10000300100
13	Locknut M4×0.7	YW64040700100	30	Filter screen	BL21000600620
14	Flat washer 4	YW66040800000	31	Hopper cover	BL21000602820
15	Snap hook	YW02003000400	32	Air pipe fastener	YR10000000200
16	Bearer	YR40000600300	33	Air pipe	YR20001500000
17	Material pipe fastener	YR10150300000	34	Cross recess pan head screw M5 ×15	YW62051500000

* means possible broken parts. ** means easy broken part. and spare backup is suggested.

Please confirm the version of manual before placing the purchase order to guarantee that the item number of the spare part is in accordance with the real object.

15. Assembly Drawing (SHR-12U-E)



Remarks: Please refer to material list 16 for specific explanation of the Arabic numbers in parts drawing.

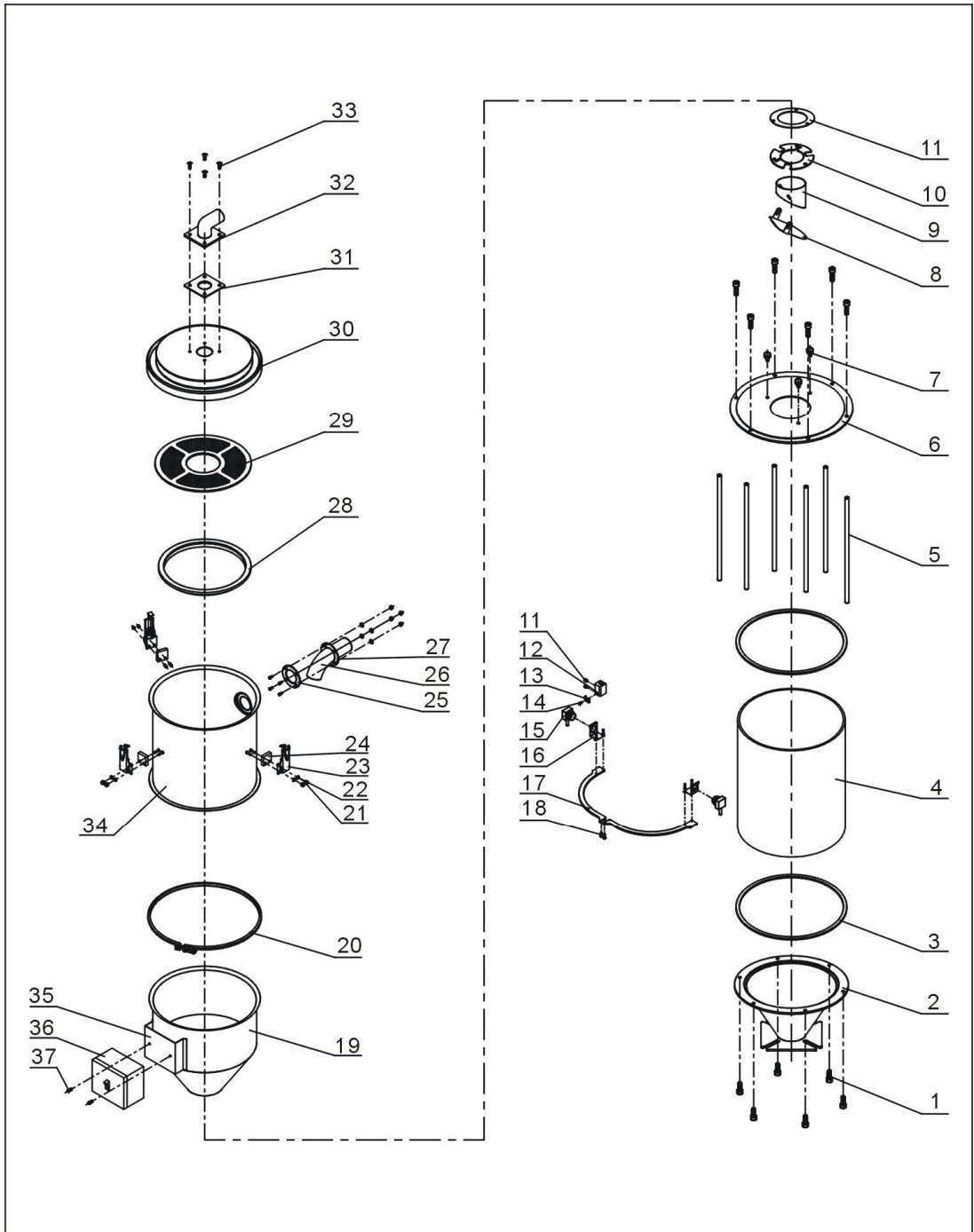
16. Parts List (SHR-12U-E)

No.	Name	Part No.	No.	Name	Part No.
1	Inner hexagon cylindrical screw GB/T 70.1 M6x16-longzine	YW61061601200	19	Material storage hopper	-
2	Lower flange of glass tube	YW32001200000	20	Non metal insert of hexagon locknut GB/T889.1 M4	YW64040700100
3	Glass tube fastener	YR10001200100	21	Flat washer A GB/T97.1 4-longzine	YW66040800000
4	Glass tube $\Phi 170 \times \Phi 160 \times 170$	YW70171700000	22	Snap adjustable	YW02003000400
5	Flange connecting rod	BH10101600210	23	Snap hook block SAL-6U	YR40000600800
6	Upper flange of glass tube	YR32001200100	24	Fixed piece of material inlet pipe	BL20036000320
7	Mnual tighten up screw M6x15	YW69621600000	25	Material inlet pipe	BL32000600020
8	Non-return valve	BL21001200520	26	Material inlet pipe fastener	YR10000600300
9	Discharging port	-	27	Discharge port seal	YR10000600200
10	Vent flange		28	Filter screen	BL21001200320
11	Hopper flange	-	29	Hopper cover	BL21001200220
12	Inner hexagon socket set screw with flat point GB/T 77M4x5 -longzine	YW68004500000	30	Air suction pipe fastener	YR10000000200
13	Photosensor fixed block	BL90001000120	31	Air suction pipe	BW20001500010
14	Photosensor cable pressure block	YW31616200000	32	Cross recessed raised countersunk head screw JIS1111 M5x16 -longzine	YW62051500000
15	Cross socket head cap screw M4x12 GB/T818 -longzine	YW63041200100	33	Control box base	-
16	Photosensor FOTEK T18-3MN-PE	YE15143900000	34	Control box	YR40010000200
17	Photosensor installation block	-	35	Cross socket head cap screw M4 x 6GB/T818 -longzine	YW63040600000
18	Photosensor fixed block	BL21001200120			

* means possible broken parts. ** means easy broken part. and spare backup is suggested.

Please confirm the version of manual before placing the purchase order to guarantee that the item number of the spare part is in accordance with the real object.

17. Assembly Drawing (SHR-24U-E)



Remarks: Please refer to material list 18 for specific explanation of the Arabic numbers in parts drawing.

18. Parts List (SHR-24U-E)

No.	Name	Part No.	No.	Name	Part No.
1	Inner hexagon cylindrical screw GB/T 70.1M6x16-longzine	YW61061601200	20	Pipe clamp	BH11120400010
2	Lower flange of glass tube	-	21	Non metal insert of hexagon locknut GB/T889.1 M4	YW64040700100
3	Glass tube fastener	YR10001200100	22	Flat washer A GB/T97.1 4-longzine	YW66040800000
4	Glass tubeΦ280×Φ270×340	YW70282700000	23	Snap adjustable	YW02003000400
5	Flange connecting rod	BH10103300040	24	Snap hook block SAL-6U	YR40000600800
6	Upper flange of glass tube	-	25	Fixed piece of material inlet pipe	BL27002401720
7	Mnual tighten up screw M6×15	YW69621600000	26	Material inlet pipe	-
8	Non-return valve	BL21001200520	27	Material inlet pipe fastener	YR10243600000
9	Discharging port	-	28	Discharge port seal	YR10000600200
10	Vent flange	-	29	Filter screen	BL21001200320
11	Hopper flange	-	30	Hopper cover	BL21002400020
12	Inner hexagon socket set screw with flat point GB/T 77M4x5-longzine	YW68004500000	31	Air suction pipe fastener	YR10002500000
13	Photosensor fixed base	BL90001000120	32	Air suction pipe	BL27002400620
14	Photosensor cable pressure block	YW31616200000	33	Cross recessed raised countersunk head screw JIS1111 M5x16-longzine	YW62051500000
15	Cross socket head cap screw M4x12 GB/T818-longzine	YW63041200100	34	Large size hopper	BL21002400420
16	Photosensor FOTEK T18-3MN-PE	YE15143900000	35	Control box base	-
17	Photosensor installation block	-	36	Anti-proof junction box WDJH-100	YR40010000200
18	Photosensor fixed block	-	37	Cross socket head cap screw GB/T-818 M4X6-longzine	YW63040600000
19	Material storage hopper	-			

* means possible broken parts. ** means easy broken part. and spare backup is suggested.

Please confirm the version of manual before placing the purchase order to guarantee that the item number of the spare part is in accordance with the real object.