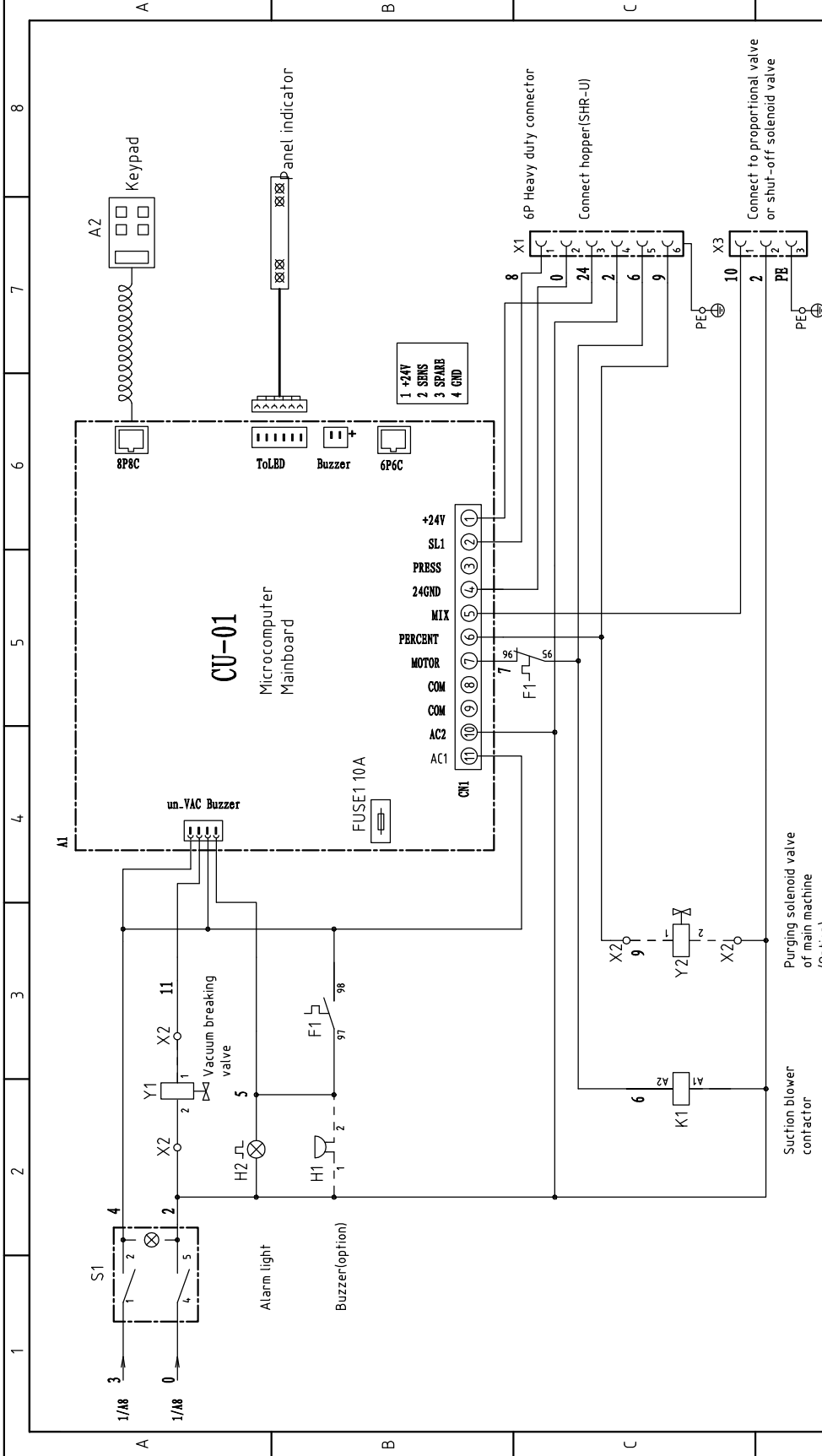


版本 Ver.B

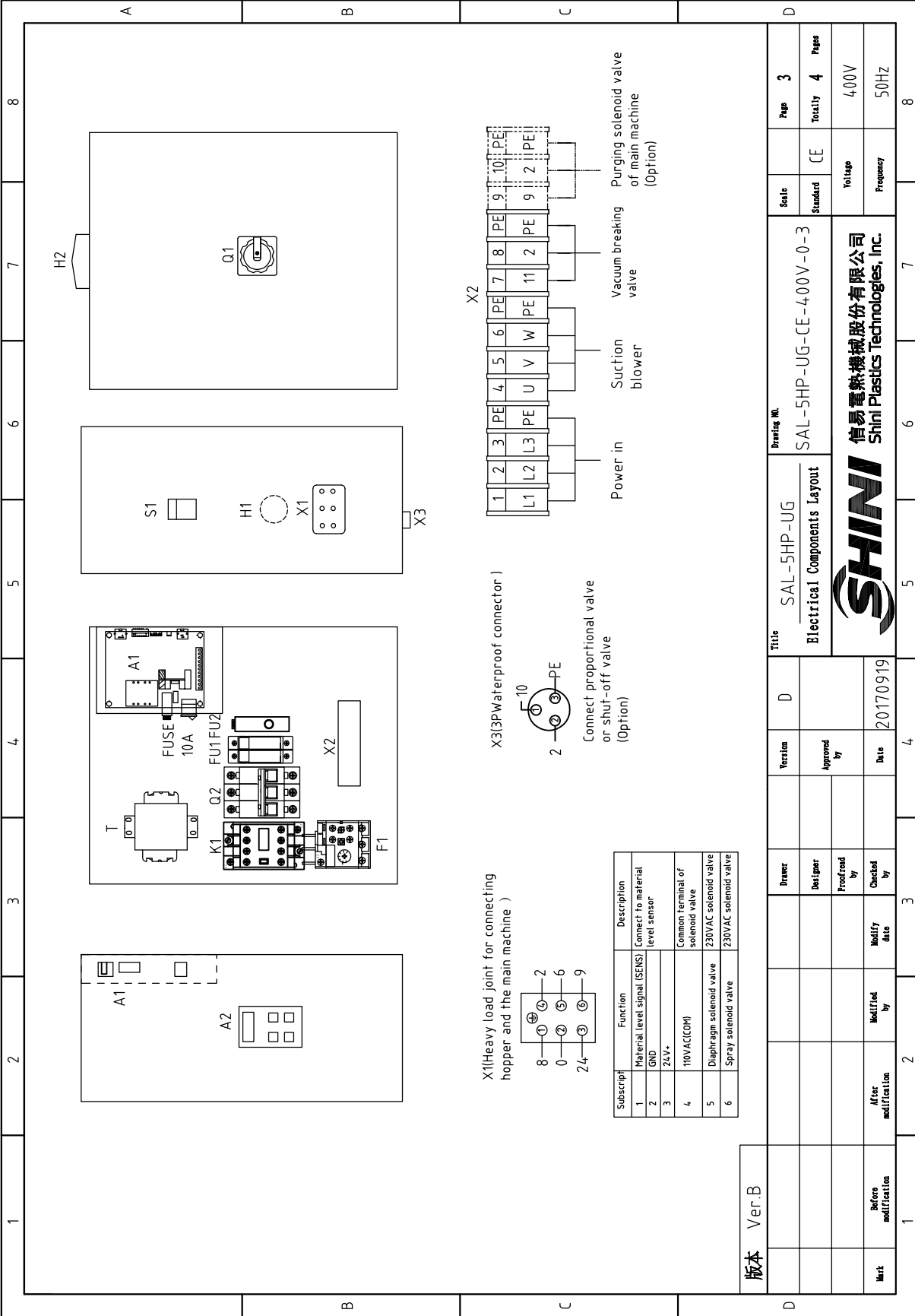
Version		Title		Drawing No.		Scale	
	D	SAL-5HP-UG Main Circuit Diagram		SAL-5HP-UG-CE-4.00V-0-1		Page 1	
	Approved by			Standard		CE	
	Date	20170919		Voltage		400V	
	Modify date			Frequency		50Hz	
	Before modification			Totally		4	
	After modification			Page		1	
	Modified by			Frequency		50Hz	
	Checked by			Page		1	
	Proof/read by			Totally		4	
	Designer			Page		1	
	Drawer			Page		1	
Version		Title		Drawing No.		Scale	
D		SAL-5HP-UG Main Circuit Diagram		SAL-5HP-UG-CE-4.00V-0-1		Page 1	
Approved by				Standard		CE	
Date		20170919		Voltage		400V	
Modify date				Frequency		50Hz	
Before modification				Totally		4	
After modification				Page		1	
Modified by				Frequency		50Hz	
Checked by				Page		1	
Proof/read by				Totally		4	
Designer				Page		1	
Drawer				Page		1	

**SHINI**  
信易電熱機械股份有限公司  
Shini Plastics Technologies, Inc.

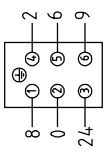


版本 Ver.B

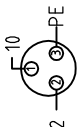
Mark	Before modification	Modified by	Modify date	Version	D	Title	Drawing No.		Page	2	
	After modification	Modified by	Modify date				SAL-5HP-UG				Scale
							SAL-5HP-UG-CE-400V-0-2		Totally		4
							SHINI		Frequency		50Hz
							信易塑料機械股份有限公司 Shini Plastics Technologies, Inc.		Voltage		400V
							SHINI		Frequency		50Hz



X1(Heavy load joint for connecting hopper and the main machine )



X3(3PWaterproof connector )



Connect proportional valve or shut-off valve (Option)

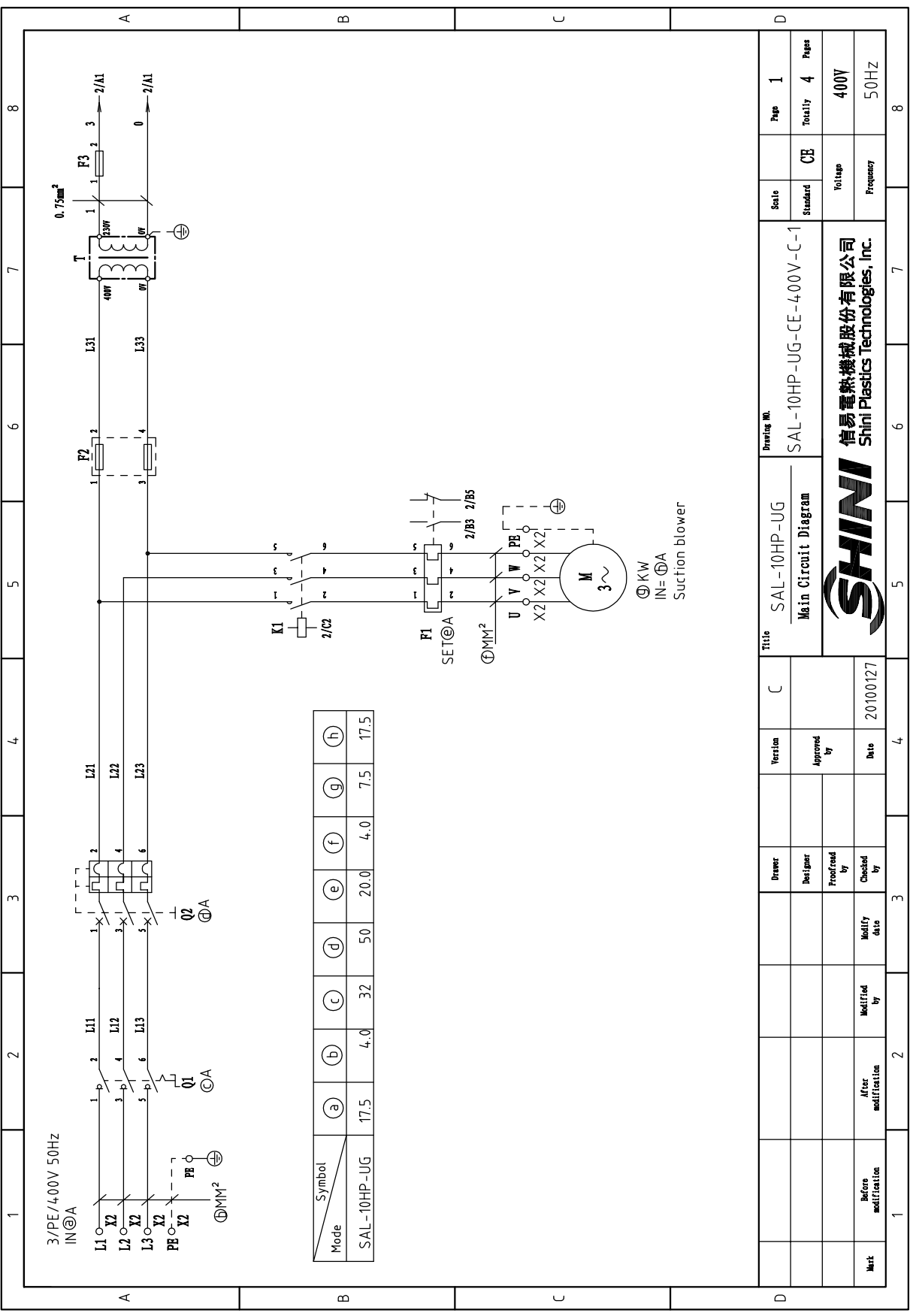
Subscript	Function	Description
1	Material level signal (SENS)	Connect to material level sensor
2	GND	
3	24V+	
4	110VAC(COM)	Common terminal of solenoid valve
5	Diaphragm solenoid valve	230VAC solenoid valve
6	Spray solenoid valve	230VAC solenoid valve

版本 Ver.B

Title		Drawing No.		Scale	Page
SAL-5HP-UG		SAL-5HP-UG-CE-4.00V-0-3		Standard	3
Electrical Components Layout		CE		Totally 4 Pages	
SHINI		信易塑料机械股份有限公司 Shini Plastics Technologies, Inc.		Voltage 400V	
Mark		Before modification		Frequency 50Hz	
Merk		After modification		8	
Version		Date		Page	
Ver.B		20170919		3	
Designer		Checked by		Page	
				3	
Proofread by		Modify date		Page	
				4	
Approved by		Date		Page	
				4	
Revision		Date		Page	
D		20170919		3	

1	2	3	4	5	6	7	8	
NO.	Symbol	Name	Manufacturer	Type	Specification	Number	Material number	Remark
1	Q1	Main switch	EATON	T0-2-1/EA/SVB	16A	1	YE10021160000	
2	Q2	Circuit breakers	CHNT	BM-63C/3025S	25A	1	YE40302503000	
3	K1	Contactors	SIEMENS	3RT16017-1AN21	230V 50/60HZ 12A 1NO	1	YE00601721000	A
4	T	Transformer	BAIYUN	IN=400V OUT=230V	350mA	1	YE70402300200	
5	F1	Overload relays	SIEMENS	3RU6116-1JB0	7-10A	1	YE01167100000	
6	FU1	Fuse base	CHNT	RT28-32	500V 32A	1	YE41032200000	
7		Fuse core	MRO	---	500V 2A 10x38	2	YE46002000100	
8	FU2	Fuse	YINDA	FS-10	250V 2A	1	YE41001000000	
9	S1	Alternative switch	MOLVETNO	R210-C5LBW4P	4P (WH)	1	YE10210400000	
10	H1	Buzzer	HITPOINT	PF-35A	220VAC 50/60HZ	1	YE84003500000	(2)
11	H2	Alarm light	SHINI	LTE-3051	230VAC 50/60HZ	1	YE83305100200	B
12	A1	Microcomputer mainboard	YUYUN	CU-01 Main	230VAC 50/60HZ	1	YE80023560000	
13	A2	Keypad	YUYUN	CU-01 Keypad		1	YE80001000000	
14	X1	Heavy duty connector	SIBAS	HDC-HE-06	16A 400V 母	1	YE68061640100	
15	X3	Waterproof linker	ADPULO	AQF16K3Z(母端)	250V 3P	1	YE62163000100	
16	M	Blower	SHINI	RB-550	5HP 400V 50HZ	1	---	(1)
17	Y1	Solenoid valve	Airtec	4V210-06	220V	1	---	(1)
18	Y2	Solenoid valve	Airtec	4V210-06	220V	1	---	(2)
19	X2	Spring wiring terminal	Honeywell	SK2.5	2.5mm <sup>2</sup>	2	YE60002503200	C
20		Grounding terminal	Honeywell	GK2.5PE	2.5PE	1	YE60002503400	
21		Grounding terminal	Honeywell	GK5PE	4PE	2	YE60000403500	
22		Spring wiring terminal	Honeywell	SK4	4mm <sup>2</sup>	6	YE60000403200	
23		Terminal block	---	---	PCS	4	YE60000003900	
24		Spring wiring terminal	Honeywell	SK2.5	2.5mm <sup>2</sup>	2	YE60002503200	(2)
25		Grounding terminal	Honeywell	GK2.5PE	2.5PE	1	YE60002503400	(2)
版本		Ver.B	Notes: (1) Means not part of control box; (2) Stands for optional.					
			Drawer	Version	Title		Drawing Mt.	
			Designer	D	SAL-5HP-UG		SAL-5HP-UG-CE-400V-0-4	
			Proofread by	Electrical Components List				Scale
			Checked by	Approved by				Standard
			Modify date	Date				Tolerance
			Before modification	20170919				CE
			After modification					Totally
								4
								Pages
								4
								400V
								50Hz
								8

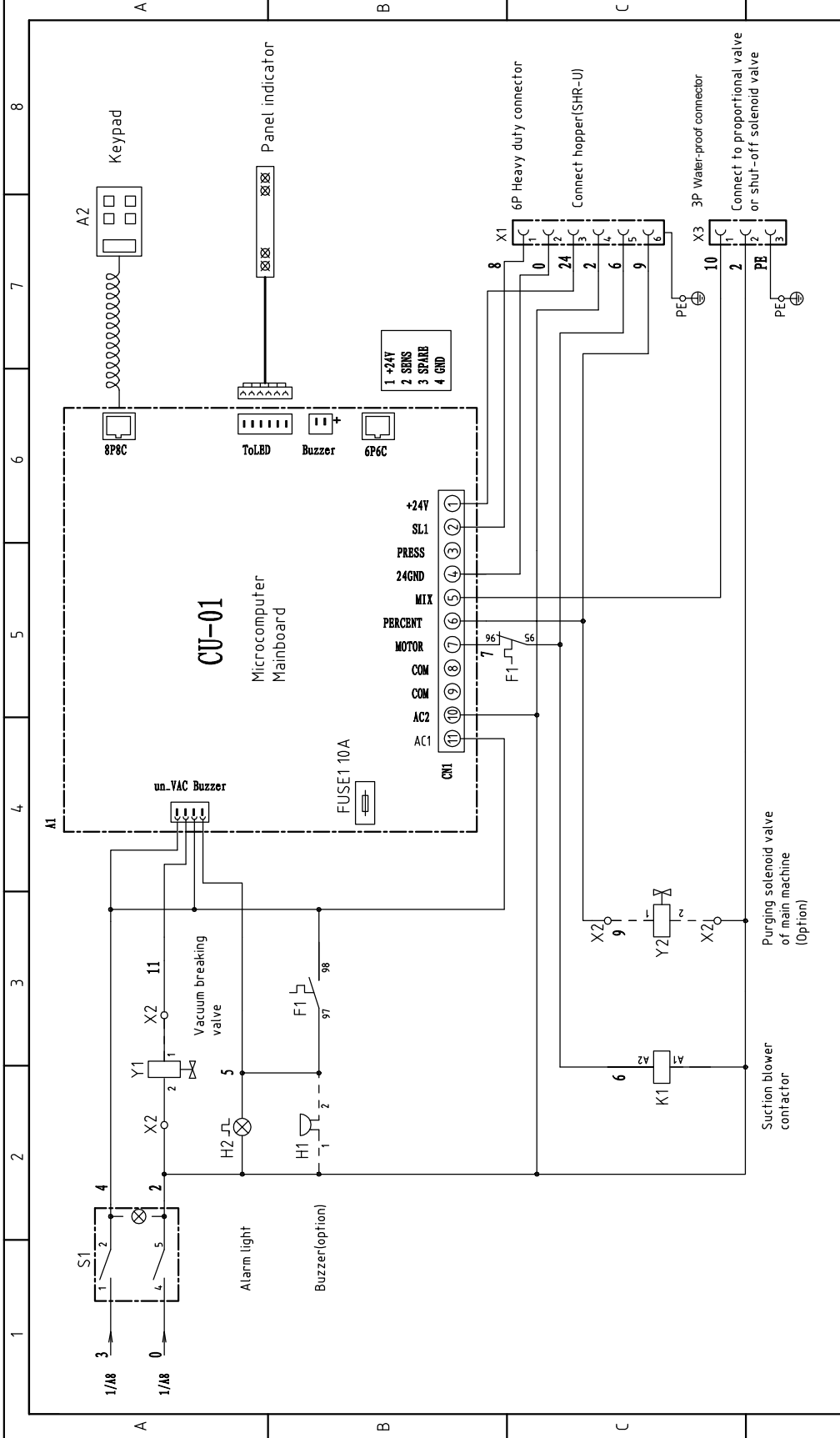




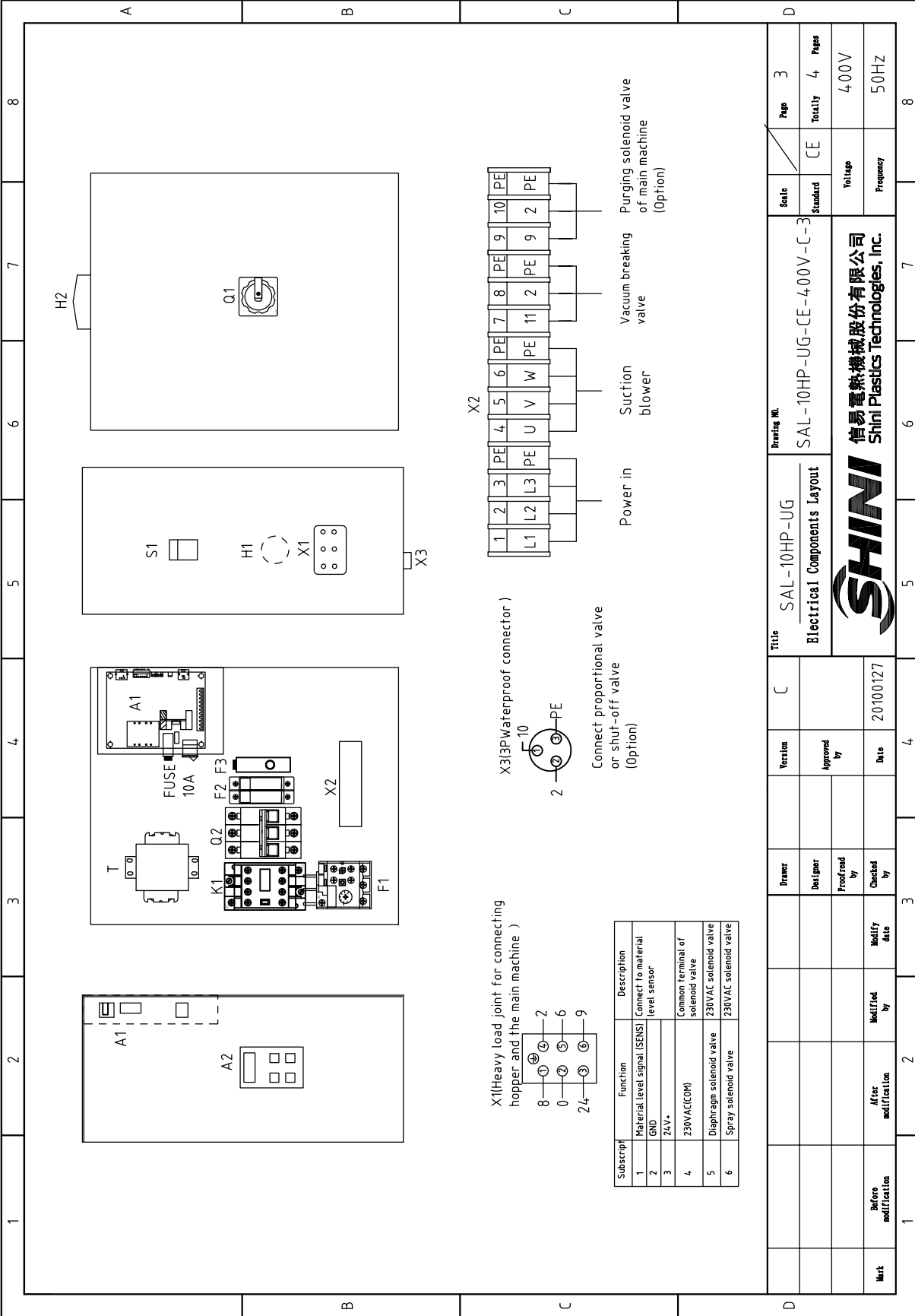
Mode	Symbol	(a)	(b)	(c)	(d)	(e)	(f)	(g)	(h)
SAL-10HP-UG		17.5	4.0	32	50	20.0	4.0	7.5	17.5

Title		Drawing No.		Scale	Page
SAL-10HP-UG Main Circuit Diagram		SAL-10HP-UG-CE-400V-C-1		CE	1
Version		Standard		Totally 4	
Approved by		Voltage		400V	
Date		Frequency		50Hz	
20100127					
Date					
20100127					
Date					
20100127					

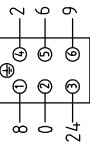
**SHINI**  
信易塑料機械股份有限公司  
Shini Plastics Technologies, Inc.



Title		Drawing No.	
SAL-10HP-UG Control Circuit Diagram		SAL-10HP-UG-CE-400V-C-2	
Version		Scale	
Approved by	CE	Page 2	
Proffred by		Totally 4 Pages	
Checked by		400V	
Modify date		50Hz	
Before modification		SHINI 信易塑料机械股份有限公司 Shini Plastics Technologies, Inc.	
After modification		20100127	
1	2	3	4
5	6	7	8



X1(Heavy load joint for connecting hopper and the main machine )

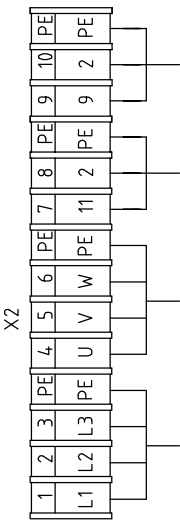


X3(3P Waterproof connector )



Connect proportional valve or shut-off valve (Option)

Subscript	Function	Description
1	Material level signal (SENS)	Connect to material level sensor
2	GND	
3	24V+	
4	230VAC(COM)	Common terminal of solenoid valve
5	Diaphragm solenoid valve	230VAC solenoid valve
6	Spray solenoid valve	230VAC solenoid valve



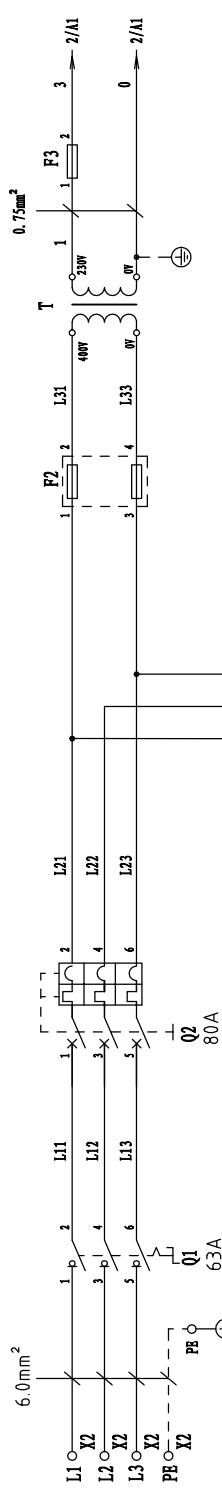
Power in      Suction blower      Vacuum breaking valve      Purging solenoid valve of main machine (Option)

Title		Drawing No.		Page
SAL-10HP-UG		SAL-10HP-UG-CE-400V-C-3		3
Electrical Components Layout		Standard	CE	Totally 4 Pages
SHINI		信易塑料机械股份有限公司 Shini Plastics Technologies, Inc.		400V
Mark		Before modification	After modification	Modify date
Merk		20100127		50Hz
Version		Approved by	Checked by	Frequency
C				4
Drawer		Designer	Proofread by	Scale
3				Standard
4				CE
5				Voltage
6				Frequency
7				8

1	2		3	4	5	6	7	8
NO.	Symbol	Name	Manufacturer	Type	Specification	Number	Material number	Remark
1	Q1	Main switch	SIEMENS	3LD22	32A	1	YE10220300000	
2	Q2	Circuit breakers	CHNT	DZ47-60	50A	1	YE40605000000	
3	K1	Contactors	SIEMENS	3TF3300-0XL2	230V 50/60HZ	1	YE00330000000	A
4	T	Transformer	BAIYUN	IN=400V OUT=230V	350mA 互感型	1	YE704023000200	
5	F1	Overload relays	SIEMENS	3UA5240-2B	12.5-20A	1	YE01125200100	
6	F2	Fuse base	CHNT	RT28-32	500V 32A	1	YE41032200000	
7		Fuse core	MRO	---	500V 2A 10*38	2	YE460020000100	
8	F3	Fuse	YINDA	FS-10	250V 2A	1	YE410010000000	
9	S1	Alternative switch	MOLVETNO	T120/55	4P (WH)	1	YE10210400000	
10	H1	Buzzer	HITPOINT	PF-35A	60-250VAC 50/60HZ	1	YE84003500000	(2)
11	H2	Alarm light	SHINI	LTE-3051	230VAC 50/60HZ	1	YE83305100200	B
12	A1	Microcomputer mainboard	YUYUN	CU-01 Main	230VAC 50/60HZ	1	M-02	
13	A2	Keypad	YUYUN	CU-01 Keypad		1	M-02	
14	X1	Heavy duty connectors	SIBAS	HDC-HE-06	16A 400V	1	YE68061640100	
15	X2	Terminal board	---	---	4.0mm <sup>2</sup>	6	YE610400000000	
16		Terminal board	---	---	4.0mm <sup>2</sup> PE	2	YE61043500000	
17		Terminal board	---	---	2.5mm <sup>2</sup>	4	YE612500400000	
18		Terminal board	---	---	2.5mm <sup>2</sup> PE	2	YE612535000000	
19	X3	Waterproof linker	AOPULO	AQF-16	250V 3P	1	YE62163000100	C
20	M	Blower	---	---	10HP	1	---	(1)
21	Y1	Solenoid valve	FESTO	MFH-5-1/8-B	230V 50/60HZ	1	YE32051800300	(1)
22	Y2	Solenoid valve	AIRTAC	2PHV120-15	230V 50/60HZ	1	YE32212000000	(2)

Notes: (1) Means not part of control box.; (2) Stands for optional.

1	2		3	4	5	6	7	8
NO.	Symbol	Name	Manufacturer	Type	Specification	Number	Material number	Remark
					Drawing No.			
					Title		SAL-10HP-UG	
					Electrical Components List		SAL-10HP-UG-CE-400V-C-4	
					Version		C	
					Designer			
					Approved by			
					Proofread by			
					Checked by			
					Modify date		20100127	
					Before modification			
					After modification			
					Scale		1:1step	
					Standard		CB	
					Page		4	
					Totally		4	
					Frequency		50HZ	
					SHINI		信易塑料机械股份有限公司 Shini Plastics Technologies, Inc.	

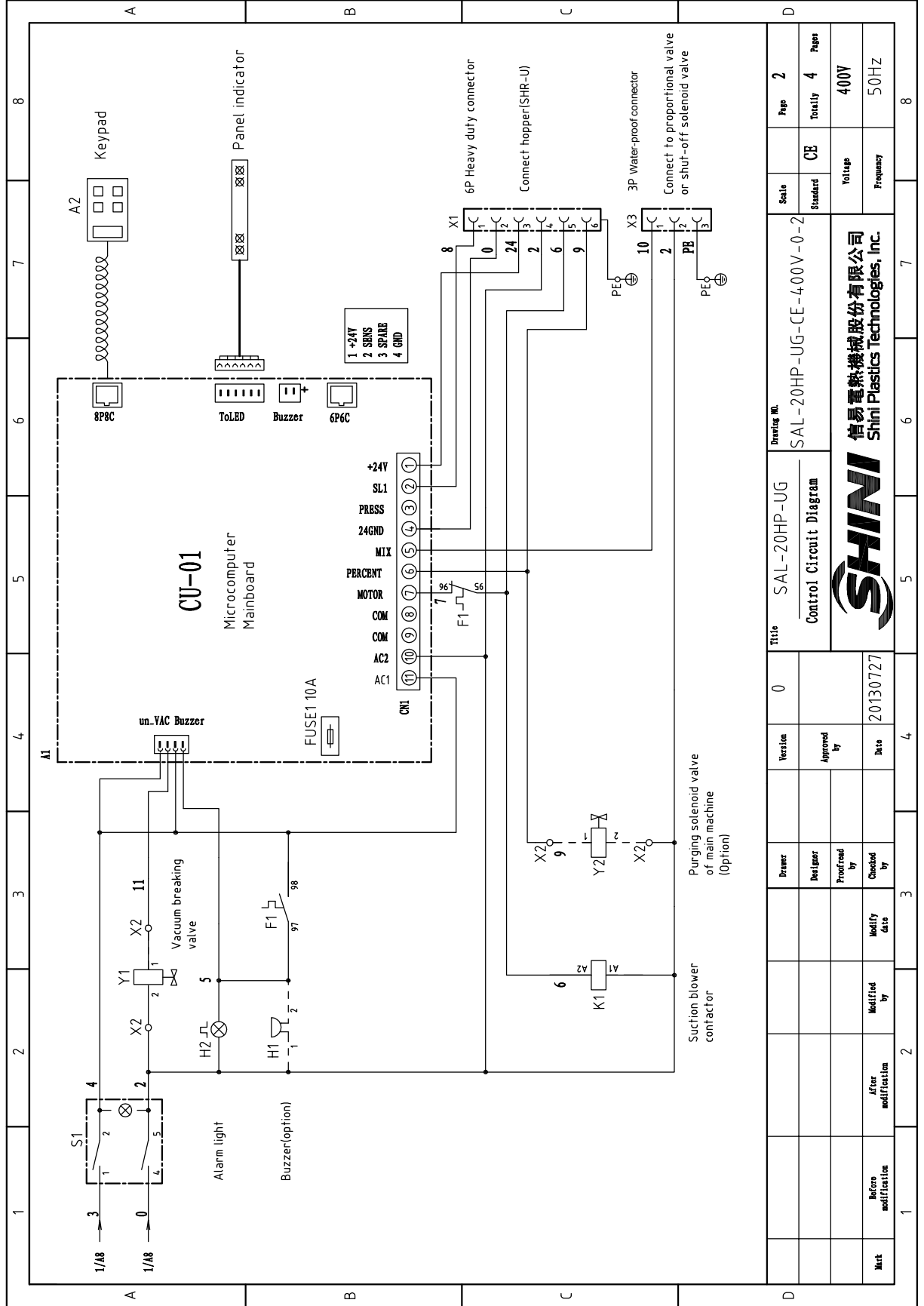


3/PE/4.00V 50Hz  
IN=27A

P=13KW  
IN=27A

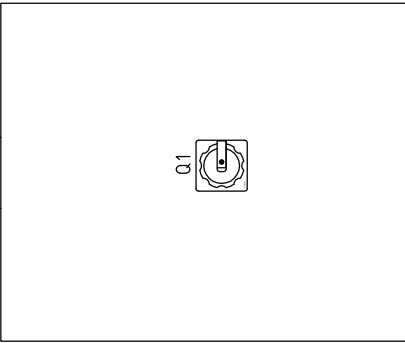
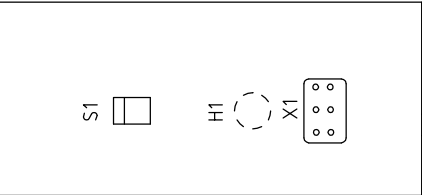
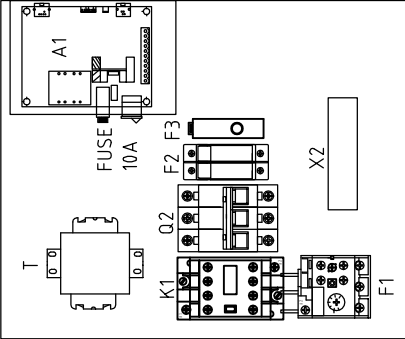
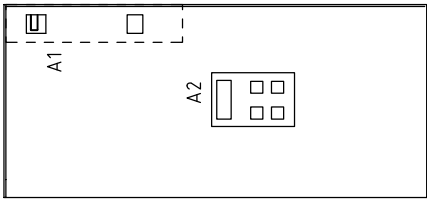
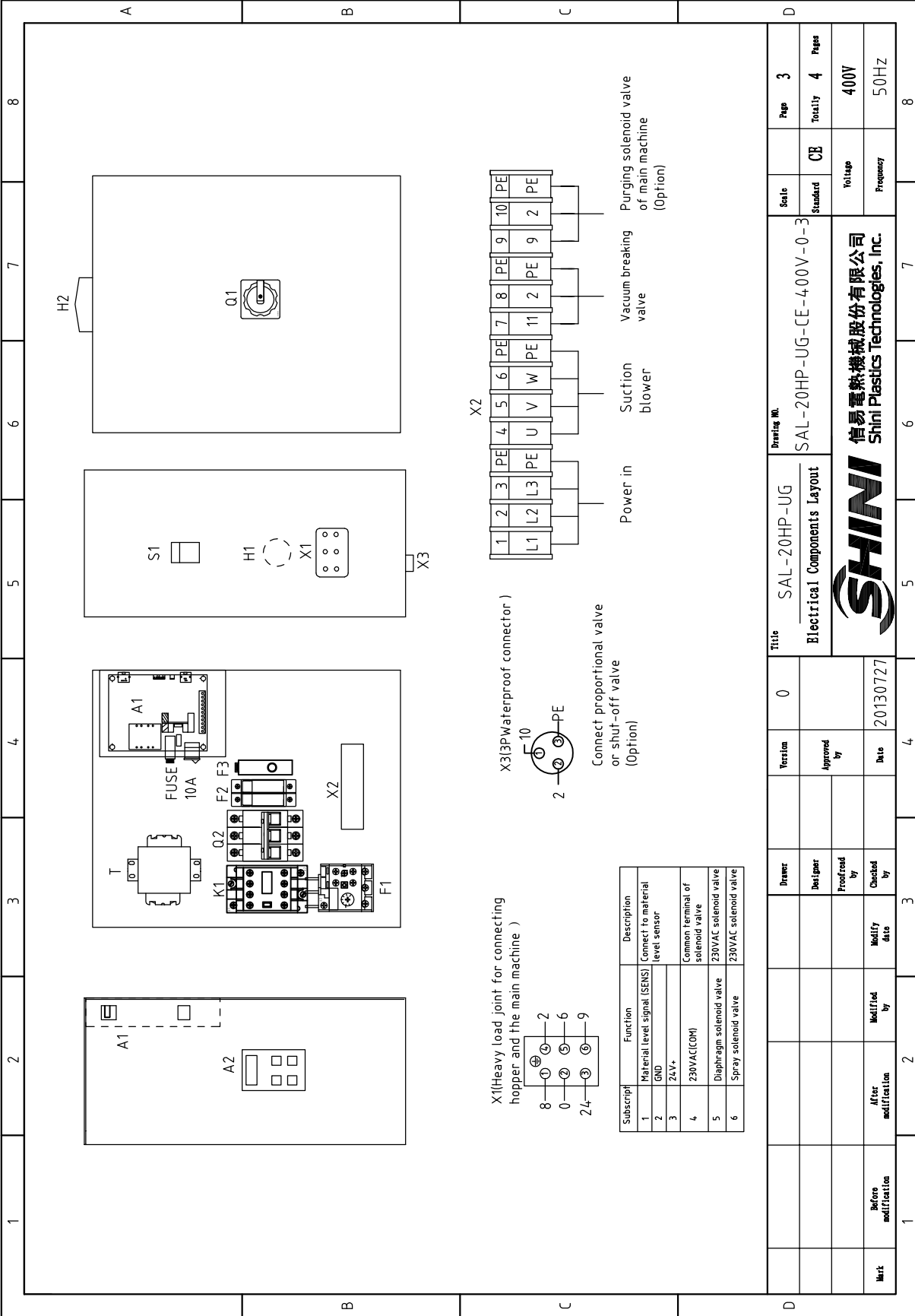
Suction blower

Title		SAL-20HP-UG		Drawing No.		SAL-20HP-UG-CE-400V-0-1		Scale		Page 1	
Version		0		Approved by		Standard		CE		Totally 4	
Date		20130727		Checked by		Voltage		400V		Frequency	
Before modification		After modification		Modify date		SHINI		信易電熱機械股份有限公司 Shini Plastics Technologies, Inc.		50Hz	

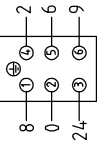


Title		SAL-20HP-UG		Drawing No.		SAL-20HP-UG-CE-400V-0-2	
Version		0		Scale		CE	
Designer				Standard		Toitise	
Profread by				Totaly		4	
Checked by		20130727		Pages		400Y	
Modify date				Frequency		50HZ	
Before modification				Company		SHINI	
After modification				Shini Plastics Technologies, Inc.			
Mark				Date		20130727	
				Page		2	
				Totally		4	
				Frequency		50HZ	

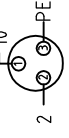




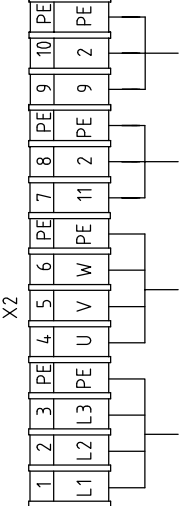
X1 Heavy load joint for connecting hopper and the main machine )



X3(3P)Waterproof connector )



Connect proportional valve or shut-off valve (Option)



Power in Suction blower Vacuum breaking valve Purging solenoid valve of main machine (Option)

Subscript	Function	Description
1	Material level signal (SENS)	Connect to material level sensor
2	GND	
3	24V+	Common Terminal of solenoid valve
4	230VAC(COM)	230VAC solenoid valve
5	Diaphragm solenoid valve	230VAC solenoid valve
6	Spray solenoid valve	230VAC solenoid valve

Title		Drawing No.		Scale	Page
SAL-20HP-UG		SAL-20HP-UG-CE-400V-0-3		Standard	3
Electrical Components Layout		CE		Totally 4 Pages	
SHINI		信易塑料机械股份有限公司		Voltage 400V	
Mark		Shini Plastics Technologies, Inc.		Frequency 50Hz	
Version		Date		8	
0		20130727			
Designer		Checked by			
Proofread by		Modify date			
After modification		Modified by			
Before modification					

1	2	3	4	5	6	7	8
NO.	Symbol	Name	Manufacturer	Type	Specification	Number	Material number
1	Q1	Main switch	SIEMENS	3LD25	63A	1	YE10250400000
2	Q2	Circuit breakers	CHNT	DZ150-80	80A	1	YE40800300000
3	K1	Contactors	SIEMENS	3RT5035-1AN20	220V 50/60Hz	1	YE00503500000
4	T	Transformer	BAIYUN	IN=400V OUT=230V	350mA 互感型	1	YE70402300200
5	F1	Overload relays	SIEMENS	3RU5136-4EB0	22-32A	1	YE01223200000
6	F2	Fuse base	CHNT	RT28-32	500V 32A	1	YE41032200000
7		Fuse core	MRO	10x38	500V 2A	2	YE46002000100
8	F3	Fuse	YINDA	FS-10	250V 2A	1	YE41001000000
9	S1	Alternative switch	MOLVETNO	T120/55	4P (WH)	1	YE10210400000
10	H1	Buzzer	HITPOINT	PF-35A	60-250VAC 50/60HZ	1	YE84003500000
11	H2	Alarm light	SHINI	LTE-3051	230VAC 50/60HZ	1	YE83305100200
12	A1	Microcomputer mainboard	YUYUN	CU-01 Main	230VAC 50/60HZ	1	YE80023560000
13	A2	Keypad	YUYUN	CU-01 Keypad	---	1	YE80001000000
14	X1	Heavy duty connectors	SIBAS	HDC-HE-06	16A 400V	1	YE68061640100
15	X2	Terminal board	PHOENIX	TB6 1	6.0mm <sup>2</sup>	6	YE61060000000
16		Terminal board	PHOENIX	TB6 PE 1	6.0mm <sup>2</sup> PE	2	YE61063500000
17		Terminal board	PHOENIX	TB2.5B 1	2.5mm <sup>2</sup>	4	YE61250040000
18		Terminal board	PHOENIX	TB2.5B PE 1	2.5mm <sup>2</sup> PE	2	YE61253500000
19	X3	Waterproof linker	AOPULO	AQF-16	250V 3P	1	YE62163000100
20	M	Blower	---	---	400V 50/60Hz 20HP	1	---
21	Y1	Solenoid valve	FESTO	MFH-5-1/8-B	230V 50/60Hz	1	---
22	Y2	Solenoid valve	AIRTAC	2PHV120-15	230V 50/60Hz	1	---
							(1)(2)

Notes: (1) Means not part of control box.; (2) Stands for optional.

D			
1	2	3	4
Mark	Before modification	Modified by	Modify date
			20130727
		Checked by	Date
		Proofread by	Approved by
		Designer	Version
		Drawer	0
Title			
SAL-20HP-UG		Drawing No.	
Electrical Components List		SAL-20HP-UG-CE-400V-0-4	
Scale		Page	
Standard	CE	Totally	4
101step		Pages	400V
Frequency			50Hz
1	2	3	4
5	6	7	8

