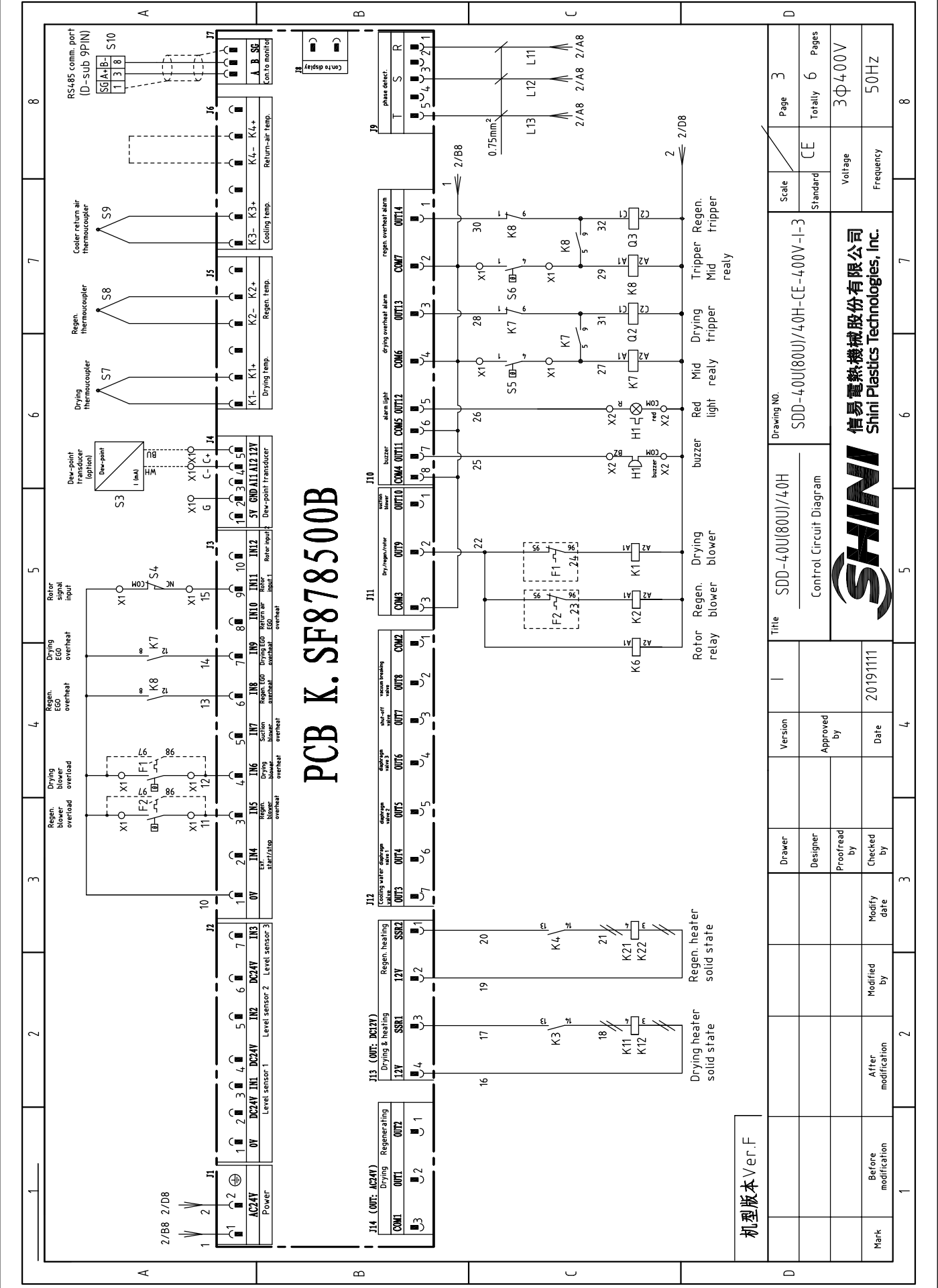


机型版本 Ver.F

1	2	3	4	5	6	7	8
Title		SDD-40U(80U)/40H		Drawing NO.		SDD-40U(80U)/40H-CE-400V-1-2	
Version		1		Standard		CE	
Designer		Approved by		Voltage		3φ400V	
Proofread by		Date		Frequency		50Hz	
Checked by		20191111		Page		2	
Modified by		Modify date		Totally		6 Pages	
After modification		Mark		Scale		Voltage	
Before modification		1		Frequency		50Hz	
		2					
		3					
		4					
		5					
		6					
		7					
		8					



PCB K. SF878500B



机型版本 Ver.F

1	2	3	4	5	6	7	8
Title		SDD-4.0U(80U)/4.0H		SDD-4.0U(80U)/4.0H-CE-400V-I-3		Page 3	
Version		1		Standard		CE	
Designer		Approved by		Voltage		3Φ400V	
Proofread by		Date		Frequency		50HZ	
Checked by		20191111		Totally		6 Pages	
After modification		Modify date		Voltage		3Φ400V	
Before modification		Modify date		Frequency		50HZ	



Drawing NO.

SDD-4.0U(80U)/4.0H-CE-400V-I-3

Control Circuit Diagram

Drying heater solid state

Regen. heater solid state

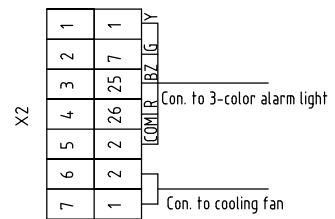
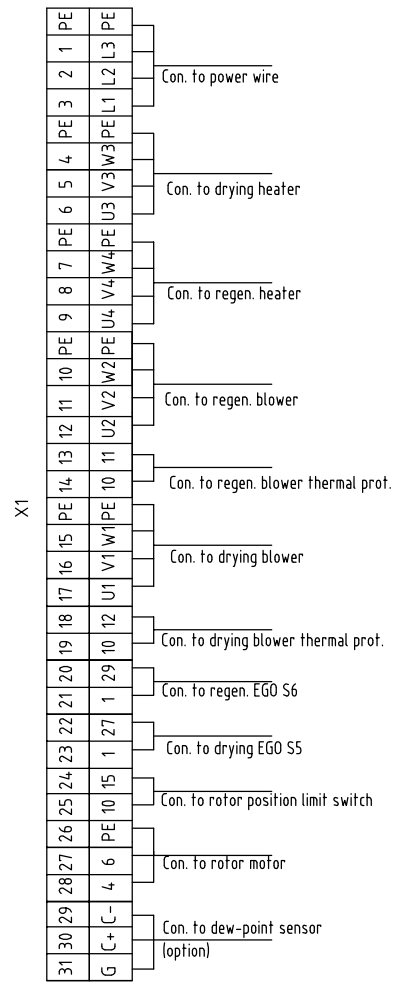
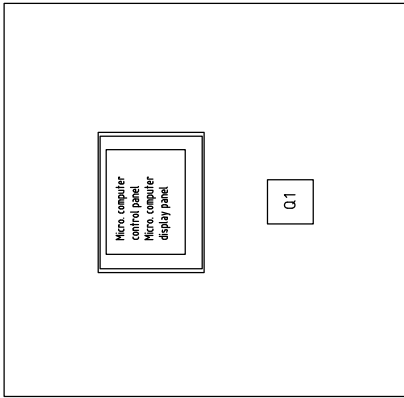
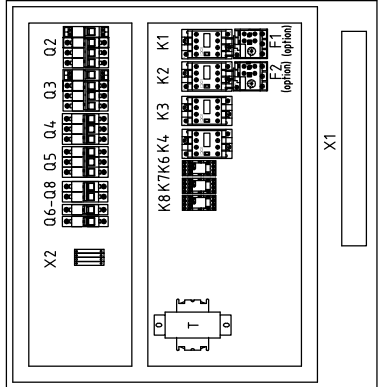
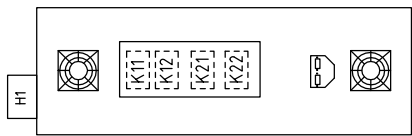
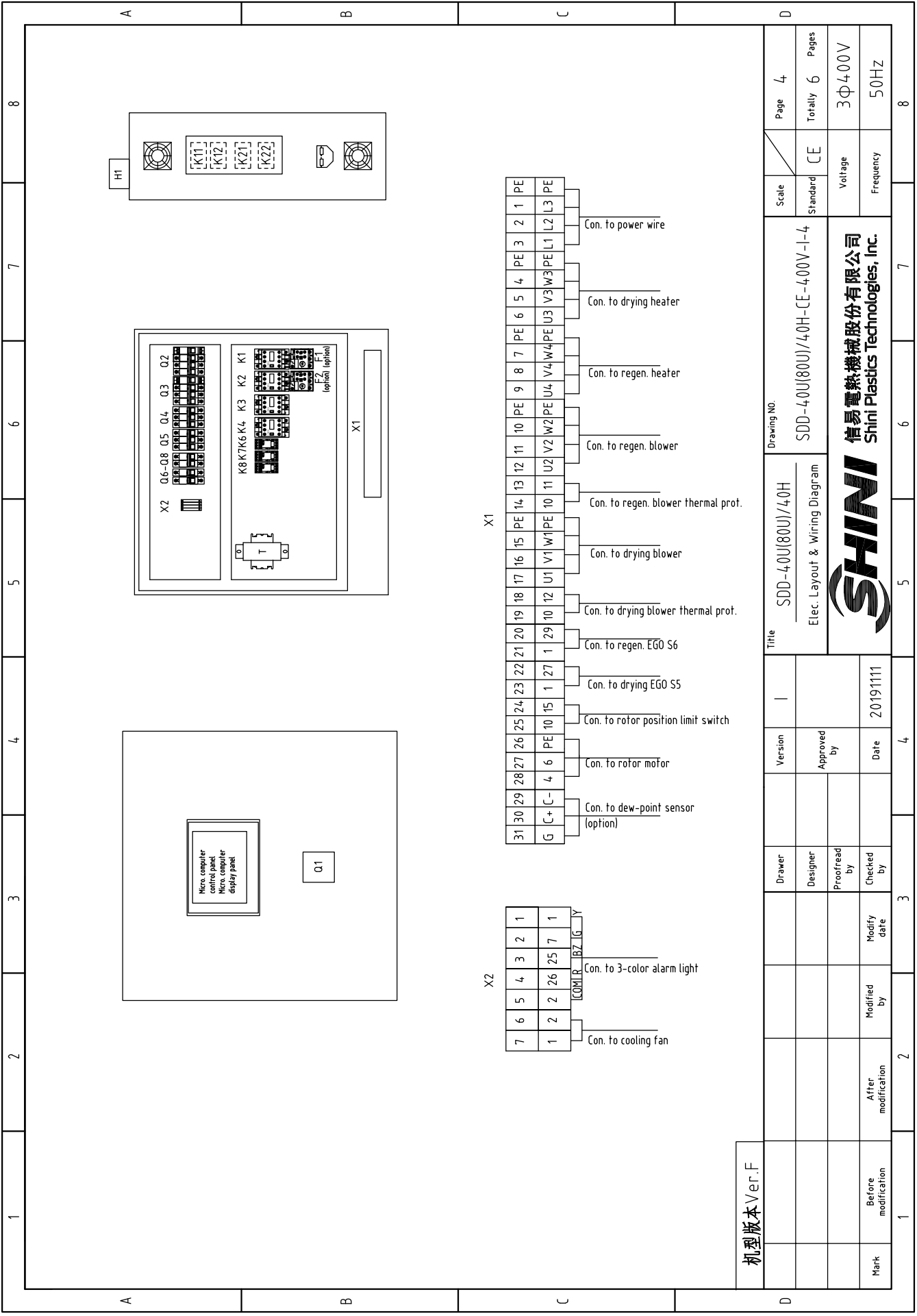
Rotor Regen. Drying relay blower

Red light

Tripper Regen. Mid Tripper

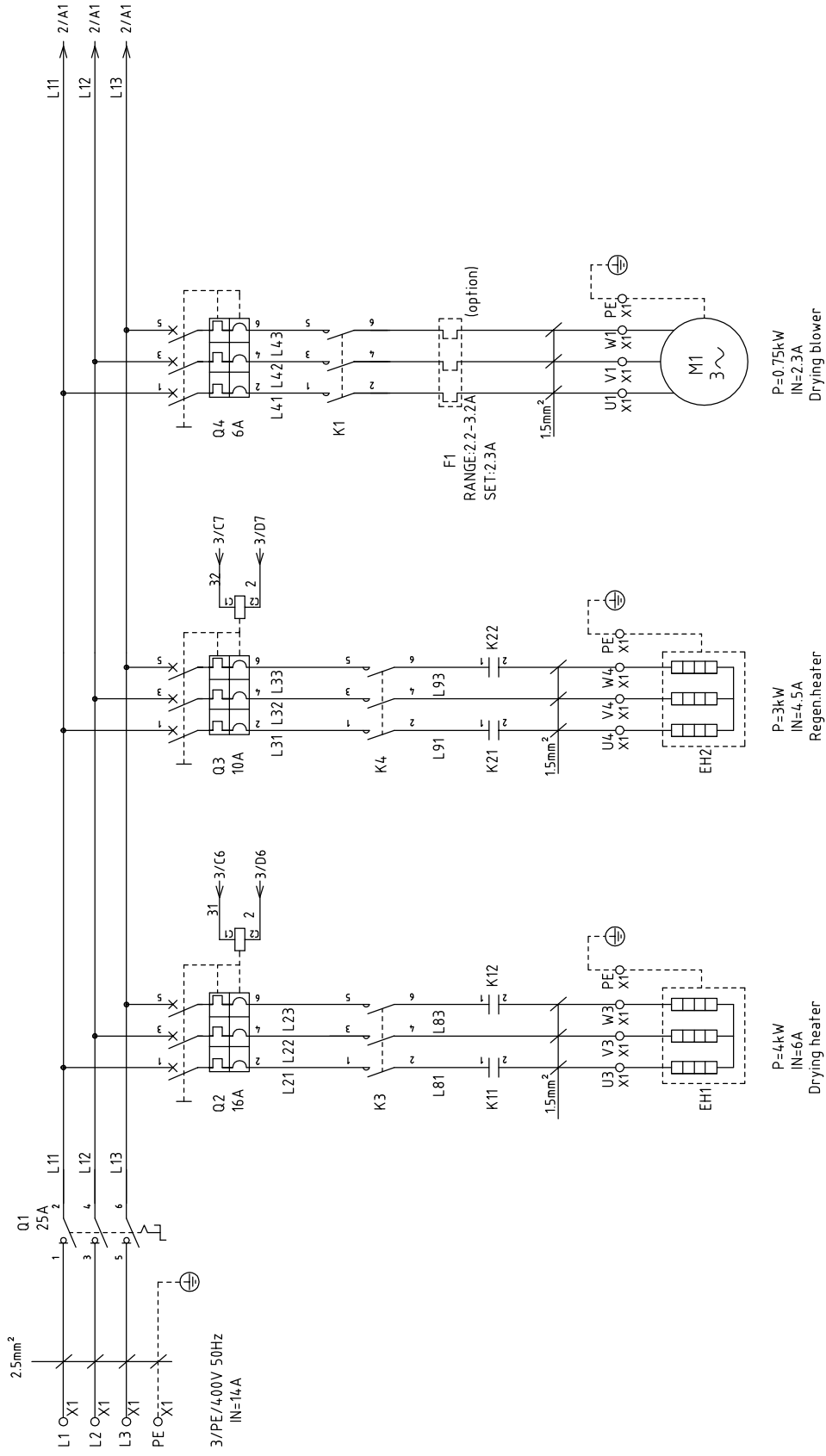
Regen. Tripper

Regen. Tripper



机版本 Ver.F	Drawing NO.		Scale	Page
	SDD-40U(80U)/40H-CE-400V-I-4		Standard	Totally 6
Title		Voltage		Pages
SDD-40U(80U)/40H Elec. Layout & Wiring Diagram		3Φ400V		Frequency
SHINI 信易電熱機械股份有限公司 Shini Plastics Technologies, Inc.		Frequency		8
Version	Approved by	Date	8	
I		20191111	8	
Designer	Checked by	Modify date	8	
			8	
Proofread by	Modified by	After modification	8	
			8	
Drawer	Checked by	Modify date	8	
			8	
			8	
			8	

1	2		3	4	5	6	7	8
No.	Symbol	Name	Manufacturer	Type	Specification	Number	Material number	Remark
1	Q1	Main switch	EATON	TO-2-1/EA/SVB/20A	20A	1	YE10021160000	
2	Q2 Q3	Circuit breaker	TECO	BM-63C 3P	10A	2	YE40301003000	
3	Q4 Q5	Circuit breaker	TECO	BM-63C 3P	6A	2	YE40300603000	A
4	Q6	Circuit breaker	TECO	BM-63C/2003S 3A 2P	3A	1	YE40200203000	
5	Q7 Q8	Circuit breaker	TECO	BM-63C/1003S 3A 1P	3A	2	YE40100203000	
6		Excitation tripper	YIJIN	MX	24V 50/60Hz	2	YE40024000000	
7	K1 K2 K3 K4	Contactor	SIEMENS	3RT6015-1AB01-24VAC	24V 50/60Hz	4	YE00601502500	
8	K6 K7 K8	Middle relay	Honeywell	GR-2C-AC24V	Base PGR-2C-E	3	YE03022400300	
9	K11 K12 K21 K22	Solid state relay	FOTEK	KSR-40DA-H	40A/480VAC/4-32VDC	4	YE03404003200	
10	F1	Thermal overload relay	SIEMENS	3RU6116-0EB0	0.55-0.8A	1	YE01161550000	(3)
11	F2	Thermal overload relay	SIEMENS	3RU6116-0EB0	0.35-0.5A	1	YE01161350000	(3)
12	T	Sensor transformer	JIUXIN	IN=400V/415V OUT=24V/230V	120VA 350MA	1	YE70040007300	
13	PCB	Micro-computer control plate+micro-computer display panel/PCB	PUMP	K-SF878500B	AC24V	1	YE81878500300	
14	S3	Dew-point transducer	SUTO	217-OEM	IN=24VDC OUT=4-20mA	1	YE90021700100	(1) (2)
15	S4	Limit switch	CHOYI	CYLXW-5/11G2	AC380V DC220V	1	---	(1)
16	S5 S6	Assembly EGO	EGO	55.13262.160	115-320°C	2	---	(1)
17	S7 S8 S9	Thermocouple	SHINI	---	K	3	---	(1)
18	S10	Comm. interface plate RS-485 (Dsub-9pin connector)	YUYUN	---	485ToDsub_V23	1	YE90048501200	
19		Shell RS485(SAL-700G-A-19)ver.0	BINCHENG	---	---	1	YR40048500000	C
20	FM	Fan	SUNON	12x12CM/24V/50/60HZ	24VAC 40W	1	---	(1)
21	H1	3-color alarm light (red,gre,yel+buzzer)	SHINI	Priority	24V 50/60Hz	1	BL90002401520	(1)
22	X1	Terminal board	HONEYWELL	SK4	4mm ²	19	YE600000403200	
23		Terminal board	HONEYWELL	GK5PE	4mm ² PE	5	YE600000403500	
24		Terminal board	HONEYWELL	SK2.5	2.5mm ²	11	YE600002503200	
25		Terminal board	HONEYWELL	GK2.5PE	2.5mm ² PE	1	YE600002503400	
机型版本Ver.F								
Notes:(1) Materials not in the control box; (2)Optional dew-point monitor(-D); (3) Optional thermal overload relay.								
Title				Version		Scale		Page
SDD-4.0U(80U)/4.0H				I		SDD-4.0U(80U)/4.0H-CE-4.00V-I-5		5
Elec. Parts List 1				Approved by		Standard		Totally
						CE		6
Date				Checked by		Voltage		Pages
20191111						3Φ 4.00V		50HZ
SHINI				SHINI		SHINI		SHINI
信易電熱機械股份有限公司				Shini Plastics Technologies, Inc.		Shini Plastics Technologies, Inc.		Shini Plastics Technologies, Inc.
1	2		3	4	5	6	7	8



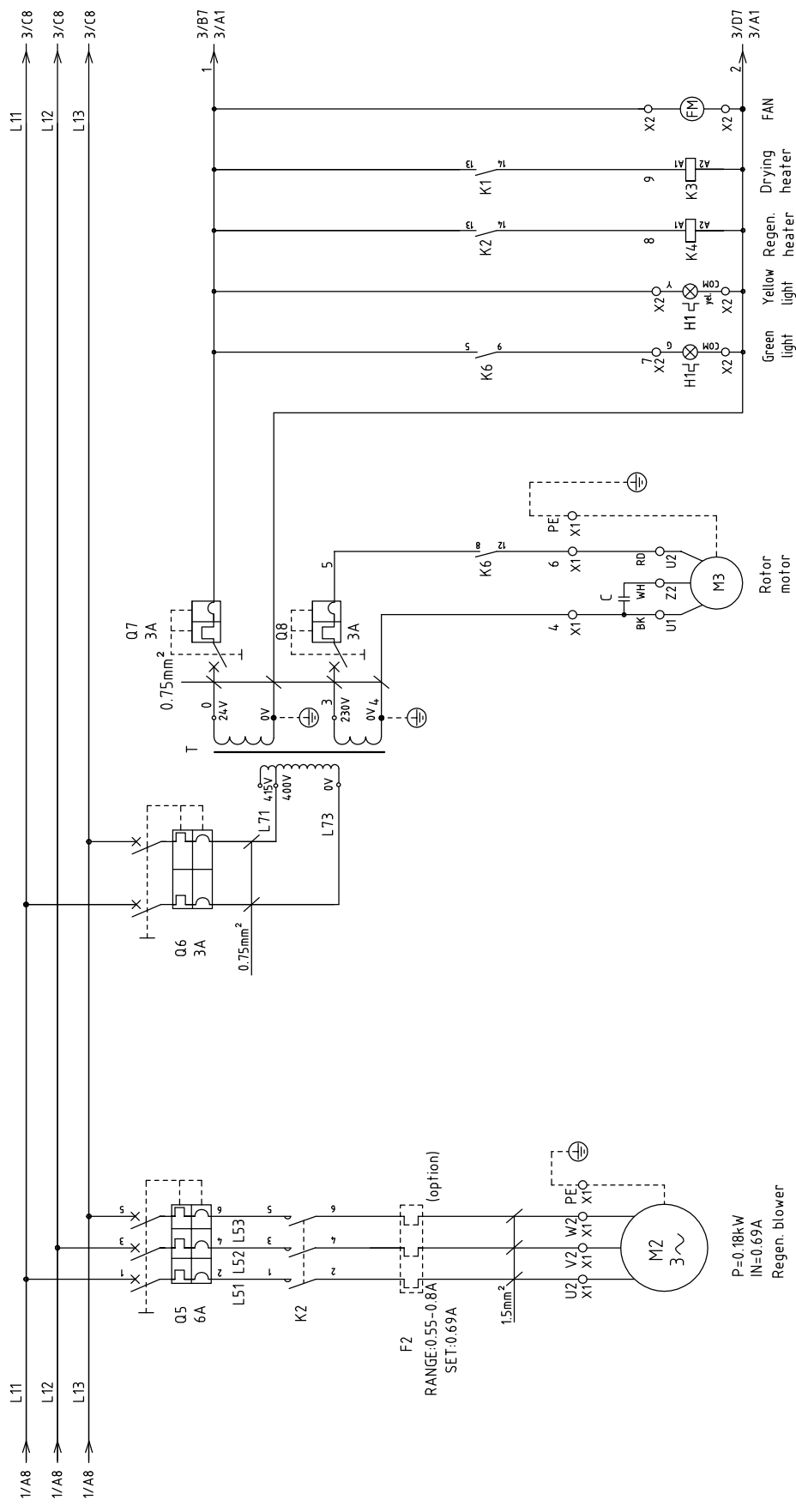
机 型 版 本	Ver.E
Mark	Before modification
	After modification
	Modified by
	Modify date
	Checked by
	Proofread by
	Designer
	Drawer

Version	I
Approved by	
Date	20191111
Checked by	
Modify date	
Modified by	
Proofread by	
Designer	
Drawer	

Title		SDD-120U(160U)/80H Main Circuit Diagram 1	
Drawing NO.		SDD-120U(160U)/80H-CE-400V-I-1	
Scale	Standard	Page	1
	CE	Totally	6
		Pages	
		Voltage	3Φ400V
		Frequency	50HZ



信易电热机械股份有限公司
Shini Plastics Technologies, Inc.



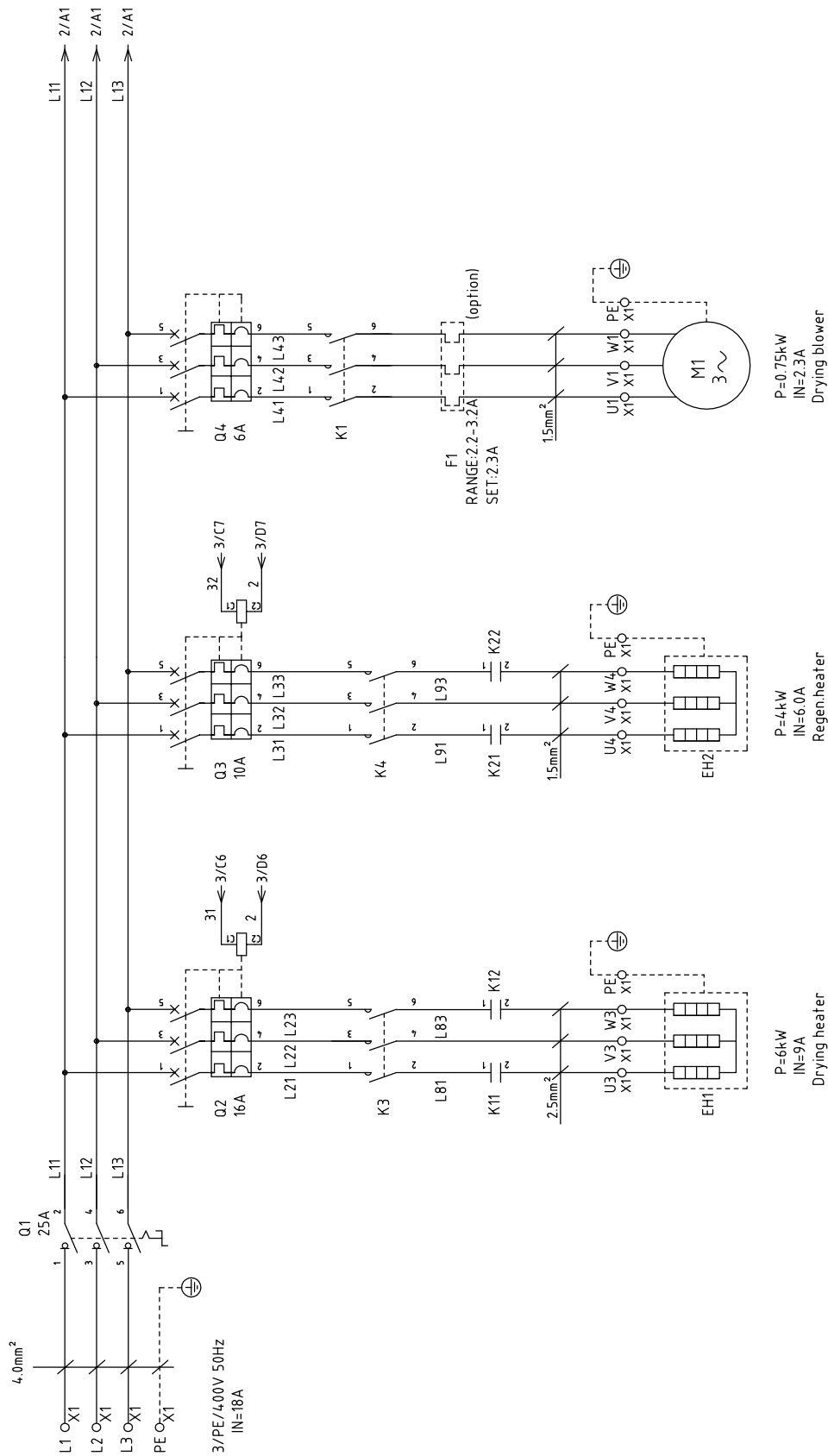
机型版本 Ver.E

D	Mark	Before modification	Modified by	Modify date	Checked by	Date	20191111
	Proofread by		Approved by		Version	1	
Title							
SDD-120U(160U)/80H				SDD-120U(160U)/80H-CE-400V-1-2			
Main Circuit Diagram 2				Drawing NO.			
SHINI				信易电热机械股份有限公司 Shini Plastics Technologies, Inc.			
Scale				Standard			
CE				Page 2			
Voltage				Totally 6 Pages			
Frequency				3Φ400V			
50Hz				8			

No.	Symbol	Name	Manufacturer	Type	Specification	Number	Material number	Remark
1	Q1	Main switch	EATON	P1-25/EA/SVB	25A	1	YE10125250000	
2	Q2	Circuit breaker	TECO	BM-63C 3P	16A	1	YE40301603000	
3	Q3	Circuit-breaker	TECO	BM-63C 3P	10A	1	YE40301003000	
4	Q4 Q5	Circuit-breaker	TECO	BM-63C 3P	6A	2	YE40300603000	
5	Q6	Circuit-breaker	TECO	BM-63C/2003S 3A 2P	3A	1	YE40200203000	
6	Q7 Q8	Circuit-breaker	TECO	BM-63C/1003S 3A 1P	3A	2	YE40100203000	
7		Excitation tripper	YIJIN	MX	24V 50/60Hz	2	YE40024000000	
8	K1 K2 K3 K4	Contact	SIEMENS	3RT6015-1AB01-24VAC	24V 50/60Hz	4	YE00601502500	
9	K6 K7 K8	Middle relay	Honeywell	GR-2C-AC24V	Base PGR-2C-E	3	YE03022400300	
10	K11 K12 K21 K22	Solid state relay	FOTEK	KSR-40DA-H	40A/480VAC/4-32VDC	4	YE03404003200	
11	F1	Thermal overload relay	SIEMENS	3RU6116-1DB0	2.2-3.2A	1	YE01160220000	(3)
12	F2	Thermal overload relay	SIEMENS	3RU6116-0HB0	0.55-0.8A	1	YE01161550000	(3)
13	T	Sensor transformer	JIUXIN	IN=400V/415V OUT=24V/230V	120VA 350MA	1	YE70040007300	
14	PCB	Micro-computer control plate+micro-computer display panel/PCB	PUMP	K.SF878500B	AC24V	1	YE81878500300	
15	S3	Dew-point transducer	SUTO	217-OEM	IN=24VDC OUT=4-20mA	1	YE90021700100	(1) (2)
16	S4	Micro switch	CHOYI	CYLXW-5/11G2	AC380V DC220V	1	---	(1)
17	S5 S6	Assembly EGO	EGO	(55.13262.160)	115-320°C	2	---	(1)
18	S7,S8,S9	Thermocouple	SHINI	---	K	3	---	(1)
19	S10	Comm. interface plate RS-485 (Dsub-9pin connector)	YUYUN	---	4.85ToDsub_V23	1	YE90048501200	
20		Shell RS485(SAL-700G-A-19)Ver.0	BINCHEG	---	---	1	YR40048500000	
21	FM	Fan	SUNON	12x12CM/24V/50/60HZ	24VAC 40W	1	---	(1)
22	H1	3-color alarm light (red,gre,yel+ buzzer)	SHINI	Priority	24V 50/60Hz	1	BL90002401520	(1)
23	X1	Terminal board	HONEYWELL	SK4	4mm ²	19	YE60000403200	
24		Terminal board	HONEYWELL	GK5PE	4mm ² PE	5	YE60000403500	
25		Terminal board	HONEYWELL	SK2.5	2.5mm ²	11	YE60002503200	
机版本 Ver.E								
Notes:(1) Materials not in the control box; (2)Optional dew-point monitor(-D); (3) Optional thermal overload relay.								
			Drawer	Version	Title	Drawing NO.		Scale
			Designer	Approved by	SDD-120U(160U)/80H	SDD-120U(160U)/80H-CE-400V-I-5		Page 5
			Proofread by	Date	Elec. Parts List 1		Standard	Totally 6 Pages
			Checked by	20191111			CE	6
			Modified by				Voltage	3Φ400V
			Modify date				Frequency	50HZ
Mark	Before modification	After modification	3	4	5	6	7	8



信易電熱機械股份有限公司
Shini Plastics Technologies, Inc.



机型版本 Ver.E

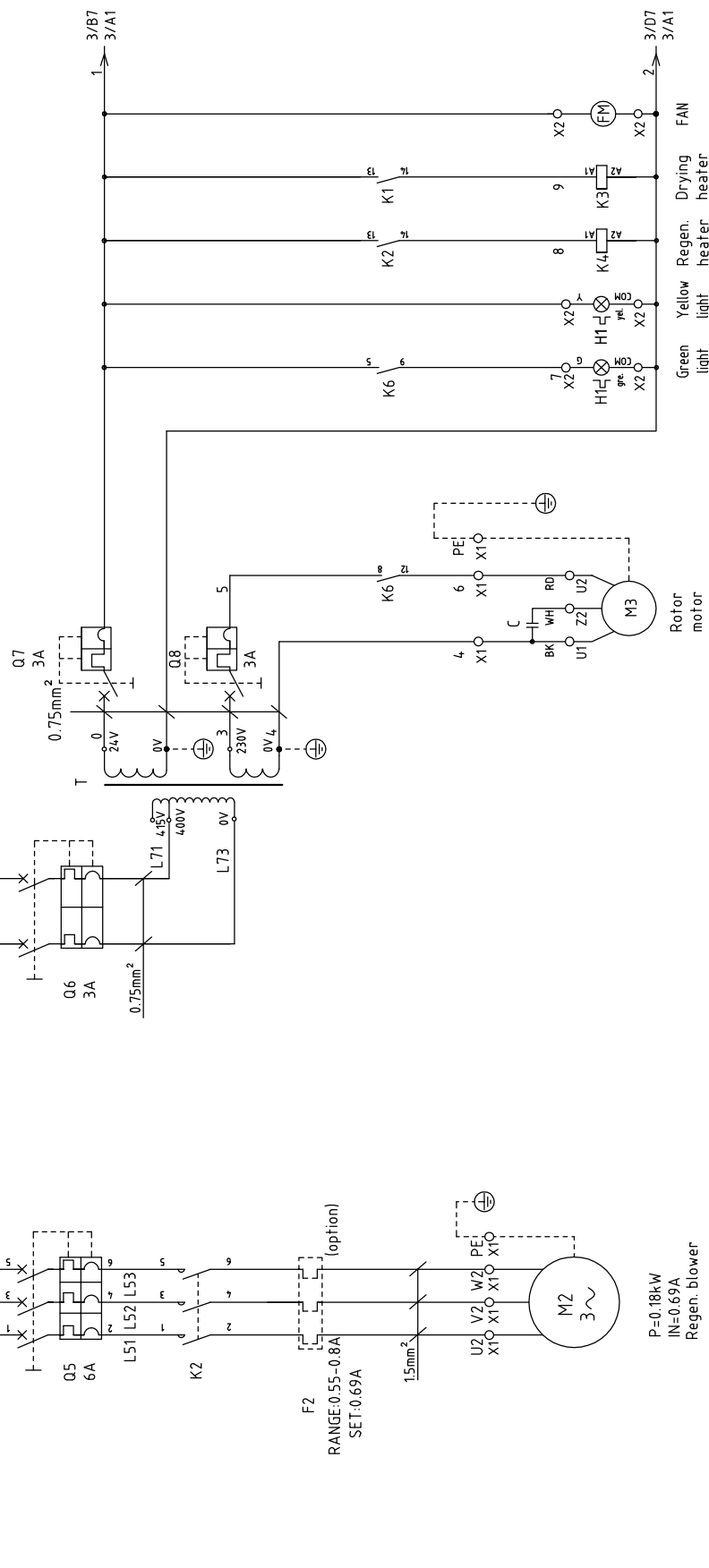
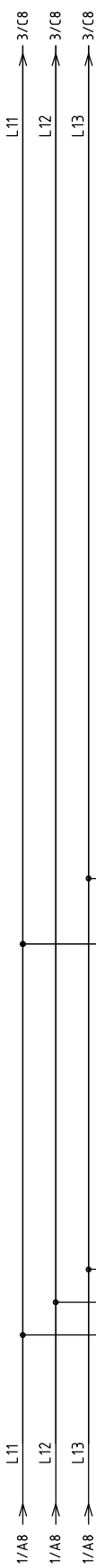
D	G	Title		Drawing NO.		Scale	Page 1
		SDD-160U/120H Main Circuit Diagram 1		SDD-160U/120H-CE-400V-G-1			
Mark	Before modification	After modification	Modified by	Modify date	Checked by	Date	Voltage
1	2	3	4	5	6	7	8



1	2		3	4	5	6	7	8
NO.	Symbol	Name	Manufacturer	Type	Specification	Number	Material number	Remark
1	Q1	Main switch	EATON	P1-25/EA/SVB	25A	1	YE10125250000	
2	Q2	Circuit breaker	TECO	BM-63C 3P	16A	1	YE40301603000	
3	Q3	Circuit breaker	TECO	BM-63C 3P	10A	1	YE40301003000	A
4	Q4 Q5	Circuit breaker	TECO	BM-63C 3P	6A	2	YE40300603000	
5	Q6	Circuit breaker	TECO	BM-63C/2003S 3A 2P	3A	1	YE40200203000	
6	Q7 Q8	Circuit breaker	TECO	BM-63C/1003S 3A 1P	3A	2	YE40100203000	
7		Excitation release	YIJIN	MX	24V 50/60Hz	2	YE40024000000	
8	K1 K2 K3 K4	Contactor	SIEMENS	3RT6015-1AB01-24VAC	24V 50/60Hz	4	YE00601502500	
9	K6 K7 K8	Middle relay	Honeywell	GR-2C-AC24V	Base PGR-2C-E	3	YE03022400300	
10	K11 K12 K21 K22	Solid state relay	FOTEK	KSR-40DA-H	40A/480VAC/4-32VDC	4	YE03404003200	
11	F1	Thermal overload relay	SIEMENS	3RU6116-1DB0	2.2-3.2A	1	YE01160220000	(3)
12	F2	Thermal overload relay	SIEMENS	3RU6116-0HB0	0.55-0.8A	1	YE01161550000	(3)
13	T	Sensor transformer	JIUXIN	IN=400V/415V OUT=24V/230V	120VA 350MA	1	YE70040007300	
14	PCB	Micro-computer control plate=micro-computer display panel/PCB	PUMP	K-SF878500B	AC24V	1	YE81878500300	
15	S3	Dew-point transducer	SUTO	217-OEM	IN=24VDC OUT=4-20mA	1	YE90021700100	(1)(2)
16	S4	Micro switch	CHOYI	CYLXW-5/11G2	AC380V DC220V	1	---	(1)
17	S5 S6	Assembly EGO	EGO	(55.13262.160)	115-320°C	2	---	(1)
18	S7,S8,S9	Thermocouple	SHINI	---	K	3	---	(1)
19	S10	Comm. interface plate RS-485 (Dsub-9pin connector)	YUYUN	---	485TODsub_V23	1	YE90048501200	C
20		Shell RS485(SAL-700G-A-19)ver.0	BINCHEG	---	---	1	YR40048500000	
21	FM	Fan	SUNON	12x12CM/24V/50/60HZ	24VAC 40W	1	---	(1)
Priority	H1	3-color alarm light (red,gre,yel+buzzer)	SHINI	Priority	24V 50/60Hz	1	BL90002401520	(1)
23	X1	Terminal board	HONEYWELL	SK4	4mm ²	19	YE60000403200	
24		Terminal board	HONEYWELL	GK5PE	4mm ²	5	YE60000403500	
25		Terminal board	HONEYWELL	SK2.5	2.5mm ²	11	YE60002503200	
机型版本 Ver.E								
Notes:(1) Materials not in the control box; (2)Optional dew-point monitor(-D); (3) Optional thermal overload relay.								
				Version	Title		Drawing NO.	
				G	SDD-160U/120H		SDD-160U/120H-CE-400V-G-5	
				Approved by	Elec. Parts List 1		Scale	Page 5
				Date	20191111		Standard	Totally 6 Pages
				Checked by			Voltage	3φ400V
				Modify date			Frequency	50Hz
Mark	Before modification	After modification	Modified by	20191111				8



信易电热机械股份有限公司
Shini Plastics Technologies, Inc.

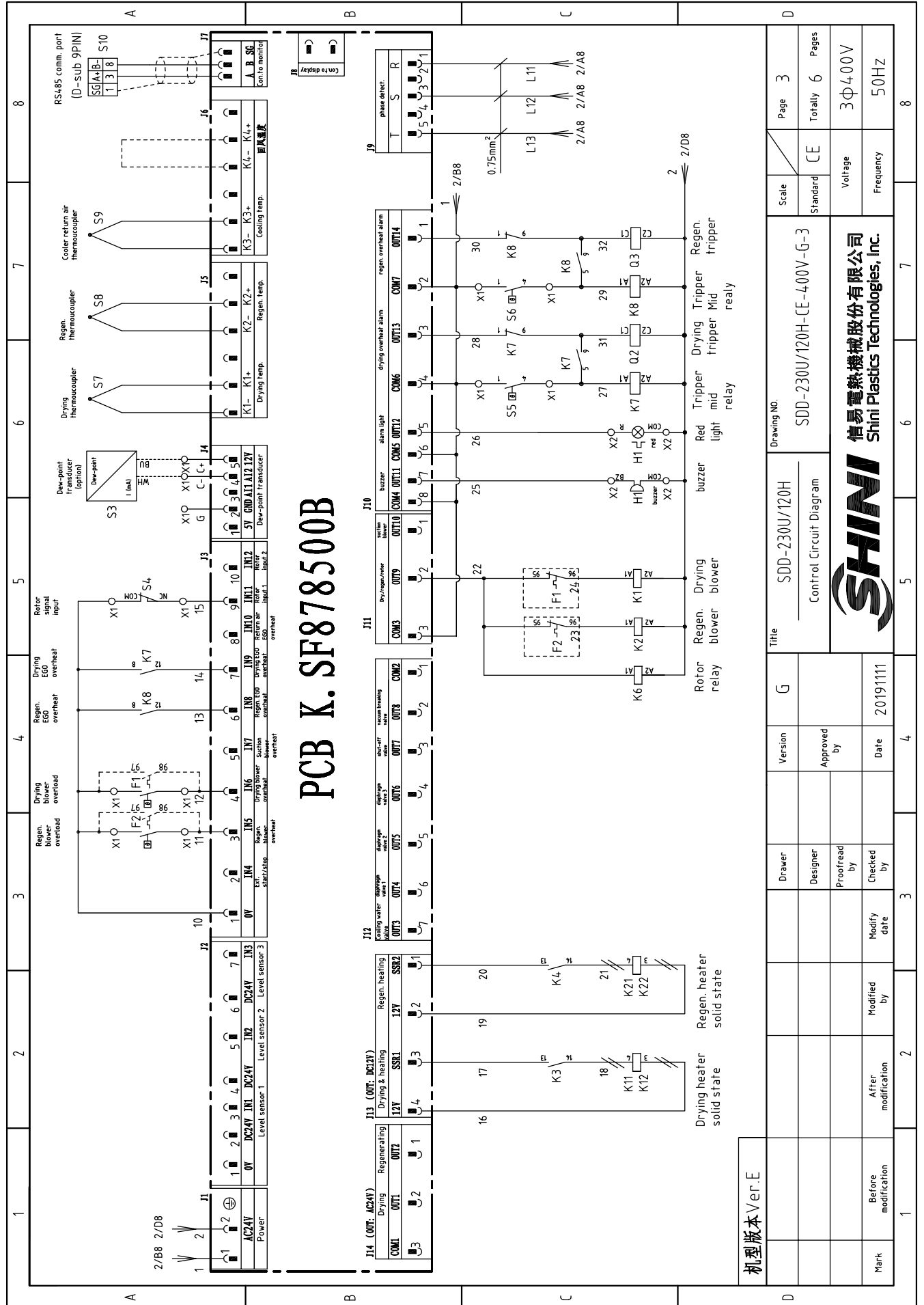


1/A8	L11	1	2	3	4	5	6	7	8
1/A8	L12	1	2	3	4	5	6	7	8
1/A8	L13	1	2	3	4	5	6	7	8
3/B7	3/A1	1	2	3	4	5	6	7	8
3/D7	3/A1	1	2	3	4	5	6	7	8

机型版本 Ver.E	1	2	3	4	5	6	7	8
Mark	Before modification	After modification	Modified by	Modify date	Checked by	Proofread by	Designer	Drawer
Version	G	Approved by		Date	2019/11/11			
Title	SDD-230U/120H	Main Circuit Diagram 2		G				
Drawing NO.	SDD-230U/120H-CE-400V-G-2	SHINI						
Scale	CE	Voltage		Frequency		Page 2		
Standard	CE	3 ϕ 400V		50HZ		Totally 6 Pages		

信易電熱機械股份有限公司
Shini Plastics Technologies, Inc.

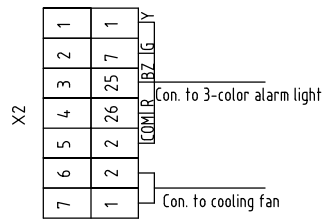
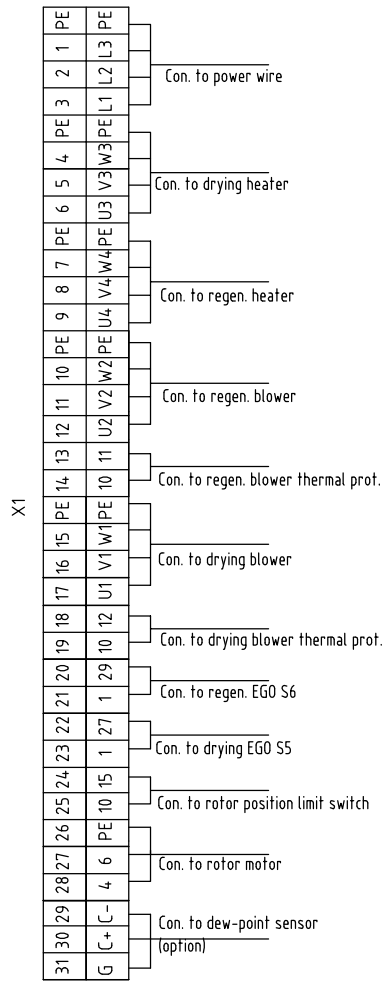
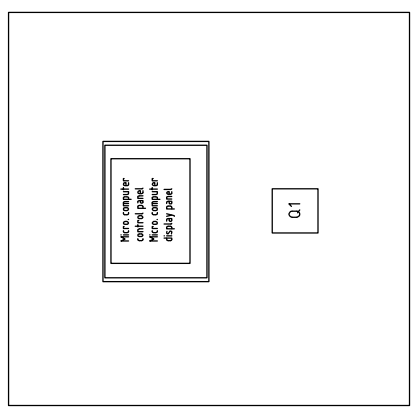
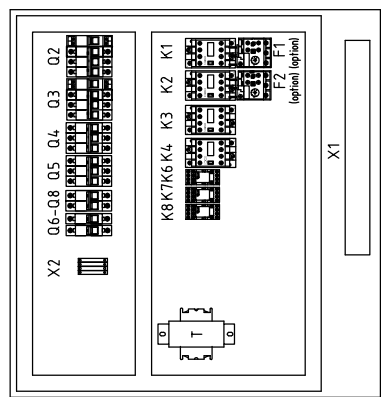
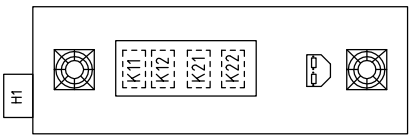
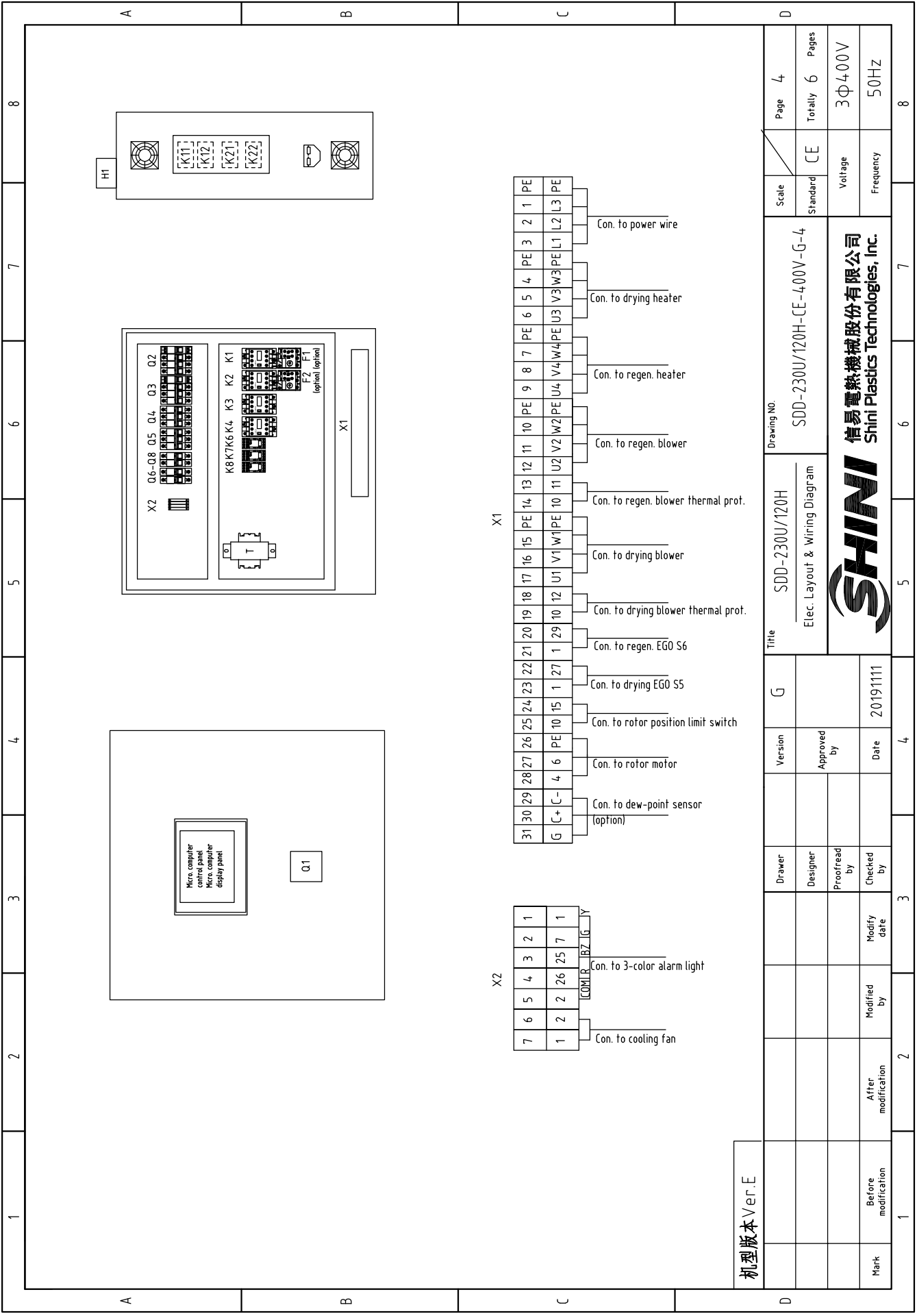
PCB K. SF878500B



机型版本 Ver.E

1	2	3	4	5	6	7	8
Title		SDD-230U/120H		Drawing NO.		SDD-230U/120H-CE-400V-G-3	
Version		G		Standard		CE	
Approved by				Scale		Page 3	
Proofread by				Voltage		3Φ400V	
Checked by		20191111		Frequency		50HZ	
Modified by				Totally		6 Pages	
After modification				Voltage		3Φ400V	
Mark				Frequency		50HZ	



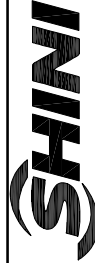


机型版本 Ver.E

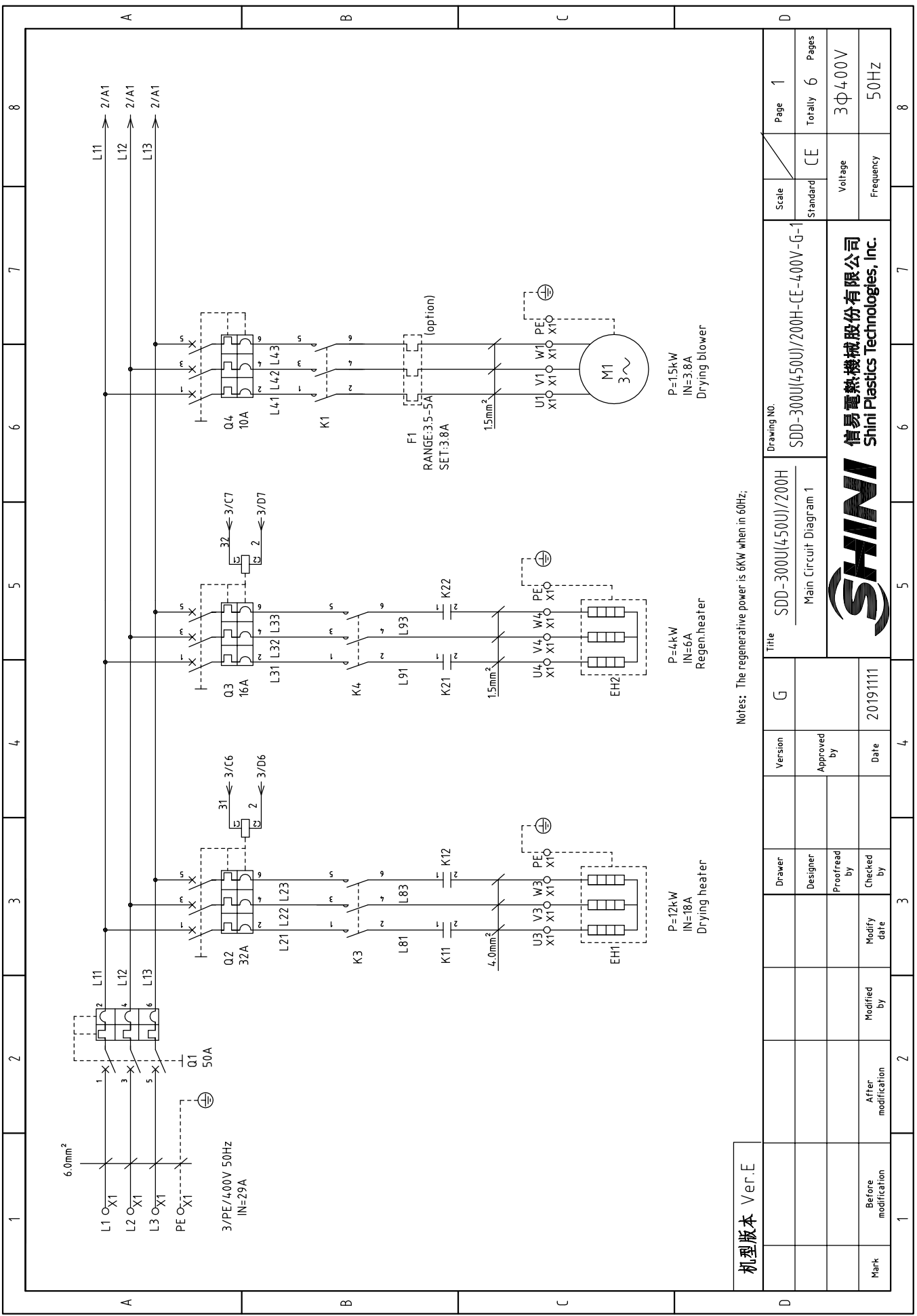
Scale	Page	4
	Totally	6
Standard	Standard	CE
	Voltage	3Φ400V
Frequency	Frequency	50Hz
	Drawing NO.	
Title		SDD-230U/120H
Elec. Layout & Wiring Diagram		
Version	G	
Approved by		
Date	20191111	
Drawer		
Designer		
Proofread by		
Checked by		
Modify date		
Modified by		
After modification		
Mark	Before modification	
1	2	3
4	5	6
7	8	



1	2		3	4	5	6	7	8
No.	Symbol	Name	Manufacturer	Type	Specification	Number	Material number	Remark
	1	Q1	EATON	P1-25/EA/SVB	25A	1	YE10125250000	
	2	Q2	TECO	BM-63C 3P	16A	1	YE40301603000	
	3	Q3	TECO	BM-63C 3P	10A	1	YE40301003000	
A	4	Q4 Q5	TECO	BM-63C 3P	6A	2	YE40300603000	
	5	Q6	TECO	BM-63C/2003S 3A 2P	3A	1	YE40200203000	
	6	Q7 Q8	TECO	BM-63C/1003S 3A 1P	3A	2	YE40100203000	
	7	Excitation release	YIJIN	MX	24V 50/60Hz	2	YE40024000000	
	8	K1 K2 K3 K4	SIEMENS	3RT6015-1AB01-24VAC	24V 50/60Hz	4	YE00601502500	
	9	K6 K7 K8	Honeywell	GR-2C-AC24V	Base PGR-2C-E	3	YE03022400300	
	10	K11 K12 K21 K22	FOTEK	KSR-40DA-H	40A/480VAC/4-32VDC	4	YE03404003200	
B	11	F1	SIEMENS	3RU6116-1DB0	2.2-3.2A	1	YE01160220000	(3)
	12	F2	SIEMENS	3RU6116-0HB0	0.55-0.8A	1	YE01161550000	(3)
	13	T	JUUXIN	IN=400V/415V OUT=24V/230V	120VA 350MA	1	YE70040007300	
	14	PCB	PUMP	K.SF878500B	AC24V	1	YE81878500300	
	15	S3	SUTO	217-OEM	IN=24VDC OUT=4-20mA	1	YE90021700100	(1)(2)
	16	S4	CHOYI	CYLXW-5/11G2	AC380V DC220V	1	---	(1)
	17	S5 S6	EGO	(55.13262.160)	115-320℃	2	---	(1)
	18	S7,S8,S9	SHINI	---	K	3	---	(1)
C	19	S10	YUYUN	---	485ToDsub_V23	1	YE90048501200	
	20	Shell RS485(SAL-700G-A-19)ver.0	BINCHEG	---	---	1	YR40048500000	
	21	FM	SUNON	12x12CM/24V/50/60HZ	24VAC 40W	1	---	(1)
	22	H1	SHINI	Priority	24V 50/60Hz	1	BL90002401520	(1)
	23	X1	HONEYWELL	SK4	4mm ²	19	YE600000403200	
	24	Terminal board	HONEYWELL	GK5PE	4mm ²	5	YE600000403500	
	25	Terminal board	HONEYWELL	SK2.5	2.5mm ²	11	YE60002503200	
机型版本 Ver.E								
Notes:(1) Materials not in the control box; (2)Optional dew-point monitor(-D); (3) Optional thermal overload relay.								
D			Drawer	Version	Title	Drawing NO.		Page
			Designer	G	SDD-230U/120H	SDD-230U/120H-CE-400V-G-5		5
			Proofread by	Approved by	Elec. Parts List 1		Standard	Totally
			Checked by	Date			CE	6
Mark			Before modification	Modified by	Modify date	Voltage		Pages
						3Φ 400V		
						Frequency		50Hz
1			2		3		4	
5			6		7		8	



信易電熱機械股份有限公司
Shini Plastics Technologies, Inc.



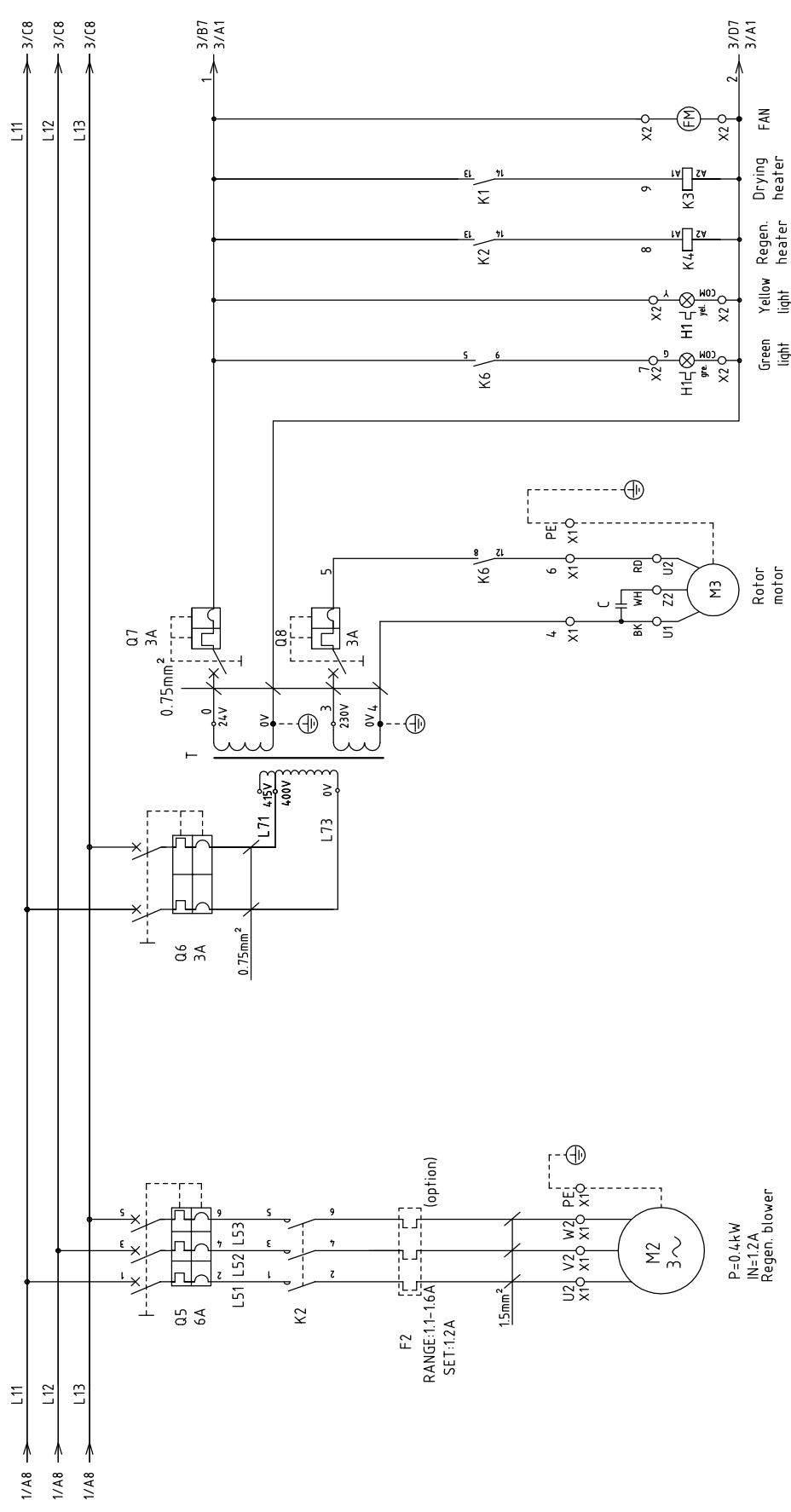
机型版本 Ver.E

Notes: The regenerative power is 6KW when in 60Hz;

D	Scale	Page 1	Standard	CE	Voltage 3φ400V	Frequency 50Hz
		Totally 6				
Title		SDD-300U(450U)/200H		Drawing NO.		
Version		G		SDD-300U(450U)/200H-CE-400V-G-1		
Designer		Approved by		Main Circuit Diagram 1		
Proofread by		Date		20191111		
Checked by		Modified date		4		
After modification		Modified by		3		
Before modification		Mark		1		



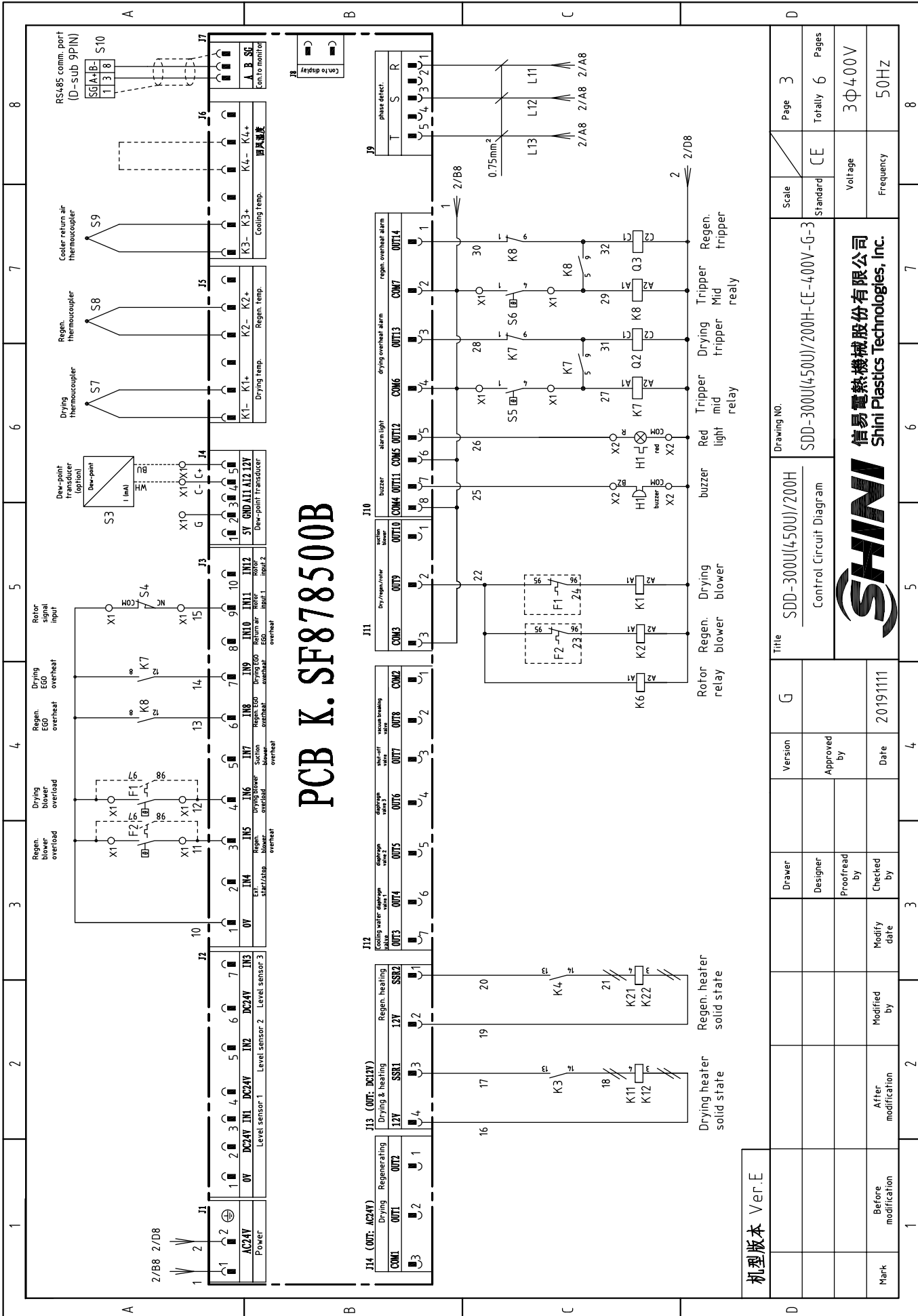
信易電熱機械股份有限公司
Shini Plastics Technologies, Inc.



机型版本 Ver.E

1	2	3	4	5	6	7	8
Title				Drawing NO.			
SDD-300U(450U)/200H				SDD-300U(450U)/200H-CE-400V-G-2			
Main Circuit Diagram 2				Standard			
Version				Scale			
G				CE			
Approved by				Page 2			
Date				Totally 6 Pages			
20191111				Voltage			
Checked by				3Φ400V			
Modified by				Frequency			
After modification				50HZ			
Before modification				8			
Mark				8			





PCB K. SF878500B

机型版本	Ver.E
Mark	Before modification
Modified by	
Modify date	20191111
Checked by	
Proofread by	
Designer	
Drawer	

Title	SDD-300U(450U)/200H
Version	G
Approved by	
Date	20191111
Control Circuit Diagram	

Scale	Standard
CE	
Page	3
Totally	6
Voltage	3Φ400V
Frequency	50HZ

Drawing NO.

SDD-300U(450U)/200H-CE-400V-G-3

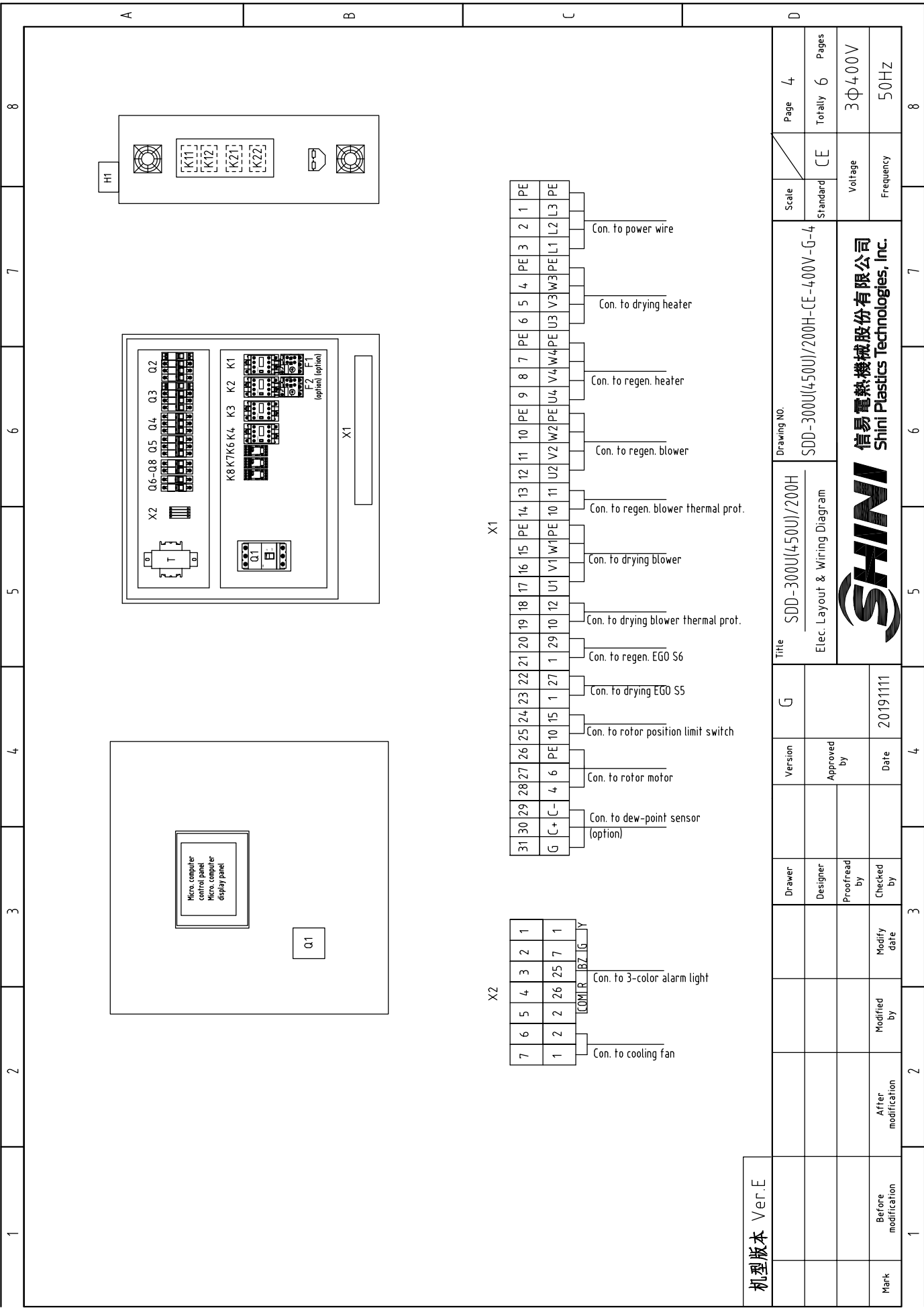


信易电热机械股份有限公司
Shini Plastics Technologies, Inc.

Mark	Before modification
Modified by	
Modify date	20191111
Checked by	
Proofread by	
Designer	
Drawer	

Title	SDD-300U(450U)/200H
Version	G
Approved by	
Date	20191111
Control Circuit Diagram	

Scale	Standard
CE	
Page	3
Totally	6
Voltage	3Φ400V
Frequency	50HZ



机型版本 Ver.E

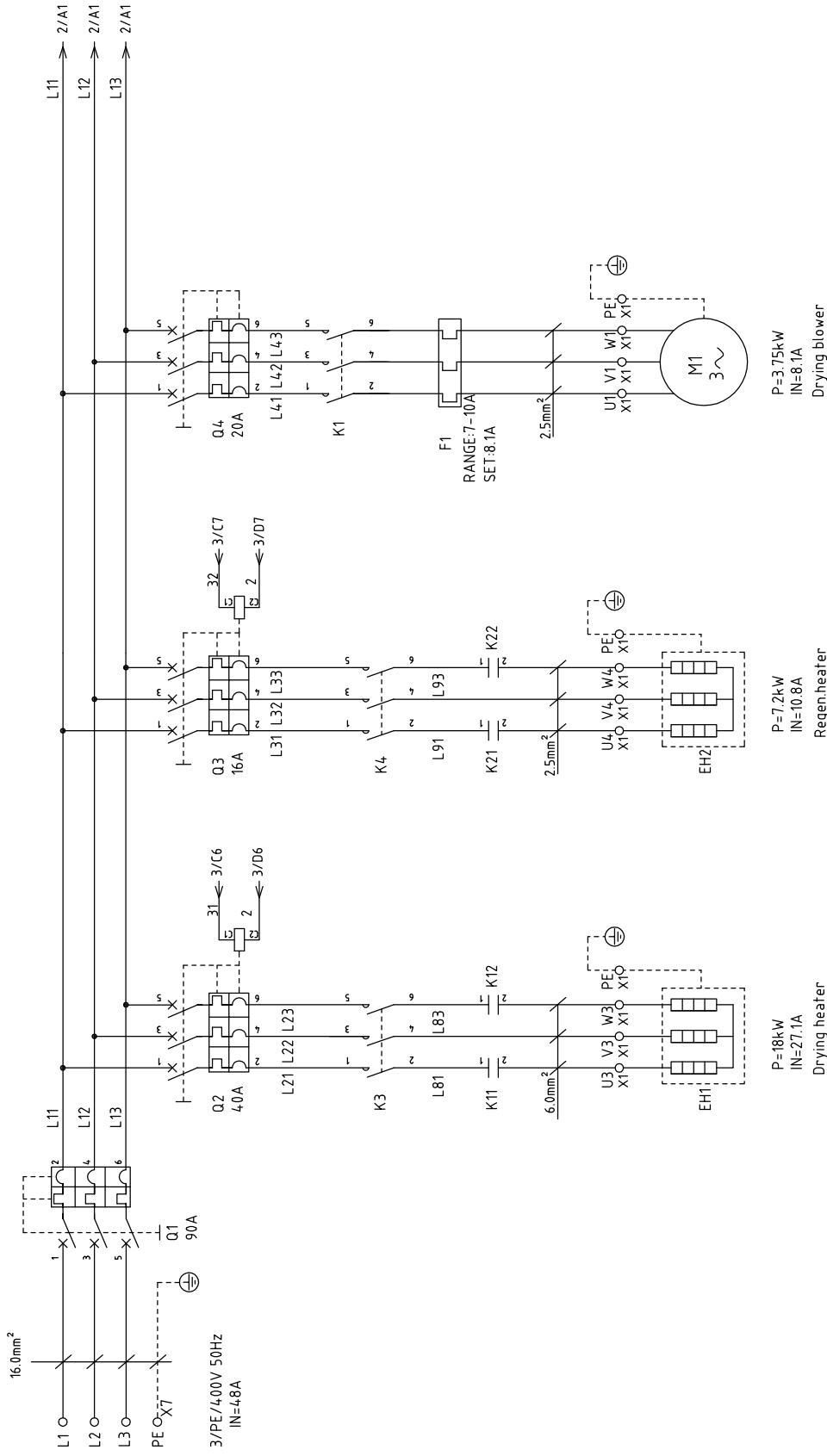
Mark	Before modification	Modified by	Modified date	Checked by	Date	Version	G	Title	SDD-300U(450U)/200H Elec. Layout & Wiring Diagram	Drawing NO.	SDD-300U(450U)/200H-CE-400V-G-4	Scale	Standard	Page	4
	After modification				20191111	Approved by							CE	Totally	6
														Voltage	3Φ400V
														Frequency	50HZ
1	2	3	4	5	6	7	8								



信易電熱機械股份有限公司
Shini Plastics Technologies, Inc.

1	2		3	4	5	6	7	8	
NO.	Symbol	Name	Manufacturer	Type	Specification	Number	Material number	Remark	
A	1	Q1	ABB	A1A125TMF50	50A	1	YE4.1105200000		
	2	Q2	TECO	BM-63C 3P	32A	1	YE4.0303203000		
	3	Q3	TECO	BM-63C 3P	16A	1	YE4.0301603000		
	4	Q4	TECO	BM-63C 3P	10A	1	YE4.0301003000		
	5	Q5	TECO	BM-63C 3P	6A	1	YE4.0300603000		
	6	Q6	TECO	BM-63C/2003S 3A 2P	3A	1	YE4.0200203000		
	7	Q7 Q8	TECO	BM-63C/1003S 3A 1P	3A	2	YE4.0100203000		
B	8	Excitation release	YI/JIN	MX	24V 50/60Hz	2	YE4.0024.000000		
	9	K1 K2 K3 K4	SIEMENS	3RT6015-1AB01-24VAC	24V 50/60Hz	4	YE00601502500		
	10	K6 K7 K8	Honeywell	GR-2C-AC24V	Base PGR-2C-E	3	YE030224.00300		
	11	K11 K12 K21 K22	FOTEK	KSR-40DA-H	40A/480VAC/4-32VDC	4	YE034.04.003200		
	12	F1	SIEMENS	3RU6116-1FB0	3.5-5A	1	YE01160350000	(3)	
	13	F2	SIEMENS	3RU6116-1AB0	1.1-1.6A	1	YE01160110000	(3)	
	14	T	Sensor transformer	JIUXIN	IN=400V/415V OUT=24V/230V	1	YE7004.0007300		
	15	PCB	Micro-computer control plate+micro-computer display panel/JPB	PUMP	K.SF878500B	AC24V	1	YE81878500300	
	16	S3	Dew-point transducer	SUTO	217-0EM	IN=24VDC OUT=4-20mA	1	YE90021700100	(1)(2)
	17	S4	Micro switch	CHOYI	CYLXW-5/11G2	AC380V DC220V	1	---	(1)
	18	S5 S6	Assembly EGO	EGO	(55.13262.160)	115-320℃	2	---	(1)
C	19	S7,S8,S9	Thermocouple	SHINI	K	3	---	(1)	
	20	S10	Comm. interface plate RS-485 (Dsub-9pin connector)	YUYUN	485ToDsub_V23	1	YE9004.8501200		
	21		Shell RS485(SAL-700G-A-19)ver.0	BINCHEG	---	1	YR4.004.8500000		
22	H1	3-color alarm light (red,gre,yel+buzzer)	SHINI	Priority	24V 50/60Hz	1	BL900024.01520	(1)	
23	X1	Terminal board	HONEYWELL	SK6	6mm ²	19	YE60000603200		
24		Terminal board	HONEYWELL	GK6PE	6mm ² PE	1	YE60000603500		
25		Terminal board	HONEYWELL	SK4	4mm ²	16	YE600004.03200		
机型版本 Ver.E Notes:(1) Materials not in the control box; (2)Optional dew-point monitor(-D); (3) Optional thermal overload relay.									
				Drawer	Version	G	Title SDD-300U(450U)/200H		
				Designer	Approved by	Drawing NO. SDD-300U(450U)/200H-CE-4.00V-G-5			
				Proofread by	Standard CE				
				Checked by	Date	Voltage		Page 5	
				Modified by	Modify date	Frequency		Totally 6 Pages	
Mark	Before modification	After modification	20191111			3Φ4.00V		50HZ	

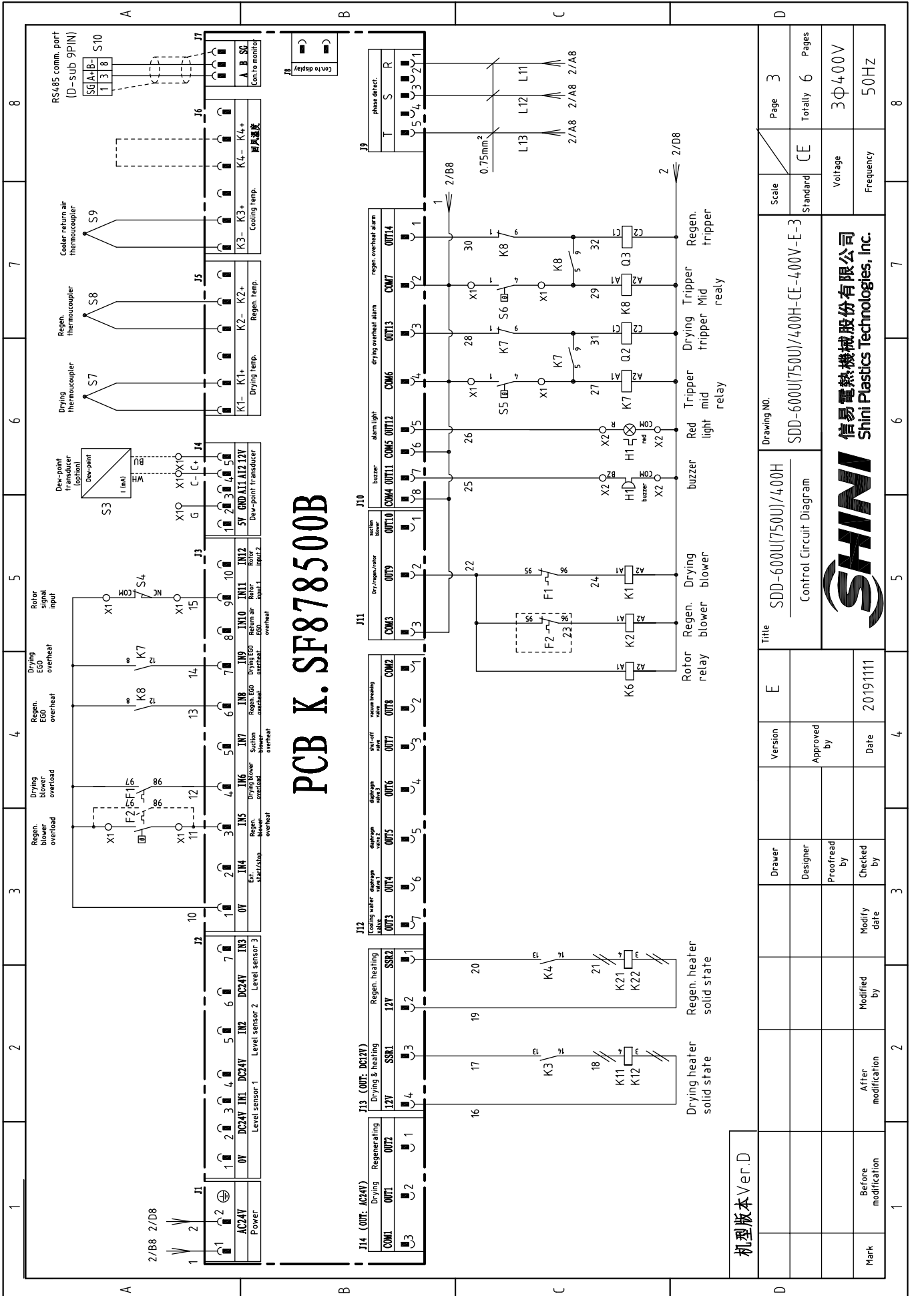




机型版本 Ver.D

Title		SDD-600U(750U)/400H		Drawing NO.		SDD-600U(750U)/400H-CE-400V-E-1		Scale		Page 1	
Version		E		Main Circuit Diagram 1		Standard		CE		Totally 6 Pages	
Approved by								Voltage		3Φ400V	
Date		20191111						Frequency		50HZ	
Mark		Before modification		Modified by		Modify date				1	
Checked by										2	
Proofread by										3	
Designer										4	
Drawer										5	
P=18kW IN=27.1A Drying heater										6	
P=7.2kW IN=10.8A Regen.heater										7	
P=3.75kW IN=8.1A Drying blower										8	





PCB K. SF878500B

机型版本 Ver.D	Scale	Page
	Standard	3
	Voltage	3Φ400V
	Frequency	50HZ

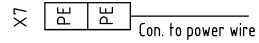
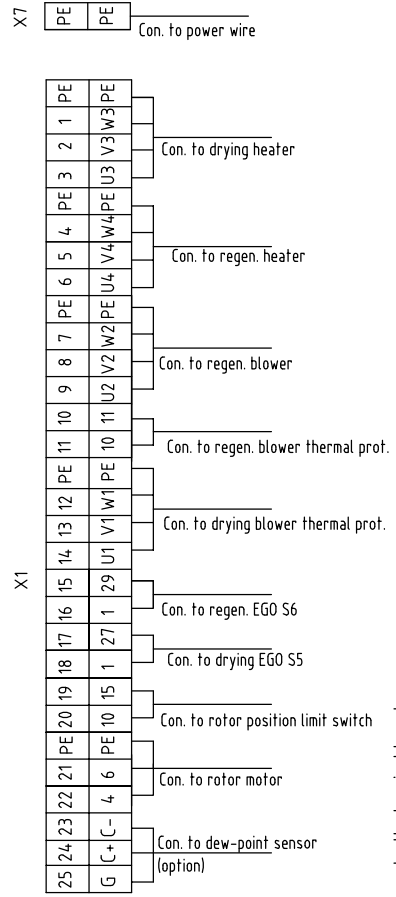
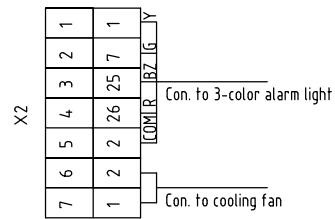
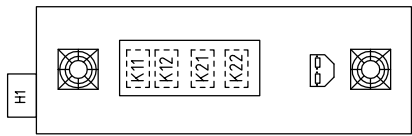
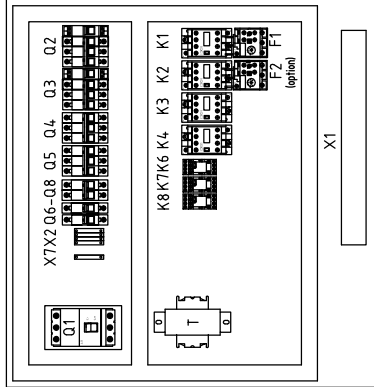
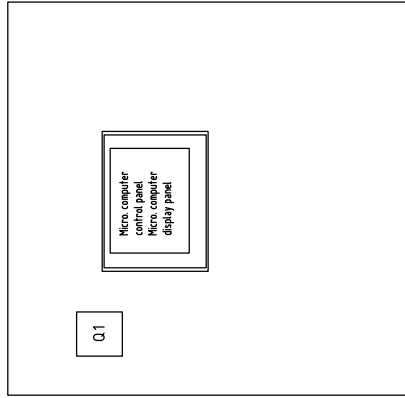
机型版本 Ver.D	Version	E
Designer	Approved by	
Proofread by	Date	20191111
Checked by	Modify date	
Mark	Before modification	
	After modification	
	Modified by	
	Modified date	

Title		SDD-600U(750U)/400H
Drawing NO.		SDD-600U(750U)/400H-CE-4.00V-E-3
Control Circuit Diagram		
Standard	CE	
Totally	6	Pages
Scale	Standard	Page 3



信易电热机械股份有限公司
Shini Plastics Technologies, Inc.

1 2 3 4 5 6 7 8

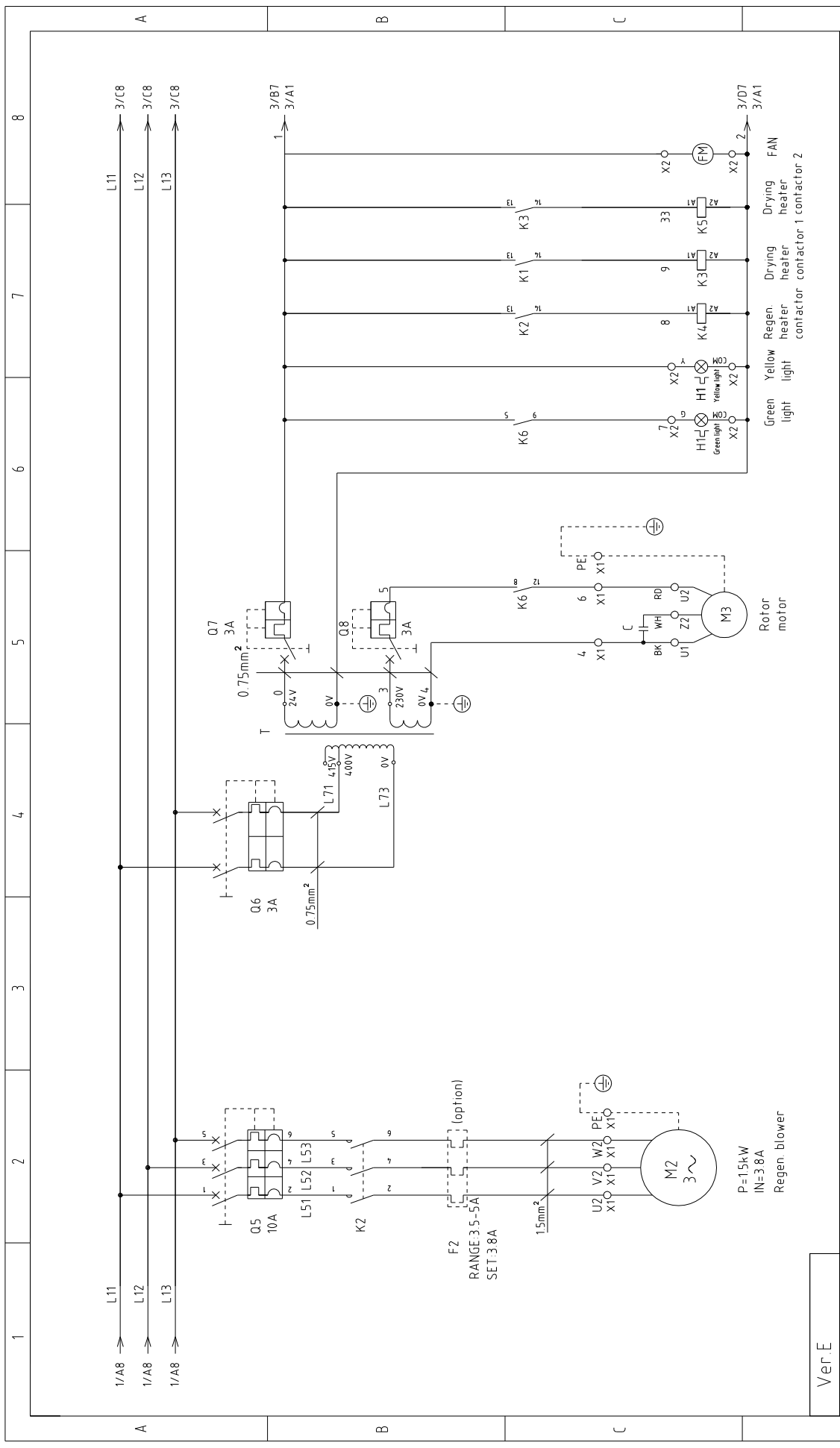


初型版本 Ver.D

Note: Power cable can directly connected to the breaker interlock which not pass by the terminal board.

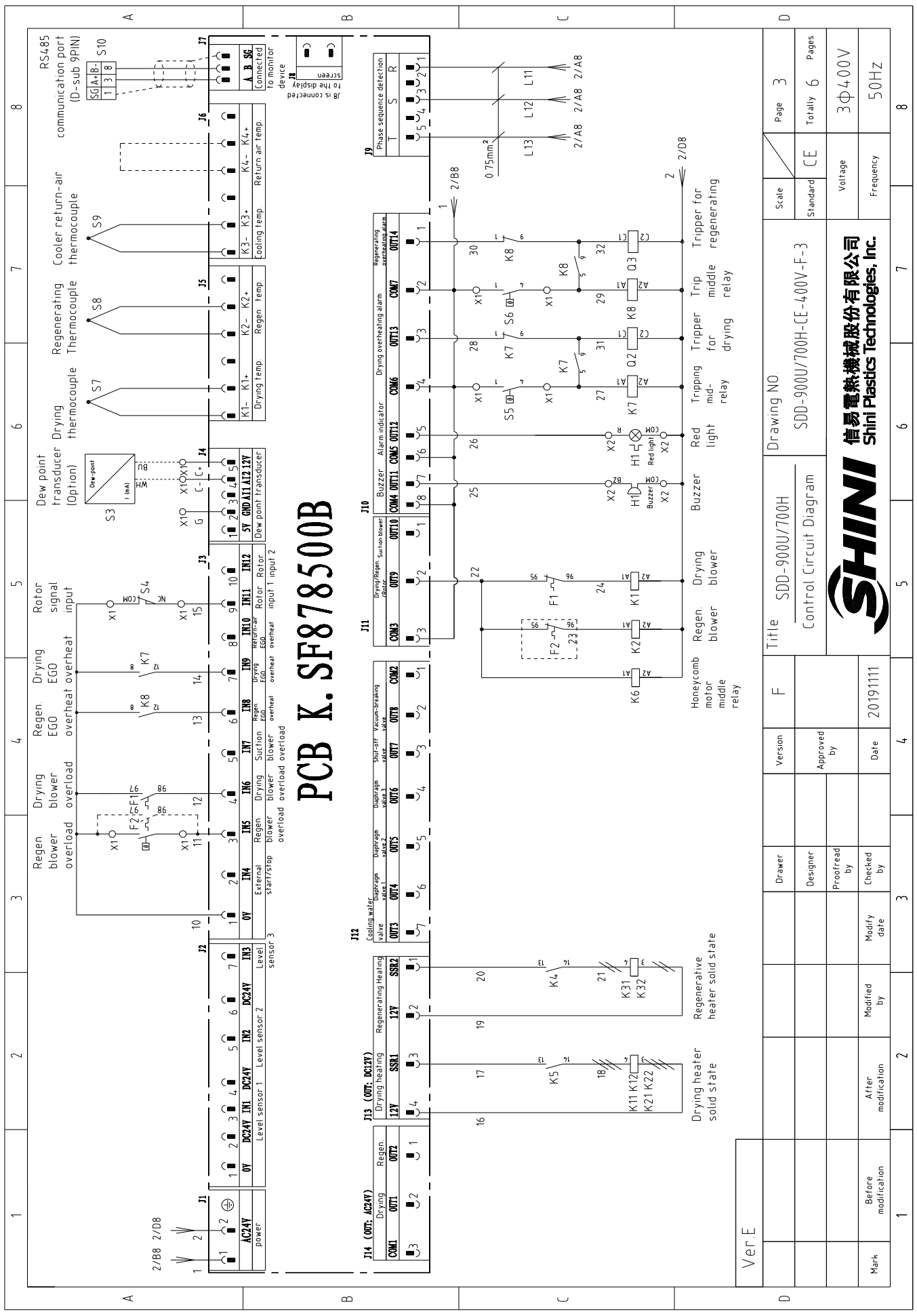
Mark	Before modification	Modified by	Modify date	Date	20191111	Checked by	Approved by	Version	E	Title	SDD-600U(750U)/400H		Scale	Page 4
	After modification	Modified by	Modify date								SDD-600U(750U)/400H-CE-400V-E-4			
Elec. Layout & Wiring Diagram											Standard	Pages		
SHINI 信易電熱機械股份有限公司 Shini Plastics Technologies, Inc.											Voltage	3Φ400V		
SDD-600U(750U)/400H-CE-400V-E-4											Frequency	50Hz		

1 2 3 4 5 6 7 8



Ver E	Title		SDD-900U/700H		Drawing NO.		SDD-900U/700H-CE-400V-F-2		Scale		CE		Page 2	
	Main Circuit Diagram 2		F		Version		Approved by		Designer		Proofread by		Totally 6 Pages	
Mark	Before modification	After modification	Modified by	Modify date	Checked by	Date	20191111	SHINI 信易電熱機械股份有限公司 Shini Plastics Technologies, Inc.		Voltage		3Φ400V		
								Frequency		50HZ		8		

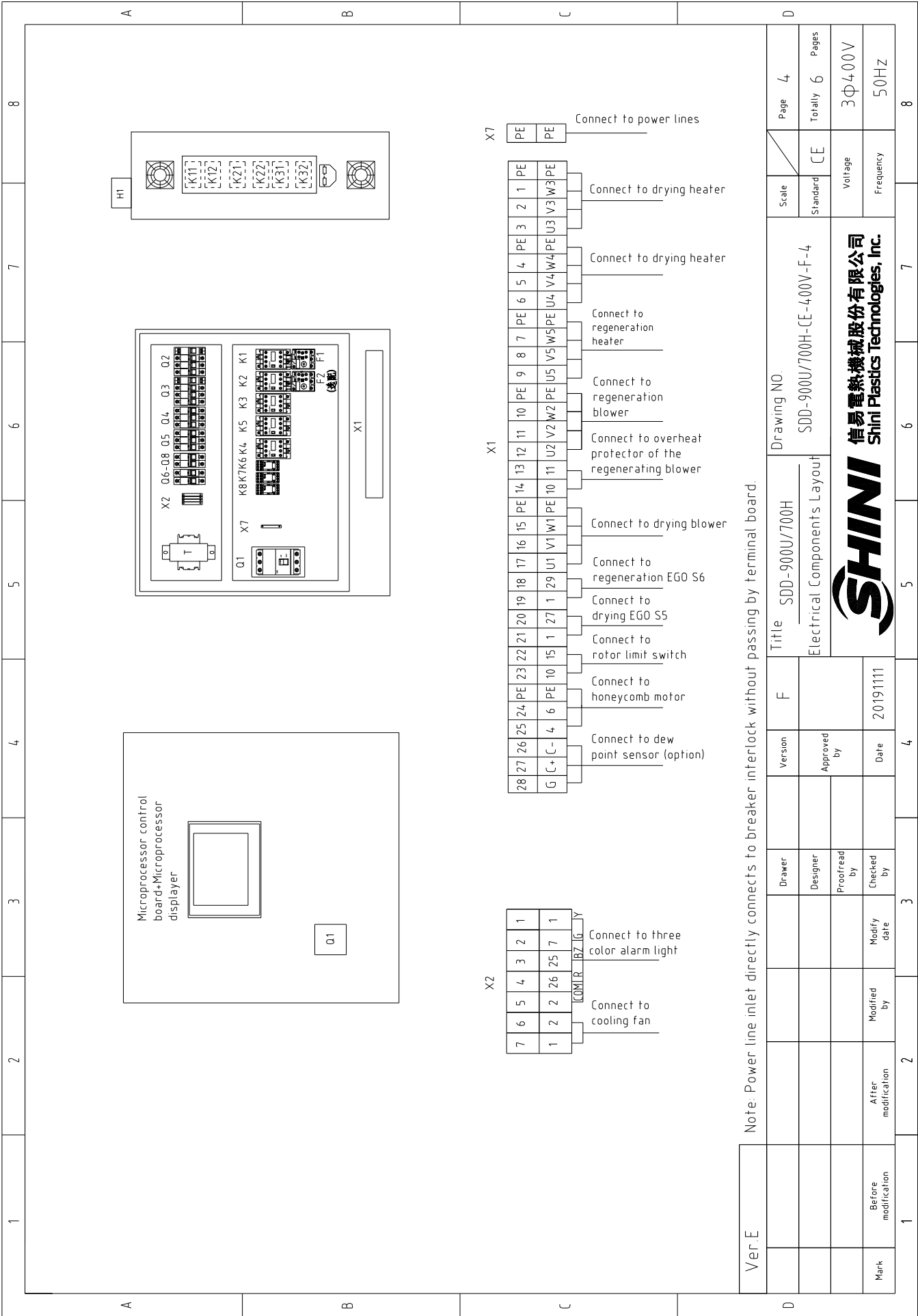
PCB K. SF878500B



Ver.E

Title	SDD-900U/700H		Scale	Page 3	
	Control Circuit Diagram			Standard	CE
Drawing NO.			SDD-900U/700H-CE-4.00V-F-3		
Version			F		
Approved by			Date		
Checked by			20191111		
Modified by			Date		
After modification			Date		
Before modification			Date		
Mark			Date		
Voltage			3Φ4.00V		
Frequency			50HZ		
Standard			CE		
Totally			6		
Pages			3		





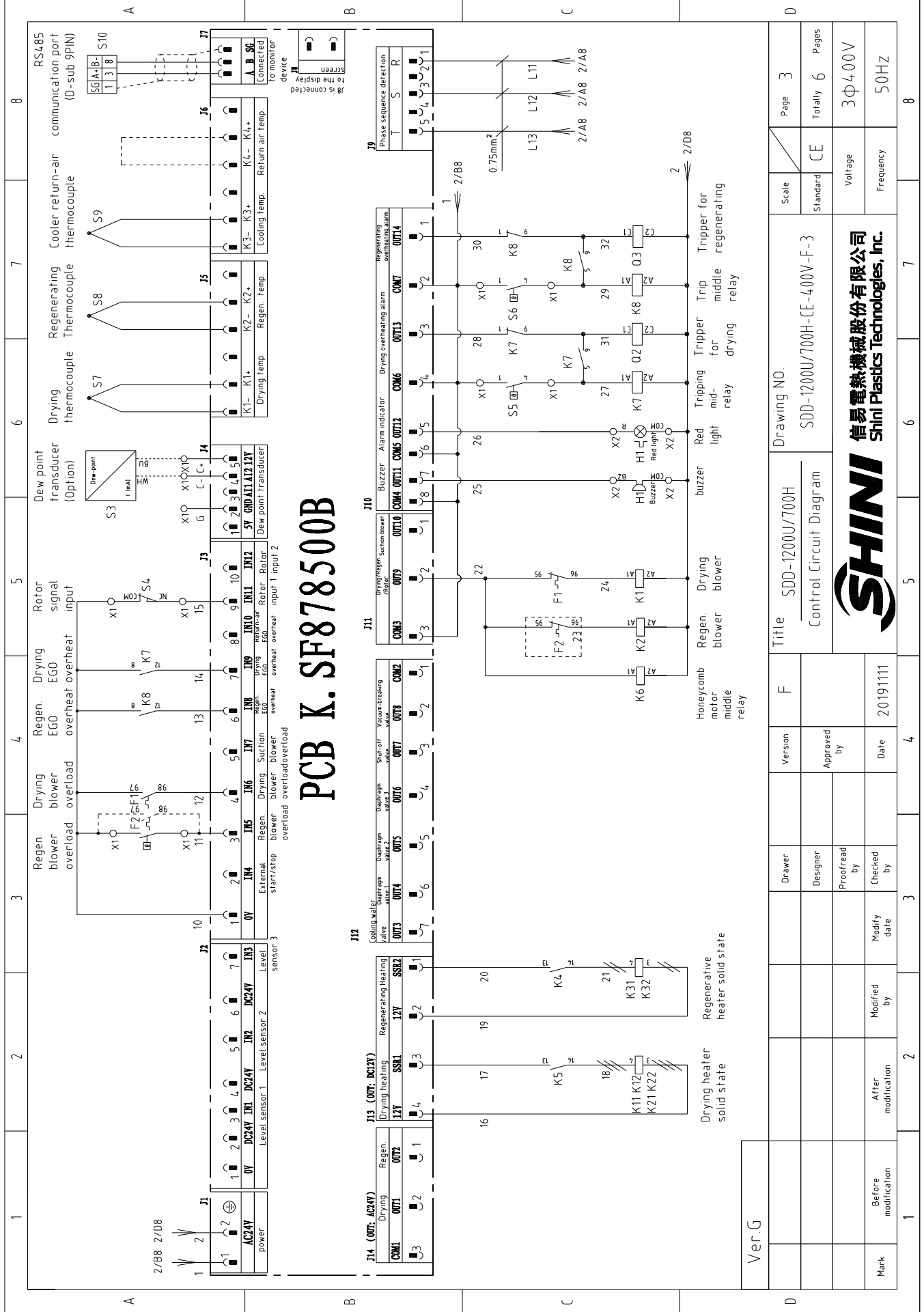
Ver.E	Note: Power line inlet directly connects to breaker interlock without passing by terminal board.				Title		Drawing NO.		Scale	Page
	Drawer	Version	F	SDD-900U/700H	Electrical Components Layout		SDD-900U/700H-CE-400V-F-4	Standard	CE	Totally 6 Pages
Mark	Designer	Approved by	20191111	SHINI		信易電熱機械股份有限公司 Shini Plastics Technologies, Inc.		Voltage	3Φ400V	Frequency
Before modification	Modified by	Modify date	4	SHINI		SHINI		Frequency	50HZ	8

1	2		3	4	5	6	7	8
NO.	Symbol	Name	Manufacturer	Type	Specification	Number	Material number	Remark
1	Q1	Break Interlock	ABB	A1A125TMF100	100A	1	YE41110200000	
2	Q2	Circuit-breaker	TECO	BM-63C 3P	50A	1	YE40305003000	
3	Q3	Circuit-breaker	TECO	BM-63C 3P	20A	1	YE40302003000	
4	Q4	Circuit-breaker	TECO	BM-63C 3P	50A	1	YE40305003000	
5	Q5	Circuit-breaker	TECO	BM-63C 3P	10A	1	YE40301003000	
6	Q6	Circuit-breaker	TECO	BM-63C/2003S 3A 2P	3A	1	YE40200203000	
7	Q7 Q8	Circuit-breaker	TECO	BM-63C/1003S 3A 1P	3A	2	YE40100203000	
8		Excitation release	YIJIN	MX	24V 50/60Hz	2	YE40024000000	
9	K1	Contact	SIEMENS	3RT6026-1AC20-24VAC	24V 50/60Hz	1	YE00602602600	
10	K2	Contact	SIEMENS	3RT6015-1AB01-24VAC	24V 50/60Hz	1	YE00601502500	
11	K3 K4 K5	Contact	SIEMENS	3RT6023-1AC20-24VAC	24V 50/60Hz	3	YE00602301100	
12	K6 K7 K8	Middle relay	Honeywell	GR-2C-AC24V	base PGR-2C-E	3	YE03022400300	
13	K11 K12 K21 K22 K31 K32	Solid state relay	FOTEK	KSR-40DA-H	40A/480VAC/4-32VDC	6	YE03404003200	
14	F1	Overload relay	SIEMENS	3RU6126-4AB0	11-16A	1	YE01260110000	
15	F2	Overload relay	SIEMENS	3RU6116-1FB0	3.5-5A	1	YE01160350000	(3)
16	T	Sensor transformer	JIUXIN	IN=400V/415V OUT=24V/230V	230VA 350MA	1	YE70040007500	
17	PCB	Microprocessor control board+ Microprocessor displayer	PUMP	K.SF878500B	AC24V	1	YE81878500300	
18	S3	Dew-point transducer	SUTO	217-0EM	IN=24VDC OUT=4-20mA	1	YE90021700100	(1)(2)
19	S4	Micro switch	CHOYI	CYLXW-5/11G2	AC380V DC220V	1	---	(1)
20	S5 S6	EGO assembly	EGO	(55.13262.160)	115-320°C	2	---	(1)
21	S7,S8,S9	Thermocouple	SHINI	---	K	3	---	(1)
22	S10	Communication interface board RS-485 (double Dsub-9pin connector)	YUYUN	---	485ToDsub_V23	1	YE90048501200	
23		Shell RS485(SAL-700G-A-1910)	BINCHENG	---	---	1	YR40048500000	
24	H1	Three color alarm light (Red, green, yellow lights + buzzer)	SHINI	Priority(height increased)	24V 50/60Hz	1	BL90242201520	(1)
25	X7	Terminal board	HONEYWELL	GK16PE	16mm ² PE	1	YE60001603500	
Ver E								
Notes: (1)Means it's not the material inside the control box. (2)Optional dew point transducer(-D)(3)Optional thermal overload relay.								
D			Title SDD-900U/700H		Drawing NO.		Page 5	
			Electrical Components List 1		SDD-900U/700H-CE-400V-F-5		Totally 6 Pages	
Mark			Before modification		After modification		Voltage 3Φ400V	
			Modified by		Date 20191111		Frequency 50HZ	
1			2	3	4	5	6	7
								8



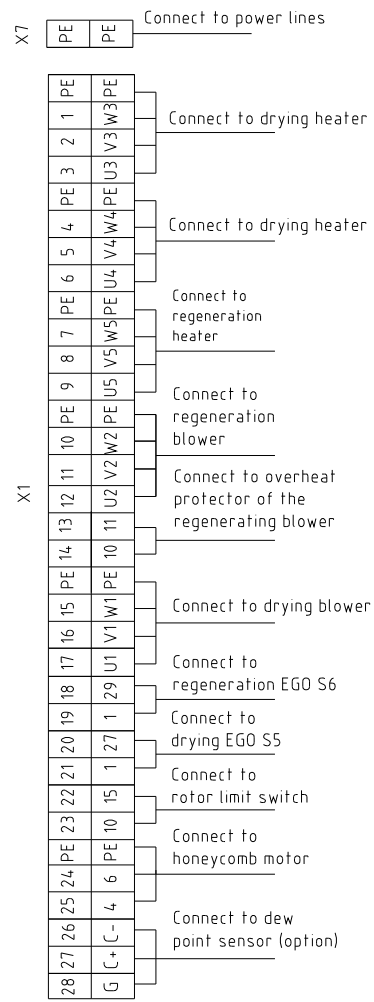
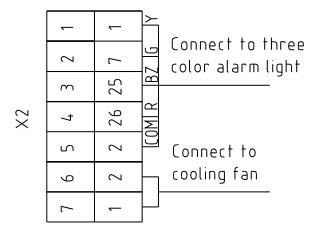
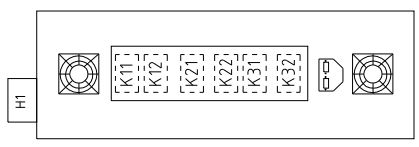
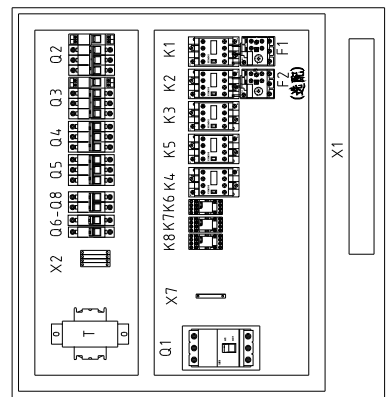
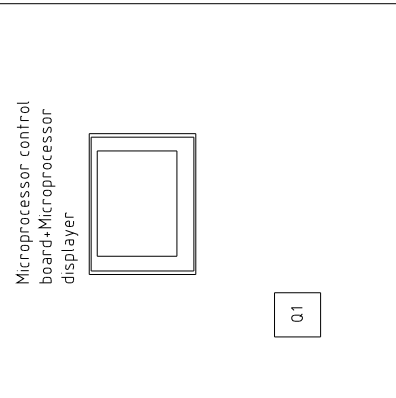
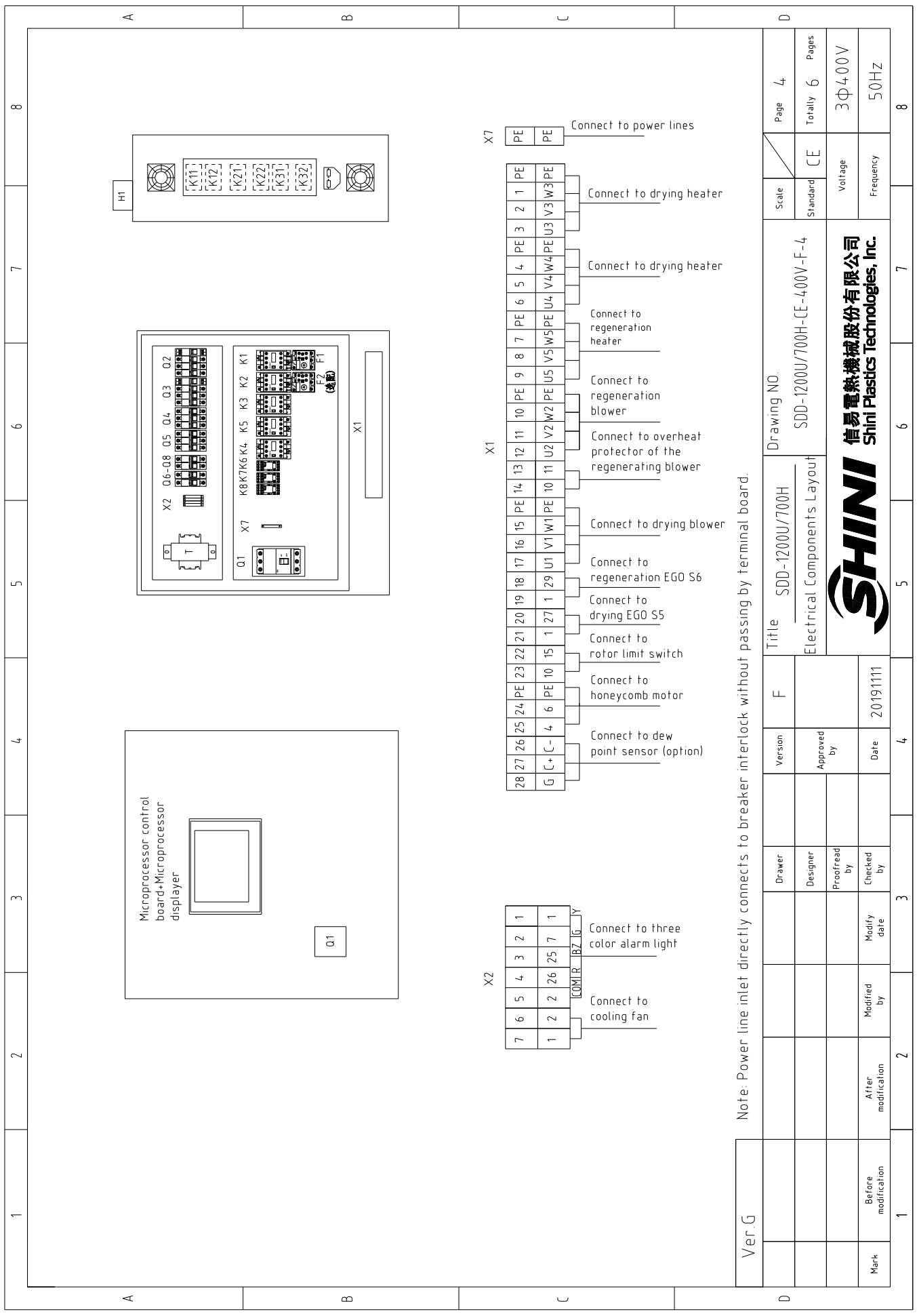
信易電熱機械股份有限公司
Shini Plastics Technologies, Inc.

PCB K. SF878500B



Ver.G	Title	SDD-1200U/700H		Drawing NO.	SDD-1200U/700H-CE-4.00V-F-3		Page	3		
		Control Circuit Diagram			Standard			CE		Totally 6 Pages
Mark	Before modification	Date	20191111		Voltage	3Φ4.00V		Frequency	50HZ	
	Modified by		After modification			Frequency			50HZ	





Note: Power line inlet directly connects to breaker interlock without passing by terminal board.

Ver. G	Title		Drawing NO.		Scale	Page
	SDD-1200U/700H		SDD-1200U/700H-CE-400V-F-4		Standard	Totally 6
	Electrical Components Layout		CE		Voltage	Pages
					Frequency	3Φ400V
Mark	Before modification	Modified by	Modify date	20191111	4	8
		Approved by	Date			
	Drawer	Designer	Proofread by	Checked by		



1	2	3	4	5	6	7	8	
NO.	Symbol	Name	Manufacturer	Type	Specification	Number	Material number	Remark
1	Q1	Break Interlock	ABB	A1A125TMF100	100A	1	YE41110200000	
2	Q2	Circuit-breaker	TECO	BM-63C 3P	50A	1	YE40305003000	
3	Q3	Circuit-breaker	TECO	BM-63C 3P	20A	1	YE40302003000	
4	Q4	Circuit-breaker	TECO	BM-63C 3P	50A	1	YE40305003000	
5	Q5	Circuit-breaker	TECO	BM-63C 3P	10A	1	YE40301003000	
6	Q6	Circuit-breaker	TECO	BM-63C/2003S 3A 2P	3A	1	YE40200203000	
7	Q7 Q8	Circuit-breaker	TECO	BM-63C/1003S 3A 1P	3A	2	YE40100203000	
8		Excitation release	YIJIN	MX	24V 50/60Hz	2	YE40024000000	
9	K1	Contact	SIEMENS	3RT6026-1AC20-24VAC	24V 50/60Hz	1	YE00602602600	
10	K2	Contact	SIEMENS	3RT6015-1AB01-24VAC	24V 50/60Hz	1	YE00601502500	
11	K3 K4 K5	Contact	SIEMENS	3RT6023-1AC20-24VAC	24V 50/60Hz	3	YE00602301100	
12	K6 K7 K8	Mid-relay	Honeywell	GR-2C-AC24V	base PGR-2C-E	3	YE03022400300	
13	K11 K12 K21 K22 K31 K32	Solid state relay	FOTEK	KSR-40DA-H	40A/480VAC/4-32VDC	6	YE03404003200	
14	F1	Overload relay	SIEMENS	3RU6126-4AB0	11-16A	1	YE01260110000	
15	F2	Overload relay	SIEMENS	3RU6116-1FB0	3-5-5A	1	YE01160350000	(3)
16	T	Sensor transformer	JIUXIN	IN=400V/4.15V OUT=24V/230V	230VA 350MA	1	YE700400007500	
17	PCB	Microprocessor control board+ Microprocessor displayer	PUMP	K SF878500B	AC24V	1	YE81878500300	
18	S3	Dew-point transducer	SUTO	217-0EM	IN=24VDC OUT=4-20mA	1	YE90021700100	(1)(2)
19	S4	Micro switch	CHOYI	CYLXW-5/11G2	AC380V DC220V	1	---	(1)
20	S5 S6	EGO assembly	EGO	(55.13262.160)	115-320°C	2	---	(1)
21	S7,S8,S9	Thermocouple	SHINI	---	K	3	---	(1)
22	S10	Communication interface board RS-485 (double Dsub-9pin connector)	YUYUN	---	485ToDsub_V23	1	YE90048501200	
23		Shell RS485(SAL-700G-A-19)0	BINCHENG	---	---	1	YR40048500000	
24	H1	Three color alarm light (Red, green, yellow lights + buzzer)	SHINI	Priority(height increased)	24V 50/60Hz	1	BL90242201520	(1)
25	X7	Terminal board	HONEYWELL	GK16PE	16mm ² PE	1	YE60001603500	
Ver G								
Notes: (1)Means it's not the material inside the control box. (2)Optional dew point transducer(-D) (3)Optional thermal overload relay.								
			Version	F	Title		Drawing NO.	
			Designer	Approved by	SDD-1200U/700H		SDD-1200U/700H-CE-400V-F-5	
			Proofread by		Electrical Components List 1		Scale	Page 5
			Checked by	Date			Standard	Totally 6 Pages
			Modified by	20191111			CE	Voltage
			Modify date				Frequency	3Φ400V
								50HZ
								8



信易電熱機械股份有限公司
Shini Plastics Technologies, Inc.

