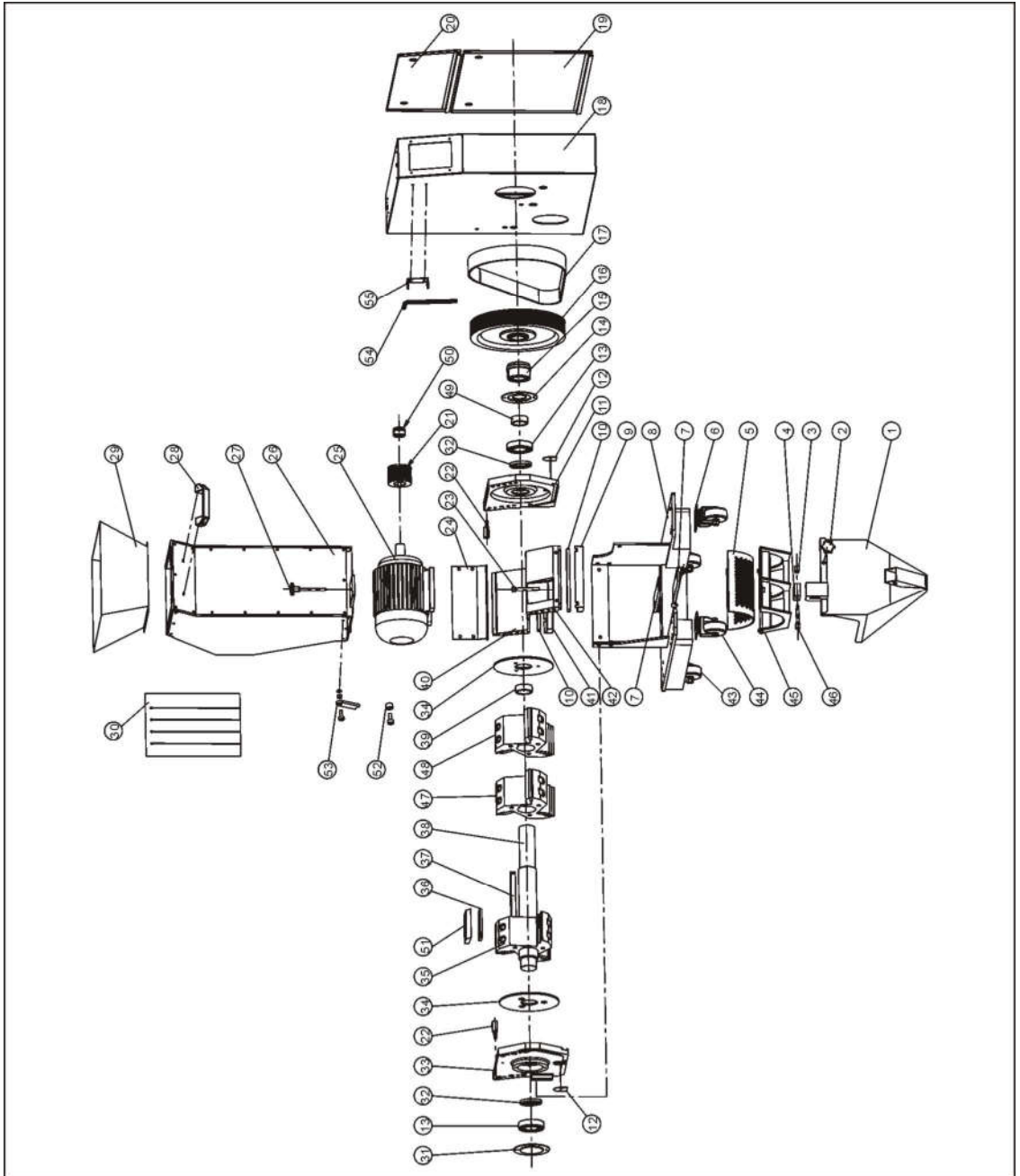


1. Assembly Drawing (SG-1621N)



Note: Please refer to material list 2 about the parts code.

2. Parts List (SG-1621N)

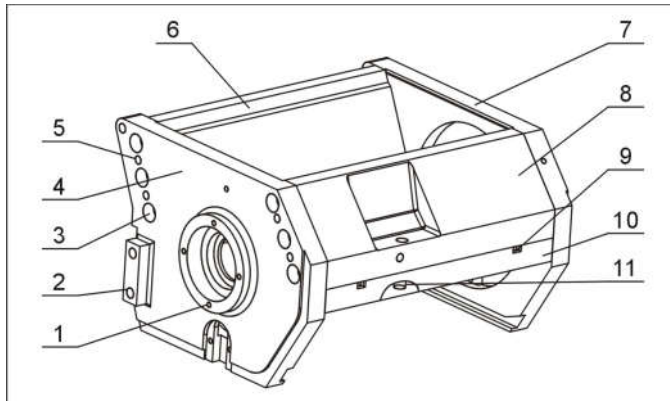
No.	Name	Part No.	No.	Name	Part No.
1	Storage box	-	26	Feeding box	-
2	Knob	YR40083500000	27	Star assembly of feeding box	BH10204202010
3	Safety switch knob	BH10024200010	28	Handle*	BW20012000140
4	Safety switch installation board	BH10204202310	29	Feeding mouth	-
5	Screen (Φ4)**	BL50162111620	30	Material fender	-
	Screen (Φ5)**	BL50162150020	31	Left bearing cover plate	-
	Screen (Φ6)**	BL50162111720	32	Oil seal	YR80554200000
	Screen (Φ7)**	BL50162103820	33	Left bearing plate	BW30162804120
	Screen (Φ10)**	BL50162131920	34	Material fender(65Mn)	YW45162850000
5	Screen (Φ12)**	BL50162131020	35	Blade rest(1)	BW30162811610
	Castor	YW03000300000	36	Rotating balde**	YW42162840000
7	Motor adjusting plate	-	37	Flat key 10X199	BH10162110010
8	Base	-	38	Shaft	BH55162100010
9	Front pressure block	BH10162104010	39	Sleeve	BH10161500010
10	Sustain brace**	YW42162100000	40	Back block	BH10162600010
11	Right end plate	BH10161600010	41	Pressure block of back block	BH10162500010
12	Bearing cover	-	42	Front block	BW30162104020
13	Bearing 6207DD*	YW11620700000	43	Fixed castor 3"	YW03000300300
14	Right bearing cover plate	-	44	Movable castor 3"	YW03000300200
15	Taper sleeve 3020-35	BW30001605320	45	Screen rest	-
16	Large belt wheel	BW30001605120	46	Safety switch installation shaft	BH10204300010
17	Poly V-belt 20PJ50 *	YW30205000000	47	Blade rest 1	BW30001612910
18	Outer shell	-	48	Blade rest (2)	BW30162111510
19	Outer cover board of shell	-	49	Sleeve 1	BH10162823010
20	Upper cover board of shell	-	50	Taper sleeve 1210-28	BW30001605420
21	Small belt pulley	BW30001605220	51	Press block for rotating blade	BH11162700010
22	Rotating shaft	BH10204100010	52	Limit stop sleeve	BH10162804110
23	Hex socket screw M12x80	YW61128000000	53	Limit stop	-
24	Check plate for storage box	-	54	Hex key M10	JT10010000100
25	Motor (1.5kW)	YM10710600300	55	Hex key fixing board	-

* means possible broken parts.

** means easy broken part. and spare backup is suggested.

Please confirm the version of manual before placing the purchase order to guarantee that the item number of the spare part is in accordance with the real object.

3. Cutting Chamber

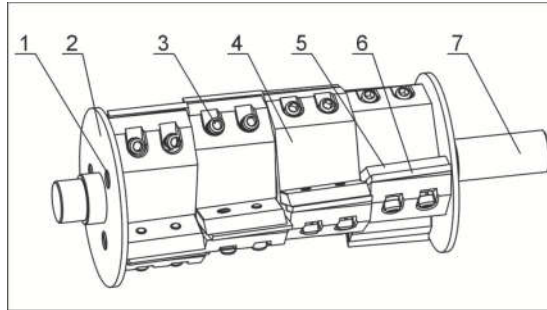


Note: Please refer to material list 4 about the parts code.

4. Cutting Chamber Parts List

No.	Name	Quantity
1	Cross socket head cap screw M5×10	12
2	Inner hexagonal column bolt M10×20	5
3	Inner hexagonal column bolt M10×35	12
4	Left bearing holder	1
5	Flexible column pin 8×35	8
6	Back block	1
7	Right bearing holder	1
8	Front block	1
9	Inner hexagonal set screw M5×16 (SG-20N)	4
	Inner hexagonal set screw M4×16 (SG-16N)	4
10	Pressure block of front block	1
11	Inner hexagonal column bolt M10×25 (SG-20N)	6-8
	Inner hexagonal column bolt M8×25 (SG-16N)	6-8

5. Staggered Blade Rest

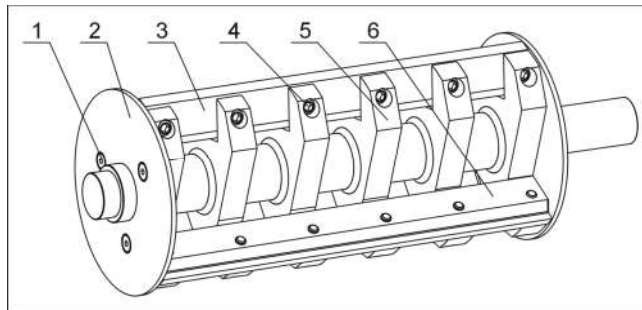


Note: Please refer to material list 6 about the parts code.

6. Staggered Blade Rest Parts List

No.	Name	Quantity
1	Inner hexagonal countersunk bolt M8×12	6
2	Material fender	2
3	Inner hexagon cylindrical screw M8×30	18-24-30
4	Blade rest	3-4-5
5	Blade fastener	9-12-15
6	Rrotating blade	9-12-15
7	Main shaft	1

7. Paddle Blade Rest

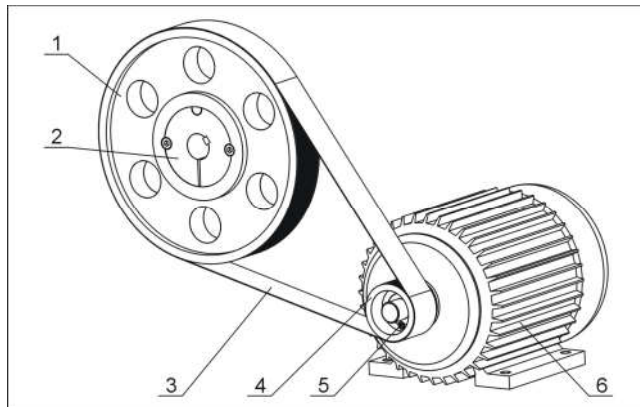


Note: Please refer to material list 8 about the parts code.

8. Paddle Blade Rest Parts List

No.	Name	Quantity
1	Inner hexagonal countersunk bolt M8×12	6
2	Material fender	2
3	Rotating blade	3
4	Inner hexagon cylindrical screw M10×35	12-18
5	Main shaft	1
6	Blade pressing plate	3

9. Transmission Parts

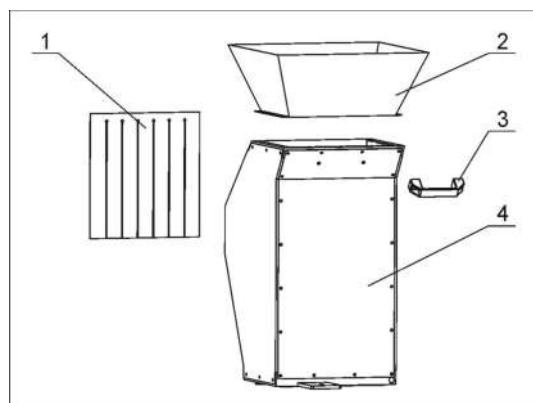


Note: Please refer to material list 10 about the parts code.

10. Transmission Parts Parts List

No.	Name	Quantity
1	Big belt pulley	1
2	Taper sleeve	1
3	V belt 20 PJ 53" (SG-20N)	1
	V belt 20 PJ 50" (SG-16N)	1
4	Motor belt pulley	1
5	Taper sleeve	1
6	Motor	1

11. Feed Port, Feed Box and Material Check Plate

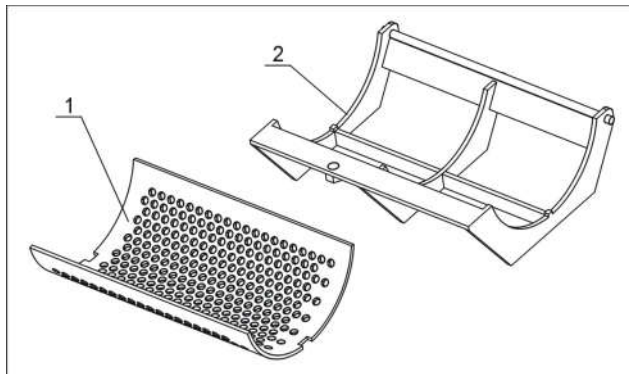


Note: Please refer to material list 12 about the parts code.

12. Feed Port, Feed Box and Material Check Plate Parts List

No.	Name	Quantity
1	Material fender	1
2	Feed opening	1
3	Handle	1
4	Feed box	1

13. Screen and Screen Frame

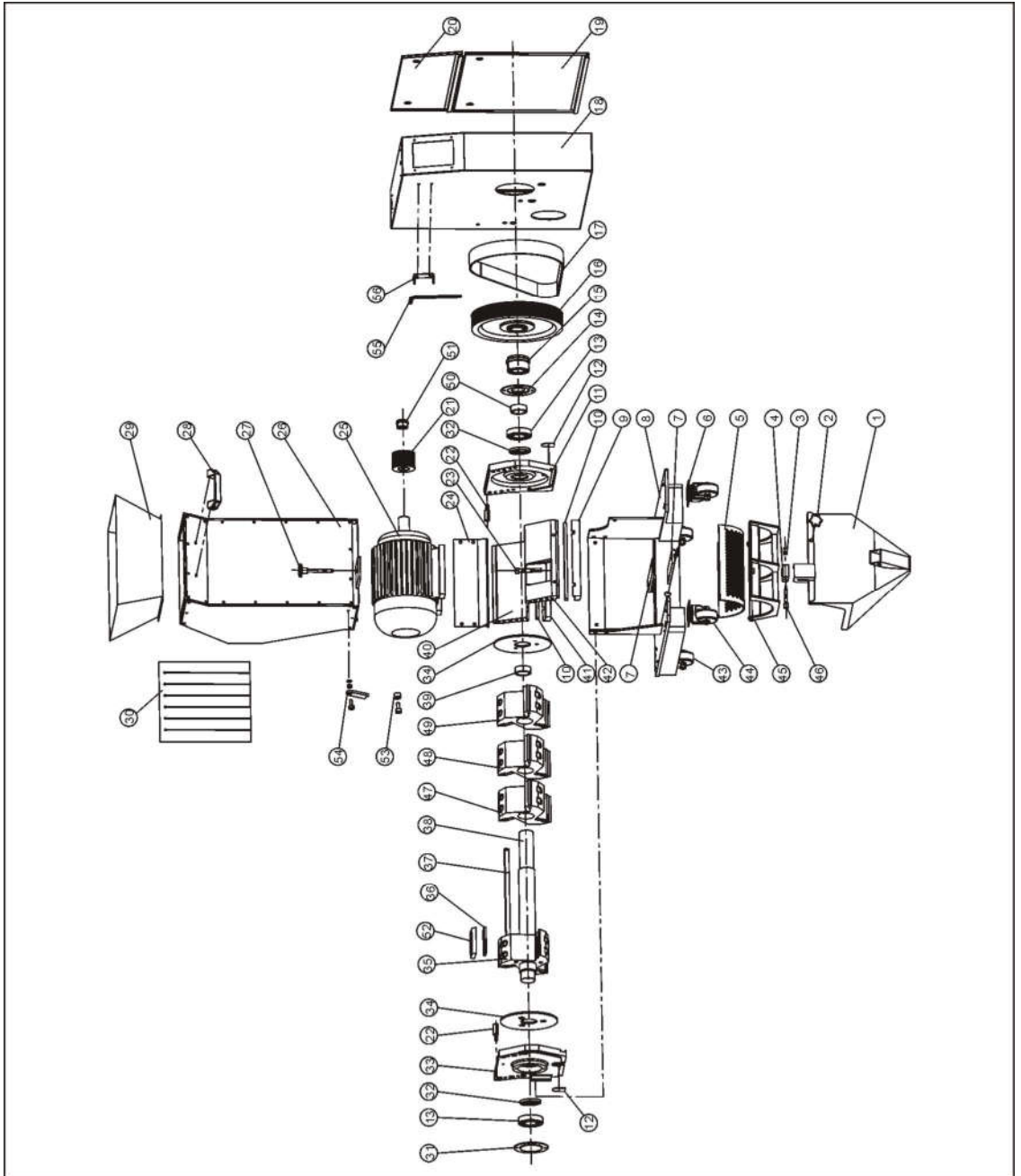


Note: Please refer to material list 14 about the parts code.

14. Screen and Screen Frame Parts List

No.	Name	Quantity
1	Screen	1
2	Screen bracket	1

1. Assembly Drawing (SG-1628N)



Note: Please refer to material list 2 about the parts code.

2. Parts List (SG-1628N)

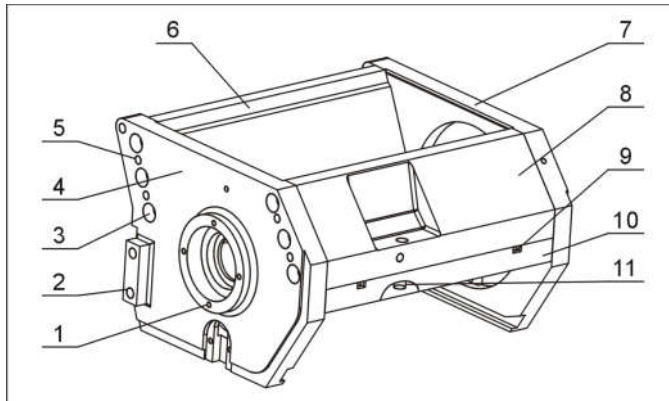
No.	Name	Part No.	No.	Name	Part No.
1	Storage box	-	27	Star assembly of feeding box	BH10204202010
2	Knob	YR40083500000	28	Handle*	BW20012000140
3	Safety switch knob	BH10024200010	29	Feeding mouth	-
4	Safety switch installation board	BH10204202310	30	Material fender	-
5	Screen (Φ4)**	BL50162821820	31	Left bearing cover plate	-
	Screen (Φ5)**	BL50162860020	32	Oil seal	YR80554200000
	Screen (Φ6)**	BL50162821920	33	Left bearing plate	BW30162804120
	Screen (Φ8)**	BL50162821020	34	Material fender (65Mn)	YW45162850000
	Screen (Φ10)**	BL50162821120	35	Blade rest (1)	BW30162811610
5	Screen (Φ12)**	BL50162821220	36	Rotating balde**	YW42162840000
	6	Castor	YW03000300000	37	Flat key 10X268
7	Motor adjusting plate	-	38	Shaft	BH55162600010
8	Base	-	39	Sleeve	BH10161500010
9	Front pressure block	BH10162804010	40	Back block	BH10162900010
10	Sustain brace**	YW41162820000	41	Pressure block of back block	BH10160280010
11	Right end plate	BH10161600010	42	Front block	BW30162804020
12	Bearing cover	-	43	Fixed castor 3"	YW03000300300
13	Bearing 6207DD*	YW11620700000	44	Movable castor 3"	YW03000300200
14	Right bearing cover plate	-	45	Screen rest	-
15	Taper sleeve 3020-35	BW30001605320	46	Safety switch installation shaft	BH10204300010
16	Large belt wheel	BW30001605120	47	Blade rest 1	BW30001612910
17	Poly V-belt 20PJ50 *	YW30205000000	48	Blade rest 2	BW30001613010
18	Outer shell	-	49	Blade rest (2)	BW30162811710
19	Outer cover board of shell	-	50	Sleeve 1	BH10162823010
20	Upper cover board of shell	-	51	Taper sleeve 1210-28	BW30001605420
21	Small belt pulley	BW30001605220	52	Press block for rotating blade	BH11162700010
22	Ratating shaft	BH10204100010	53	Limit stop sleeve	BH10162804110
23	Hex socket screw M12x80	YW61128000000	54	Limit stop	-
24	Check plate for storage box	-	55	Hex key M10	JT10010000100
25	Motor (2.2kW)	YM10692900000	56	Hex key fixing board	-
26	Feeding box	-			

* means possible broken parts.

** means easy broken part. and spare backup is suggested.

Please confirm the version of manual before placing the purchase order to guarantee that the item number of the spare part is in accordance with the real object.

3. Cutting Chamber

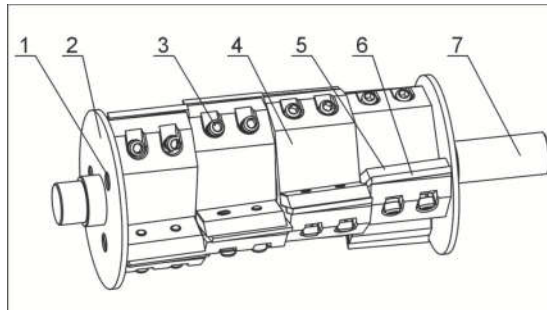


Note: Please refer to material list 4 about the parts code.

4. Cutting Chamber Parts List

No.	Name	Quantity
1	Cross socket head cap screw M5×10	12
2	Inner hexagonal column bolt M10×20	5
3	Inner hexagonal column bolt M10×35	12
4	Left bearing holder	1
5	Flexible column pin 8×35	8
6	Back block	1
7	Right bearing holder	1
8	Front block	1
9	Inner hexagonal set screw M5×16 (SG-20N)	4
	Inner hexagonal set screw M4×16 (SG-16N)	4
10	Pressure block of front block	1
11	Inner hexagonal column bolt M10×25 (SG-20N)	6-8
	Inner hexagonal column bolt M8×25 (SG-16N)	6-8

5. Staggered Blade Rest

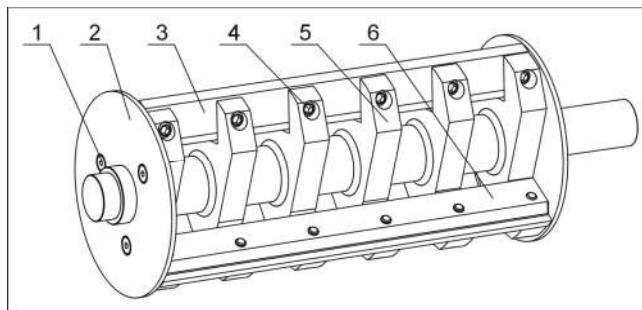


Note: Please refer to material list 6 about the parts code.

6. Staggered Blade Rest Parts List

No.	Name	Quantity
1	Inner hexagonal countersunk bolt M8×12	6
2	Material fender	2
3	Inner hexagon cylindrical screw M8×30	18-24-30
4	Blade rest	3-4-5
5	Blade fastener	9-12-15
6	Rrotating blade	9-12-15
7	Main shaft	1

7. Paddle Blade Rest

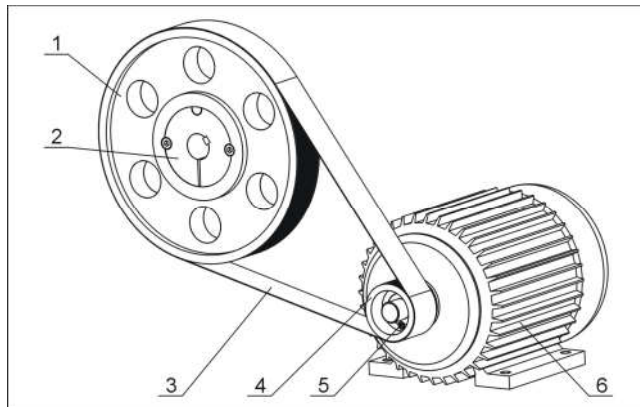


Note: Please refer to material list 8 about the parts code.

8. Paddle Blade Rest Parts List

No.	Name	Quantity
1	Inner hexagonal countersunk bolt M8×12	6
2	Material fender	2
3	Rotating blade	3
4	Inner hexagon cylindrical screw M10×35	12-18
5	Main shaft	1
6	Blade pressing plate	3

9. Transmission Parts

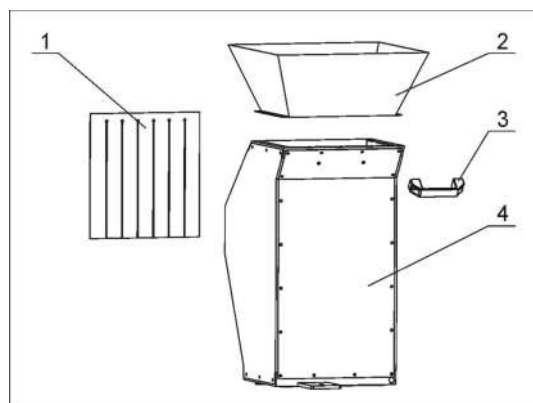


Note: Please refer to material list 10 about the parts code.

10. Transmission Parts Parts List

No.	Name	Quantity
1	Big belt pulley	1
2	Taper sleeve	1
3	V belt 20 PJ 53" (SG-20N)	1
	V belt 20 PJ 50" (SG-16N)	1
4	Motor belt pulley	1
5	Taper sleeve	1
6	Motor	1

11. Feed Port, Feed Box and Material Check Plate

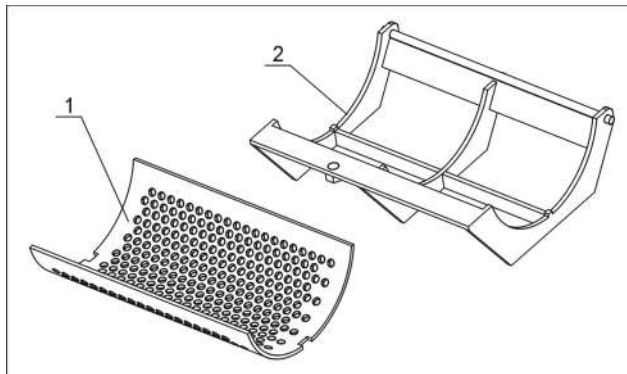


Note: Please refer to material list 12 about the parts code.

12. Feed Port, Feed Box and Material Check Plate Parts List

No.	Name	Quantity
1	Material fender	1
2	Feed opening	1
3	Handle	1
4	Feed box	1

13. Screen and Screen Frame

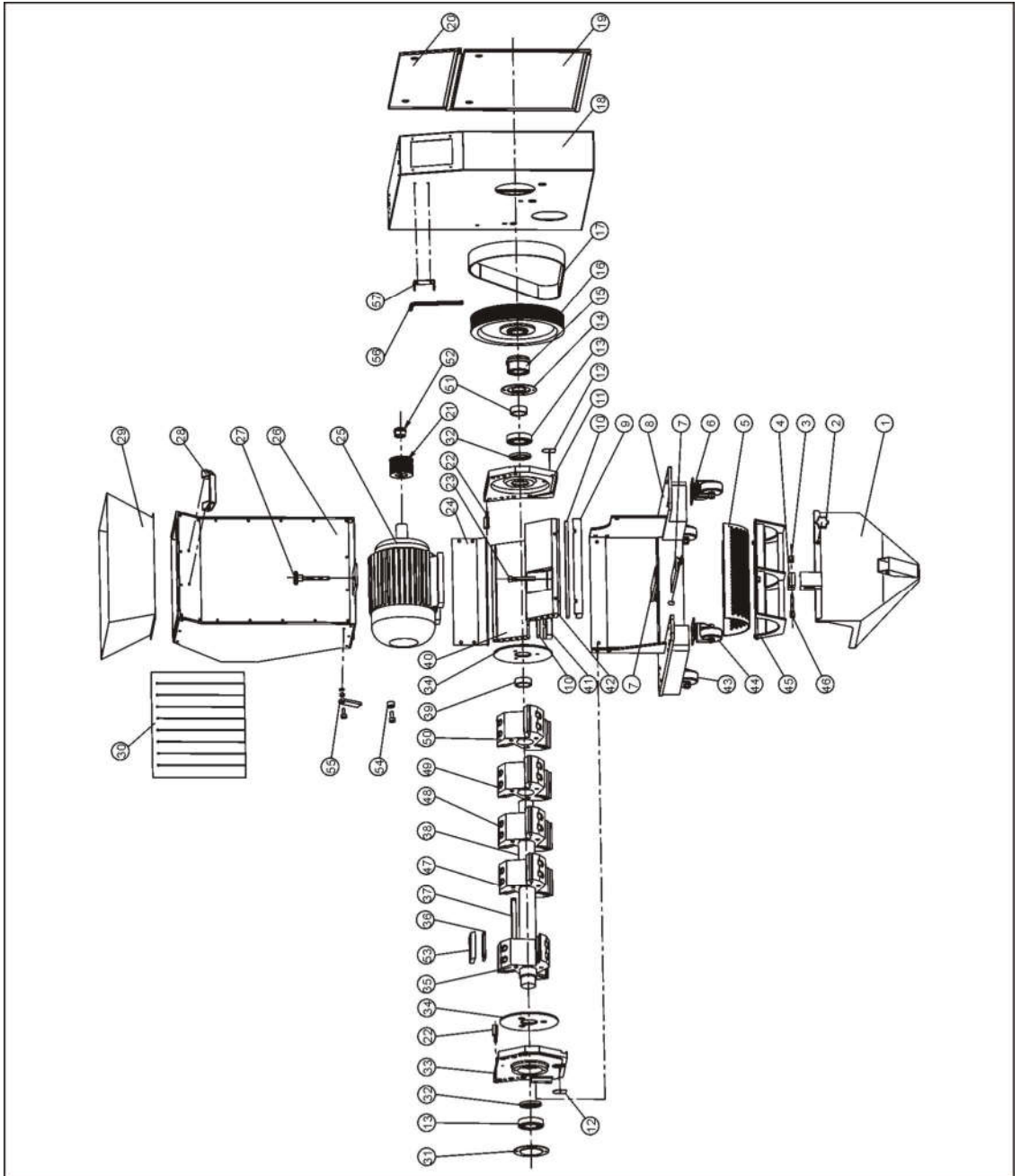


Note: Please refer to material list 14 about the parts code.

14. Screen and Screen Frame Parts List

No.	Name	Quantity
1	Screen	1
2	Screen bracket	1

1. Assembly Drawing (SG-1635N(H))



Note: Please refer to material list 2 about the parts code.

2. Parts List(SG-1635N(H))

SG-1635N					
No.	Name	Part No.	No.	Name	Part No.
1	Storage box	-	27	Star assembly of feeding box	BH10204202010
2	Knob	YR40083500000	28	Handle*	BW20012000140
3	Safety switch knob	BH10024200010	29	Feeding mouth	-
4	Safety switch installation board	BH10204202310	30	Material fender	-
5	Screen (Φ4)**	BL50163521620	31	Left bearing cover plate	-
	Screen (Φ5)**	BL50162050020	32	Oil seal	YR80554200000
	Screen (Φ6)**	BL50163521720	33	Left bearing plate	BW30162804120
	Screen (Φ8)**	BL50163521820	34	Material fender (65Mn)	YW45162850000
	Screen (Φ10)**	BL50163521920	35	Blade rest (1)	BW30162811610
	Screen (Φ12)**	BL50163521020	36	Rotating balde**	YW42162840000
6	Castor	YW03000300000	37	Flat key 10X337	BH10163510010
7	Motor adjusting plate	-	38	Shaft	BH55163500010
8	Base	-	39	Sleeve	BH10161500010
9	Front pressure block	BH10163504010	40	Back block	BH10163560010
10	Sustain brace**	YW41163520000	41	Pressure block of back block	BH10163550010
11	Right end plate	BH10161600010	42	Front block	BW30163504020
12	Bearing cover	-	43	Fixed castor 3"	YW03000300300
13	Bearing 6207DD*	YW11620700000	44	Movable castor 3"	YW03000300200
14	Right bearing cover plate	-	45	Screen rest	-
15	Taper sleeve 3020-35	BW30001605320	46	Safety switch installation shaft	BH10204300010
16	Large belt wheel	BW30001605120	47	Blade rest 1	BW30001612910
17	Poly V-belt 20PJ50 *	YW30205000000	48	Blade rest 2	BW30001613010
18	Outer shell	-	49	Blade rest 3	BW30001613110
19	Outer cover board of shell	-	50	Blade rest (2)	BW30163511810
20	Upper cover board of shell	-	51	Sleeve 1	BH10162823010
21	Small belt pulley	BW30001605220	52	Taper sleeve 1210-28	BW30001605420
22	Ratating shaft	BH10204100010	53	Press block for rotating blade	BH11162700010
23	Hex socket screw M12x80	YW61128000000	54	Limit stop sleeve	BH10162804110
24	Check plate for storage box	-	55	Limit stop	-
25	Motor (2.2kW)	YM10692900000	56	Hex key M10	JT10010000100
26	Feeding box	-	57	Hex key fixing board	-
SG-1635NH					
No.	Name	Part No.	No.	Name	Part No.
1	Storage box	-	27	Star assembly of feeding box	BH10204202010
2	Knob	YR40083500000	28	Handle*	BW20012000140
3	Safety switch knob	BH10024200010	29	Feeding mouth	-
4	Safety switch installation board	BH10204202310	30	Material fender	-
5	Screen (Φ4)**	BL50163521620	31	Left bearing cover plate	-
	Screen (Φ5)**	BL50162050020	32	Oil seal	YR80554200000
	Screen (Φ6)**	BL50163521720	33	Left bearing plate	BW30162804120
	Screen (Φ8)**	BL50163521820	34	Material fender (65Mn)	YW45162850000
	Screen (Φ10)**	BL50163521920	35	Blade rest (1)	BW30162811610
	Screen (Φ12)**	BL50163521020	36	Rotating balde**	YW42162840000
6	Castor	YW03000300000	37	Flat key 10X337	BH10163510010

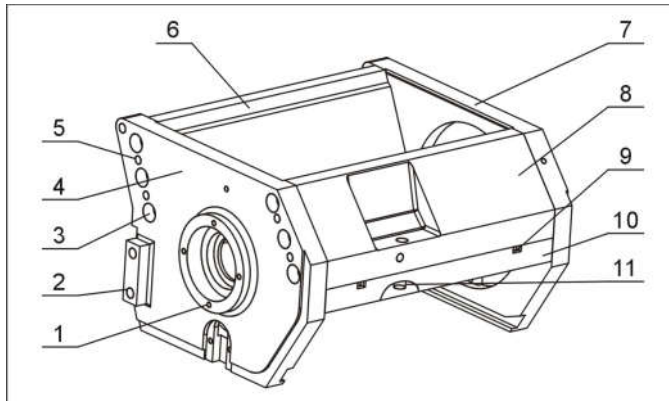
7	Motor adjusting plate	-	38	Shaft	BH55163500010
8	Base	-	39	Sleeve	BH10161500010
9	Front pressure block	BH10163504010	40	Back block	BH10163560010
10	Sustain brace**	YW41163520000	41	Pressure block of back block	BH10163550010
11	Right end plate	BH10161600010	42	Front block	BW30163504020
12	Bearing cover	-	43	Fixed castor 3"	YW03000300300
13	Bearing 6207DD*	YW11620700000	44	Movable castor 3"	YW03000300200
14	Right bearing cover plate	-	45	Screen rest	-
15	Taper sleeve 3020-35	BW30001605320	46	Safety switch installation shaft	BH10204300010
16	Large belt wheel	BW30001605120	47	Blade rest 1	BW30001612910
17	Poly V-belt 20PJ50 *	YW30205000000	48	Blade rest 2	BW30001613010
18	Outer shell	-	49	Blade rest 3	BW30001613110
19	Outer cover board of shell	-	50	Blade rest (2)	BW30163511810
20	Upper cover board of shell	-	51	Sleeve 1	BH10162823010
21	Small belt pulley	BW30002005220	52	Taper sleeve 1610-38	BW30002005420
22	Rotating shaft	BH10204100010	53	Press block for rotating blade	BH11162700010
23	Hex socket screw M12x80	YW61128000000	54	Limit stop sleeve	BH10162804110
24	Check plate for storage box	-	55	Limit stop	-
25	Motor (3.0kW)	YM10361900000	56	Hex key M10	JT10010000100
26	Feeding box	-	57	Hex key fixing board	-

* means possible broken parts.

** means easy broken part. and spare backup is suggested.

Please confirm the version of manual before placing the purchase order to guarantee that the item number of the spare part is in accordance with the real object.

3. Cutting Chamber

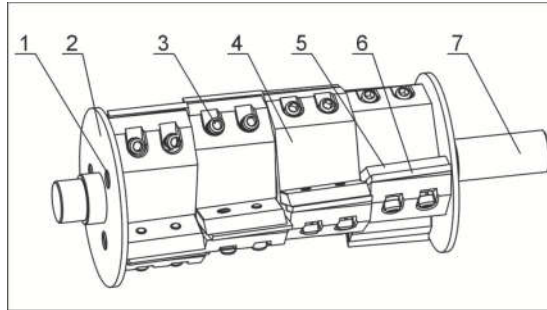


Note: Please refer to material list 4 about the parts code.

4. Cutting Chamber Parts List

No.	Name	Quantity
1	Cross socket head cap screw M5×10	12
2	Inner hexagonal column bolt M10×20	5
3	Inner hexagonal column bolt M10×35	12
4	Left bearing holder	1
5	Flexible column pin 8×35	8
6	Back block	1
7	Right bearing holder	1
8	Front block	1
9	Inner hexagonal set screw M5×16 (SG-20N)	4
	Inner hexagonal set screw M4×16 (SG-16N)	4
10	Pressure block of front block	1
11	Inner hexagonal column bolt M10×25 (SG-20N)	6-8
	Inner hexagonal column bolt M8×25 (SG-16N)	6-8

5. Staggered Blade Rest

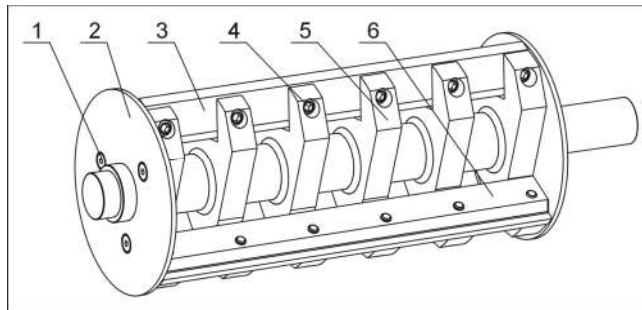


Note: Please refer to material list 6 about the parts code.

6. Staggered Blade Rest Parts List

No.	Name	Quantity
1	Inner hexagonal countersunk bolt M8×12	6
2	Material fender	2
3	Inner hexagon cylindrical screw M8×30	18-24-30
4	Blade rest	3-4-5
5	Blade fastener	9-12-15
6	Rrotating blade	9-12-15
7	Main shaft	1

7. Paddle Blade Rest

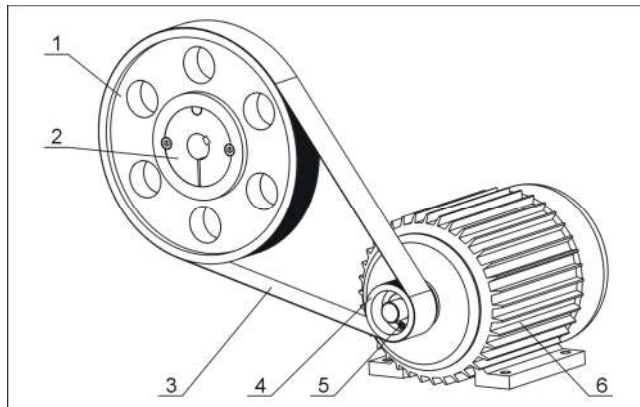


Note: Please refer to material list 8 about the parts code.

8. Paddle Blade Rest Parts List

No.	Name	Quantity
1	Inner hexagonal countersunk bolt M8×12	6
2	Material fender	2
3	Rotating blade	3
4	Inner hexagon cylindrical screw M10×35	12-18
5	Main shaft	1
6	Blade pressing plate	3

9. Transmission Parts

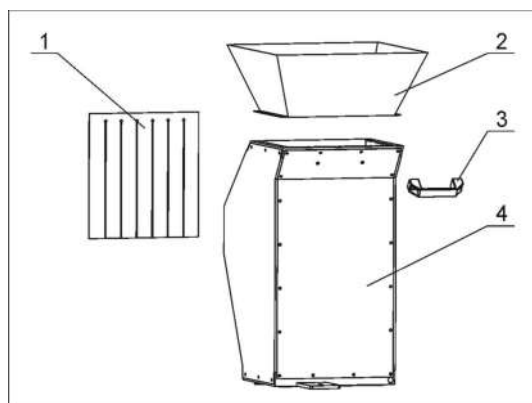


Note: Please refer to material list 10 about the parts code.

10. Transmission Parts Parts List

No.	Name	Quantity
1	Big belt pulley	1
2	Taper sleeve	1
3	V belt 20 PJ 53" (SG-20N)	1
	V belt 20 PJ 50" (SG-16N)	1
4	Motor belt pulley	1
5	Taper sleeve	1
6	Motor	1

11. Feed Port, Feed Box and Material Check Plate

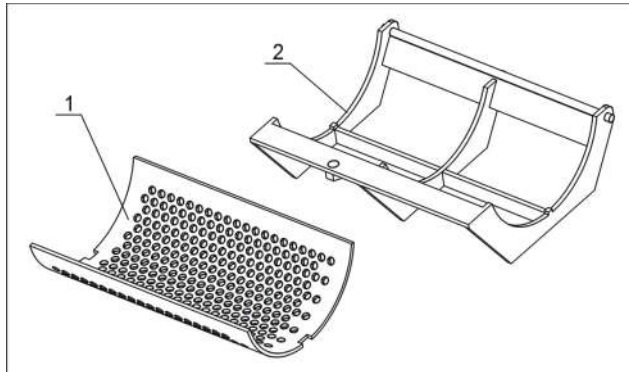


Note: Please refer to material list 12 about the parts code.

12. Feed Port, Feed Box and Material Check Plate Parts List

No.	Name	Quantity
1	Material fender	1
2	Feed opening	1
3	Handle	1
4	Feed box	1

13. Screen and Screen Frame

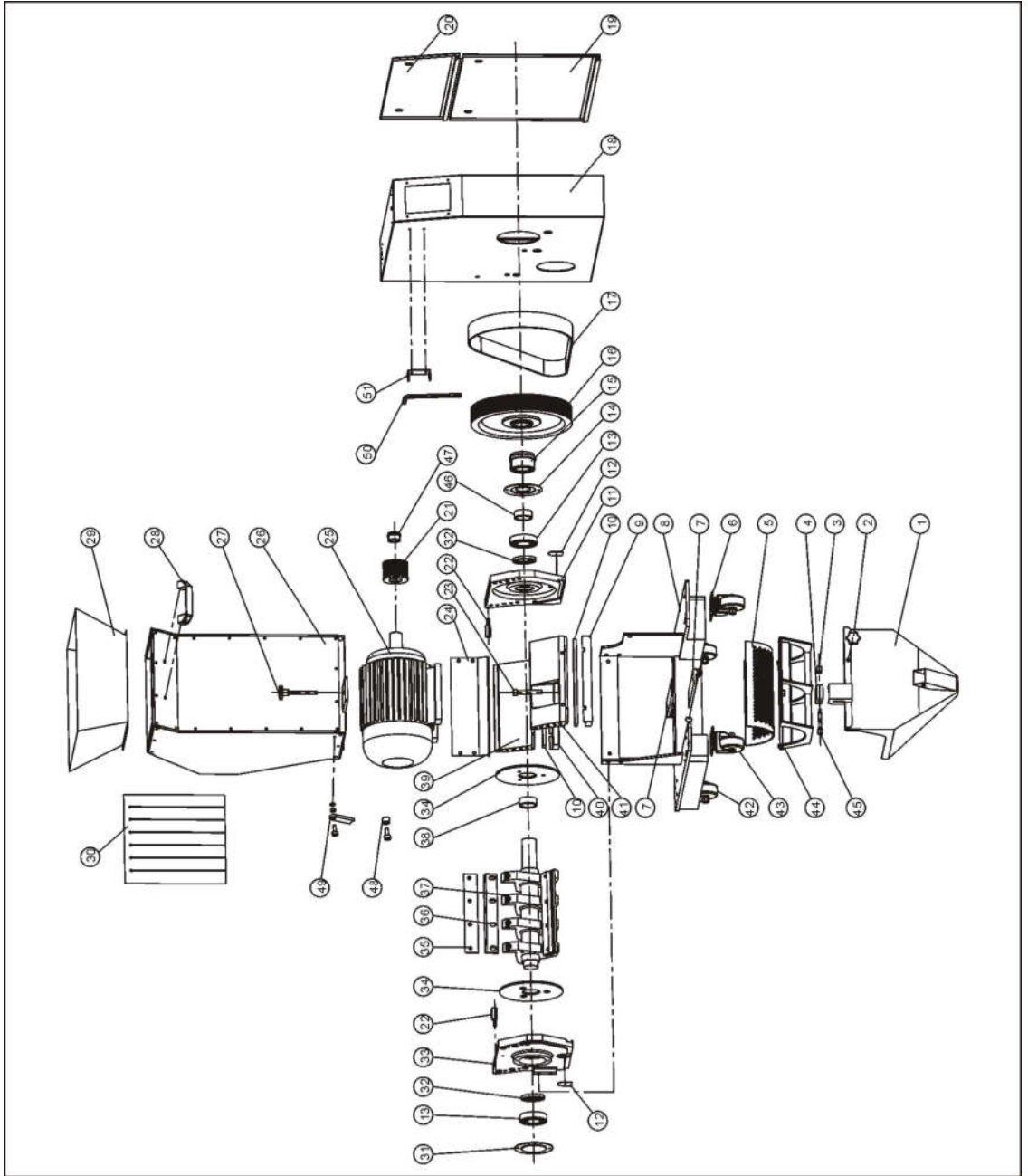


Note: Please refer to material list 14 about the parts code.

14. Screen and Screen Frame Parts List

No.	Name	Quantity
1	Screen	1
2	Screen bracket	1

1. Assembly Drawing (SG-2028N(H))



Note: Please refer to material list 2 about the parts code.

2. Parts List (SG-2028N(H))

SG-2028N					
No.	Name	Part No.	No.	Name	Part No.
1	Material collection case	-	24	Check plate for storage box	-
2	Handle	YR40083500000	25	Motor (2.2kW)	YM10692900000
3	Safety switch handle	BH10024200010	26	Feeding box	-
4	Safety switch installation board	BH10204202310	27	Star assembly of feeding box	BH10204202010
5	Screen (Φ4)**	BL50202810620	28	Handle *	BW20012000140
	Screen (Φ5)**	BL50202810720	29	Feeding mouth	-
	Screen (Φ6)**	BL55202850020	30	Material fender	-
	Screen (Φ7)**	BL50202810820	31	Cover board of left bearing plate	-
	Screen (Φ8)**	BL50202810920	32	Oil seal	YR80557200000
	Screen (Φ10)**	BL50202811020	33	Left bearing plate	BW30204204120
	Screen (Φ12)**	BL50202811120	34	Material fender (65Mn)	BH11020020010
6	Castor with brake 3"	YW03000300000	35	Pressure block of balde	BH11202850010
7	Adjusting board for motor	-	36	Rotating blade**	YW43202800000
8	Motor base	-	37	Blade rest	BH11002028010
9	Pressure block of front block	BW30202813510	38	Sleeve	BH10204500010
10	Fixed balde**	YW41202800600	39	Pressure block	BW30202813610
11	Right bearing holder	BH10204600010	40	Pressure block of back block	BW30202813710
12	Cover board	-	41	Front block	BW30202813410
13	Bearing 6209DD*	YW11620900000	42	Fixed castor 3"	YW03000300300
14	Right bearing cover plate	-	43	Movable castor 3"	YW03000300200
15	Taper sleeve 3020-45	BW30002005520	44	Screen rest	-
16	Large belt wheel	BW30001605120	45	Safety switch installation shaft	BH10204300010
17	Poly V-belt 20PJ53 *	YR00532000000	46	Sleeve 1	BH10204203010
18	Out housing	-	47	Taper sleeve 1610-28	BW30002005320
19	Lower cover board of shell	-	48	Limit stop sleeve	BH10162804110
20	Upper cpver board of shell	-	49	Limit stop	-
21	Small belt pulley	BW30002005220	50	Hex key M10	JT10010000100
22	Rotating shaft	BH10204100010	51	Hex key fixing board	-
23	Hex socket screw M12x80	YW61128000000			
SG-2028NH					
No.	Name	Part No.	No.	Name	Part No.
1	Material collection case	-	24	Check plate for storage box	-
2	Handle	YR40083500000	25	Motor (3.0kW)	YM10361900000
3	Safety switch handle	BH10024200010	26	Feeding box	-
4	Safety switch installation board	BH10204202310	27	Star assembly of feeding box	BH10204202010
5	Screen (Φ4)**	BL50202810620	28	Handle *	BW20012000140
	Screen (Φ5)**	BL50202810720	29	Feeding mouth	-
	Screen (Φ6)**	BL55202850020	30	Material fender	-
	Screen (Φ7)**	BL50202810820	31	Cover board of left bearing plate	-
	Screen (Φ8)**	BL50202810920	32	Oil seal	YR80557200000
	Screen (Φ10)**	BL50202811020	33	Left bearing plate	BW30204204120
	Screen (Φ12)**	BL50202811120	34	Material fender (65Mn)	BH11020020010
6	Castor with brake 3"	YW03000300000	35	Pressure block of balde	BH11202850010

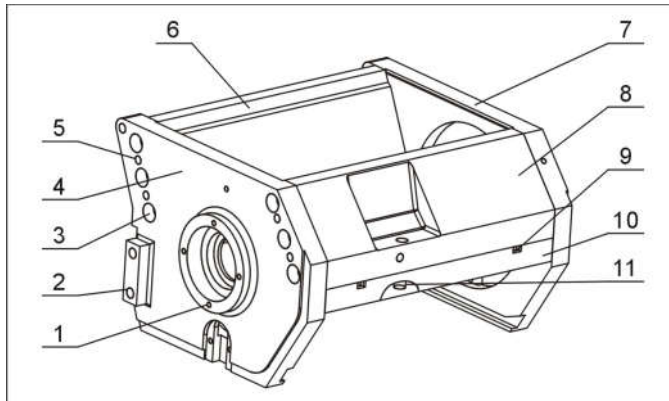
7	Adjusting board for motor	-	36	Rotating blade**	YW43202800000
8	Motor base	-	37	Blade rest	BH11002028010
9	Pressure block of front block	BW30202813510	38	Sleeve	BH10204500010
10	Fixed blade**	YW41202800600	39	Pressure block	BW30202813610
11	Right bearing holder	BH10204600010	40	Pressure block of back block	BW30202813710
12	Cover board	-	41	Front block	BW30202813410
13	Bearing 6209DD*	YW11620900000	42	Fixed castor 3"	YW03000300300
14	Right bearing cover plate	-	43	Movable castor 3"	YW03000300200
15	Taper sleeve 3020-45	BW30002005520	44	Screen rest	-
16	Large belt wheel	BW30001605120	45	Safety switch installation shaft	BH10204300010
17	Poly V-belt 20PJ53 *	YR00532000000	46	Sleeve 1	BH10204203010
18	Out housing	-	47	Taper sleeve 1610-38	BW30002005420
19	Lower cover board of shell	-	48	Limit stop sleeve	BH10162804110
20	Upper cover board of shell	-	49	Limit stop	-
21	Small belt pulley	BW30001605220	50	Hex key M10	JT10010000100
22	Rotating shaft	BH10204100010	51	Hex key fixing board	-
23	Hex socket screw M12x80	YW61128000000			

* means possible broken parts.

** means easy broken part. and spare backup is suggested.

Please confirm the version of manual before placing the purchase order to guarantee that the item number of the spare part is in accordance with the real object.

3. Cutting Chamber

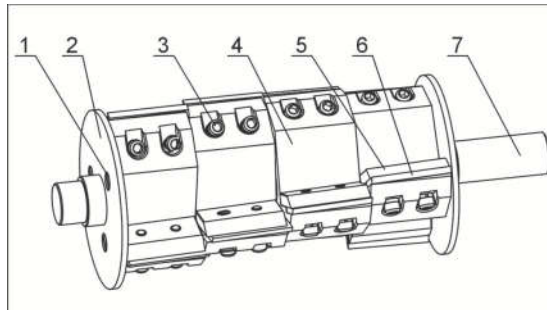


Note: Please refer to material list 4 about the parts code.

4. Cutting Chamber Parts List

No.	Name	Quantity
1	Cross socket head cap screw M5×10	12
2	Inner hexagonal column bolt M10×20	5
3	Inner hexagonal column bolt M10×35	12
4	Left bearing holder	1
5	Flexible column pin 8×35	8
6	Back block	1
7	Right bearing holder	1
8	Front block	1
9	Inner hexagonal set screw M5×16 (SG-20N)	4
	Inner hexagonal set screw M4×16 (SG-16N)	4
10	Pressure block of front block	1
11	Inner hexagonal column bolt M10×25 (SG-20N)	6-8
	Inner hexagonal column bolt M8×25 (SG-16N)	6-8

5. Staggered Blade Rest

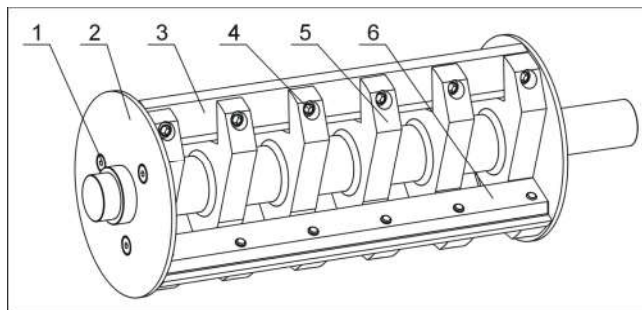


Note: Please refer to material list 6 about the parts code.

6. Staggered Blade Rest Parts List

No.	Name	Quantity
1	Inner hexagonal countersunk bolt M8×12	6
2	Material fender	2
3	Inner hexagon cylindrical screw M8×30	18-24-30
4	Blade rest	3-4-5
5	Blade fastener	9-12-15
6	Rrotating blade	9-12-15
7	Main shaft	1

7. Paddle Blade Rest

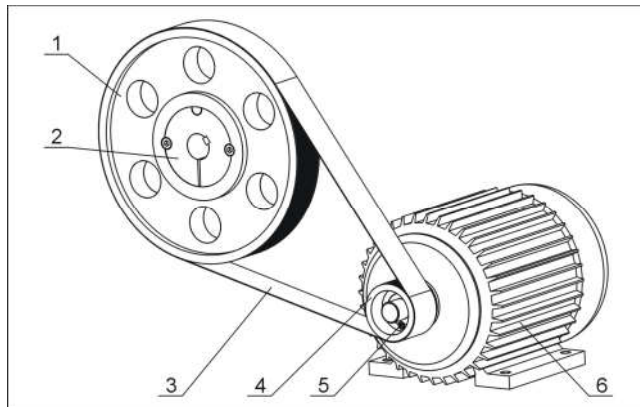


Note: Please refer to material list 8 about the parts code.

8. Paddle Blade Rest Parts List

No.	Name	Quantity
1	Inner hexagonal countersunk bolt M8×12	6
2	Material fender	2
3	Rotating blade	3
4	Inner hexagon cylindrical screw M10×35	12-18
5	Main shaft	1
6	Blade pressing plate	3

9. Transmission Parts

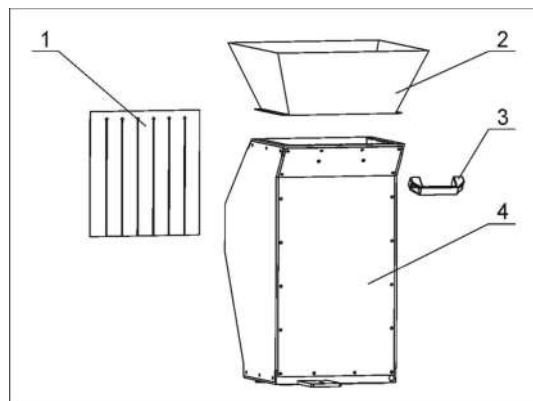


Note: Please refer to material list 10 about the parts code.

10. Transmission Parts Parts List

No.	Name	Quantity
1	Big belt pulley	1
2	Taper sleeve	1
3	V belt 20 PJ 53" (SG-20N)	1
	V belt 20 PJ 50" (SG-16N)	1
4	Motor belt pulley	1
5	Taper sleeve	1
6	Motor	1

11. Feed Port, Feed Box and Material Check Plate

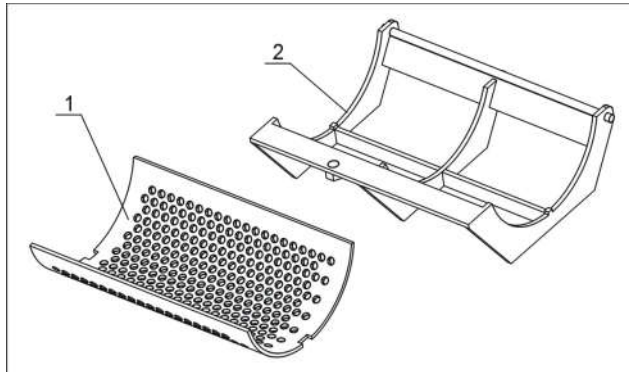


Note: Please refer to material list 12 about the parts code.

12. Feed Port, Feed Box and Material Check Plate Parts List

No.	Name	Quantity
1	Material fender	1
2	Feed opening	1
3	Handle	1
4	Feed box	1

13. Screen and Screen Frame

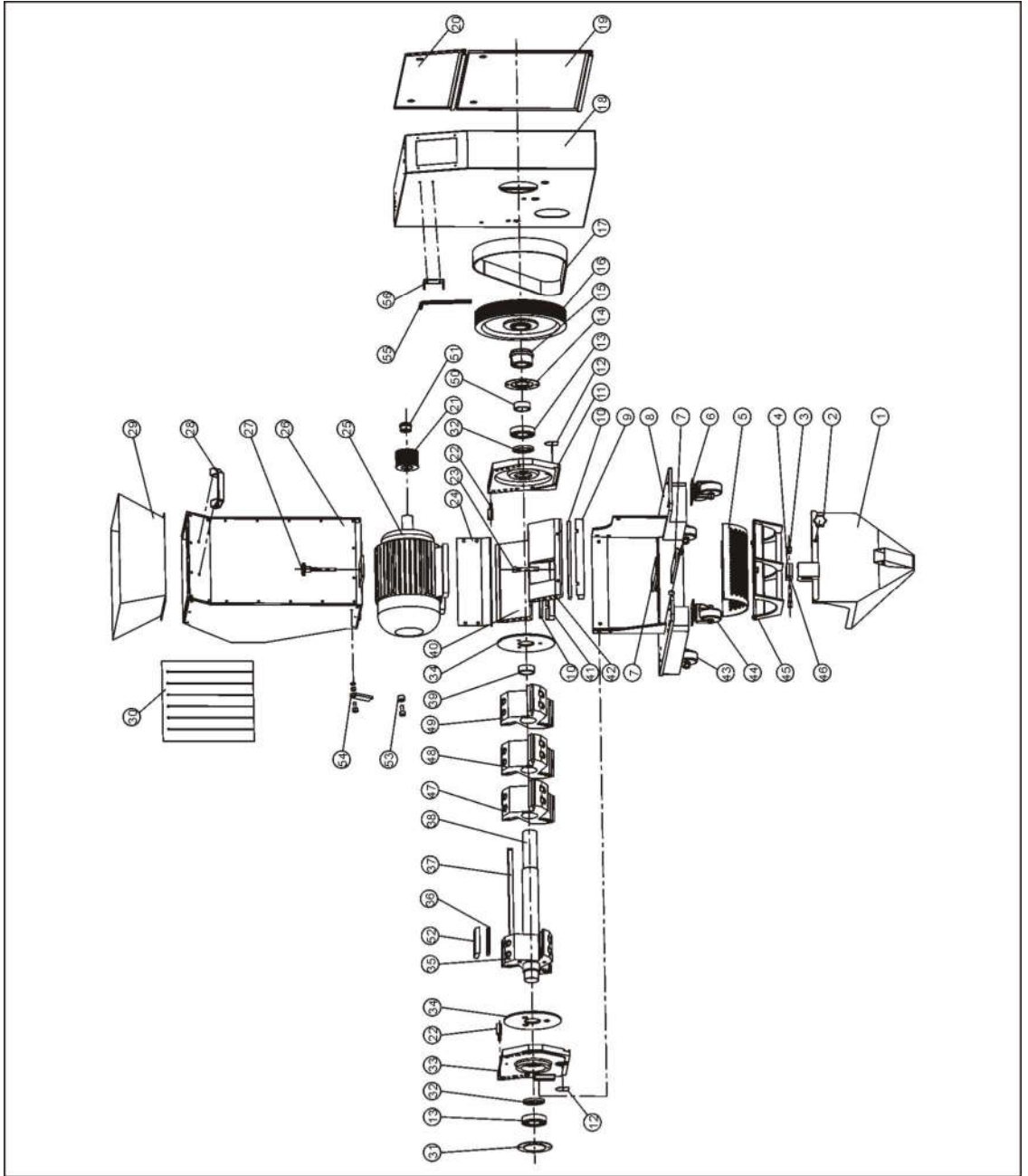


Note: Please refer to material list 14 about the parts code.

14. Screen and Screen Frame Parts List

No.	Name	Quantity
1	Screen	1
2	Screen bracket	1

1. Assembly Drawing (SG-2028NC(H))



Note: Please refer to material list 2 about the parts code.

2. Parts List (SG-2028NC(H))

SG-2028NC					
No.	Name	Part No.	No.	Name	Part No.
1	Material collection case	-	26	Feeding box	-
2	Handle	YR40083500000	27	Star assembly of feeding box	BH10204202010
3	Safety switch handle	BH10024200010	28	Handle *	BW20012000140
4	Safety switch installation board	BH10204202310	29	Feeding mouth	-
5	Screen (Φ4)**	BL50202810620	30	Material fender	-
	Screen (Φ5)**	BL50202810720	31	Cover board of left bearing plate	-
	Screen (Φ6)**	BL55202850020	32	Oil seal	YR80557200000
	Screen (Φ7)**	BL50202810820	33	Left bearing plate	BW30204204120
	Screen (Φ8)**	BL50202810920	34	Material fender (65Mn)	BH11020020010
	Screen (Φ10)**	BL50202811020	35	Blade rest 1	BW30002012910
	Screen (Φ12)**	BL50202811120	36	Rotating blade**	BW41200100010
6	Castor with brake 3"	YW03000300000	37	Flat key 14X267	BH11202800310
7	Adjusting board for motor	-	38	Shaft	BH11202810010
8	Motor base	-	39	Sleeve	BH10204500010
9	Pressure block of front block	BW30202813510	40	Pressure block	BW30202813610
10	Fixed balde**	YW41202801600	41	Pressure block of back block	BW30202813710
11	Right bearing holder	BH10204600010	42	Front block	BW30202813410
12	Cover board	-	43	Fixed castor 3"	BW30202813610
13	Bearing 6209DD*	YW11620900000	44	Movable castor 3"	BW30202813710
14	Right bearing cover plate	-	45	Screen rest	BW30202813410
15	Taper sleeve 3020-45	BW30002005520	46	Safety switch installation shaft	BW30202813610
16	Large belt wheel	BW30001605120	47	Blade rest 2	BW30202813710
17	Poly V-belt 20PJ53 *	YR00532000000	48	Blade rest 3	BW30202813410
18	Out housing	-	49	Blade rest 4	BW30202813610
19	Lower cover board of shell	-	50	Sleeve 1	BH10204203010
20	Upper cpver board of shell	-	51	Taper sleeve 1610-28	BW30002005320
21	Small belt pulley	BW30002005220	52	Press block for rotating blade	BH10235200010
22	Rotating shaft	BH10204100010	53	Limit stop sleeve	BH10162804110
23	Hex socket screw M12x80	YW61128000000	54	Limit stop	-
24	Check plate for storage box	-	55	Hex key M10	JT10010000100
25	Motor (2.2kW)	YM10692900000	56	Hex key fixing board	-
SG-2028NCH					
No.	Name	Part No.	No.	Name	Part No.
1	Material collection case	-	26	Feeding box	-
2	Handle	YR40083500000	27	Star assembly of feeding box	BH10204202010
3	Safety switch handle	BH10024200010	28	Handle *	BW20012000140
4	Safety switch installation board	BH10204202310	29	Feeding mouth	-
5	Screen (Φ4)**	BL50202810620	30	Material fender	-
	Screen (Φ5)**	BL50202810720	31	Cover board of left bearing plate	-
	Screen (Φ6)**	BL55202850020	32	Oil seal	YR80557200000
	Screen (Φ7)**	BL50202810820	33	Left bearing plate	BW30204204120
	Screen (Φ8)**	BL50202810920	34	Material fender (65Mn)	BH11020020010
	Screen (Φ10)**	BL50202811020	35	Blade rest 1	BW30002012910
	Screen (Φ12)**	BL50202811120	36	Rotating blade**	BW41200100010
6	Castor with brake 3"	YW03000300000	37	Flat key 14X267	BH11202800310

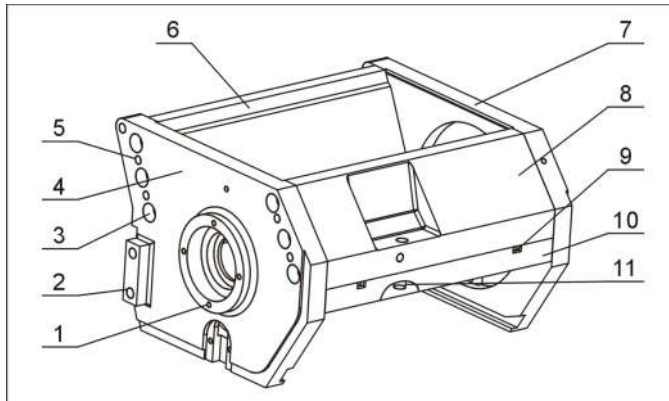
7	Adjusting board for motor	-	38	Shaft	BH11202810010
8	Motor base	-	39	Sleeve	BH10204500010
9	Pressure block of front block	BW30202813510	40	Pressure block	BW30202813610
10	Fixed blade**	YW41202801600	41	Pressure block of back block	BW30202813710
11	Right bearing holder	BH10204600010	42	Front block	BW30202813410
12	Cover board	-	43	Fixed castor 3"	YW03000300300
13	Bearing 6209DD*	YW11620900000	44	Movable castor 3"	YW03000300200
14	Right bearing cover plate	-	45	Screen rest	-
15	Taper sleeve 3020-45	BW30002005520	46	Safety switch installation shaft	BH10204300010
16	Large belt wheel	BW30001605120	47	Blade rest 2	BW30002013010
17	Poly V-belt 20PJ53 *	YR00532000000	48	Blade rest 3	BW30002013110
18	Out housing	-	49	Blade rest 4	BW30202813210
19	Lower cover board of shell	-	50	Sleeve 1	BH10204203010
20	Upper cover board of shell	-	51	Taper sleeve 1610-38	BW30002005420
21	Small belt pulley	BW30002005220	52	Press block for rotating blade	BH10235200010
22	Rotating shaft	BH10204100010	53	Limit stop sleeve	BH10162804110
23	Hex socket screw M12x80	YW61128000000	54	Limit stop	-
24	Check plate for storage box	-	55	Hex key M10	JT10010000100
25	Motor (3.0kW)	YM10361900000	56	Hex key fixing board	-

* means possible broken parts.

** means easy broken part. and spare backup is suggested.

Please confirm the version of manual before placing the purchase order to guarantee that the item number of the spare part is in accordance with the real object.

3. Cutting Chamber

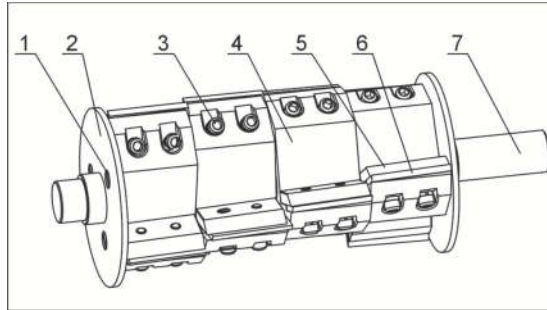


Note: Please refer to material list 4 about the parts code.

4. Cutting Chamber Parts List

No.	Name	Quantity
1	Cross socket head cap screw M5×10	12
2	Inner hexagonal column bolt M10×20	5
3	Inner hexagonal column bolt M10×35	12
4	Left bearing holder	1
5	Flexible column pin 8×35	8
6	Back block	1
7	Right bearing holder	1
8	Front block	1
9	Inner hexagonal set screw M5×16 (SG-20N)	4
	Inner hexagonal set screw M4×16 (SG-16N)	4
10	Pressure block of front block	1
11	Inner hexagonal column bolt M10×25 (SG-20N)	6-8
	Inner hexagonal column bolt M8×25 (SG-16N)	6-8

5. Staggered Blade Rest

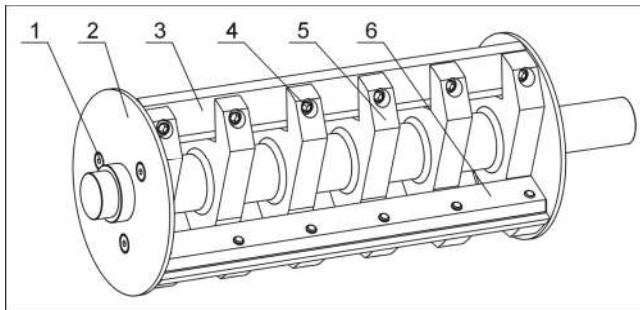


Note: Please refer to material list 6 about the parts code.

6. Staggered Blade Rest Parts List

No.	Name	Quantity
1	Inner hexagonal countersunk bolt M8×12	6
2	Material fender	2
3	Inner hexagon cylindrical screw M8×30	18-24-30
4	Blade rest	3-4-5
5	Blade fastener	9-12-15
6	Rrotating blade	9-12-15
7	Main shaft	1

7. Paddle Blade Rest

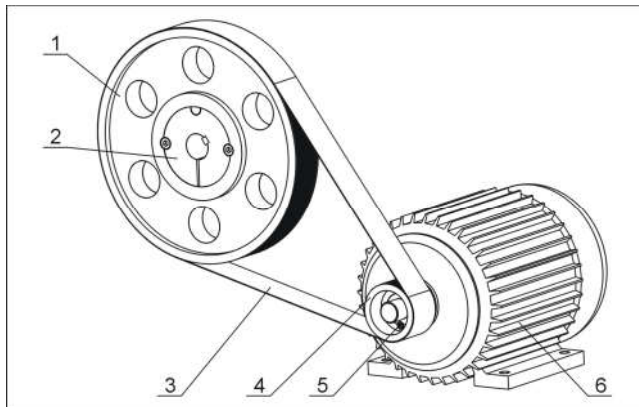


Note: Please refer to material list 8 about the parts code.

8. Paddle Blade Rest Parts List

No.	Name	Quantity
1	Inner hexagonal countersunk bolt M8×12	6
2	Material fender	2
3	Rotating blade	3
4	Inner hexagon cylindrical screw M10×35	12-18
5	Main shaft	1
6	Blade pressing plate	3

9. Transmission Parts

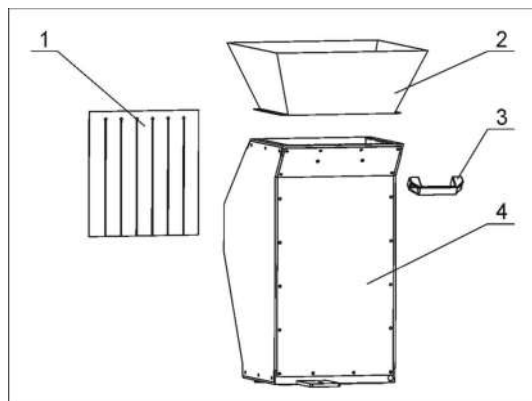


Note: Please refer to material list 10 about the parts code.

10. Transmission Parts Parts List

No.	Name	Quantity
1	Big belt pulley	1
2	Taper sleeve	1
3	V belt 20 PJ 53" (SG-20N)	1
	V belt 20 PJ 50" (SG-16N)	1
4	Motor belt pulley	1
5	Taper sleeve	1
6	Motor	1

11. Feed Port, Feed Box and Material Check Plate

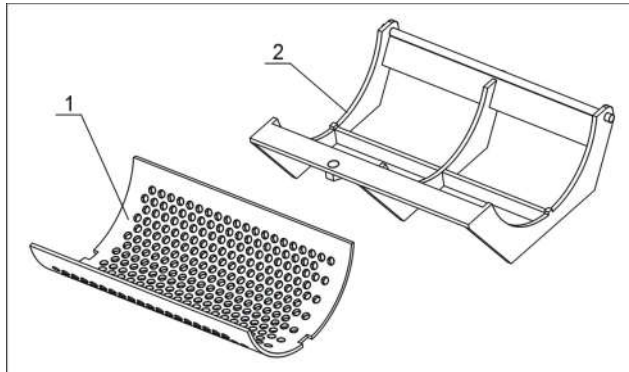


Note: Please refer to material list 12 about the parts code.

12. Feed Port, Feed Box and Material Check Plate Parts List

No.	Name	Quantity
1	Material fender	1
2	Feed opening	1
3	Handle	1
4	Feed box	1

13. Screen and Screen Frame



Note: Please refer to material list 14 about the parts code.

14. Screen and Screen Frame Parts List

No.	Name	Quantity
1	Screen	1
2	Screen bracket	1

1. Assembly Drawing (SG-2042N(H))

2. Parts List (SG-2042N(H))

SG-2042N					
No.	Name	Part No.	No.	Name	Part No.
1	Material collection case	-	24	Check plate for storage box	-
2	Handle	YR40083500000	25	Motor (3.0kW)	YM10361900000
3	Safety switch handle	BH10024200010	26	Feeding box	-
4	Safety switch installation board	BH10204202310	27	Star assembly of feeding box	BH10204202010
5	Screen (Φ4)**	BL50202811620	28	Handle *	BW20012000140
	Screen (Φ5)**	BL50202811720	29	Feeding mouth	-
	Screen (Φ6)**	BL55204260020	30	Material fender	-
	Screen (Φ7)**	BL50202811820	31	Cover board of left bearing plate	-
	Screen (Φ8)**	BL50202811920	32	Oil seal	YR80557200000
	Screen (Φ10)**	BL50202812020	33	Left bearing plate	BW30204204120
	Screen (Φ12)**	BL50202812120	34	Material fender (65Mn)	BH11020020010
6	Castor with brake 3"	YW03000300000	35	Pressure block of balde	BH11204250010
7	Adjusting board for motor	-	36	Rotating blade**	YW43204200000
8	Motor base	-	37	Blade rest	BH11204260010
9	Pressure block of front block	BW30204213510	38	Sleeve	BH10204500010
10	Fixed balde**	YW41204200600	39	Pressure block	BW30204213610
11	Right bearing holder	BH10204600010	40	Pressure block of back block	BW30204213710
12	Cover board	-	41	Front block	BW30204213410
13	Bearing 6209DD*	YW11620900000	42	Fixed castor 3"	YW03000300300
14	Right bearing cover plate	-	43	Movable castor 3"	YW03000300200
15	Taper sleeve 3020-45	BW30002005520	44	Screen rest	-
16	Large belt wheel	BW30001605120	45	Safety switch installation shaft	BH10204300010
17	Poly V-belt 20PJ53 *	YW30253300000	46	Sleeve 1	BH10204203010
18	Out housing	-	47	Taper sleeve 1610-38	BW30002005420
19	Lower cover board of shell	-	48	Limit stop sleeve	BH10162804110
20	Upper cpver board of shell	-	49	Limit stop	-
21	Small belt pulley	BW30002005220	50	Hex key M10	JT10010000100
22	Rotating shaft	BH10204100010	51	Hex key fixing board	-
23	Hex socket screw M12x80	YW61128000000			
SG-2042NH					
No.	Name	Part No.	No.	Name	Part No.
1	Material collection case	-	24	Check plate for storage box	-
2	Handle	YR40083500000	25	Motor (4.0kW)	YM10113300000
3	Safety switch handle	BH10024200010	26	Feeding box	-
4	Safety switch installation board	BH10204202310	27	Star assembly of feeding box	BH10204202010
5	Screen (Φ4)**	BL50202811620	28	Handle *	BW20012000140
	Screen (Φ5)**	BL50202811720	29	Feeding mouth	-
	Screen (Φ6)**	BL55204260020	30	Material fender	-
	Screen (Φ7)**	BL50202811820	31	Cover board of left bearing plate	-
	Screen (Φ8)**	BL50202811920	32	Oil seal	YR80557200000
	Screen (Φ10)**	BL50202812020	33	Left bearing plate	BW30204204120
	Screen (Φ12)**	BL50202812120	34	Material fender (65Mn)	BH11020020010

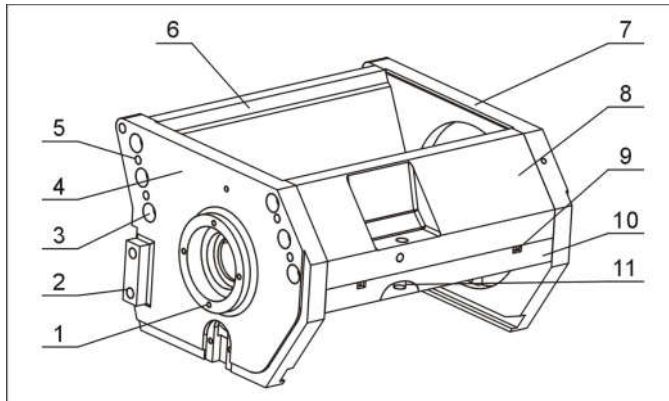
6	Castor with brake 3"	YW03000300000	35	Pressure block of balde	BH11204250010
7	Adjusting board for motor	-	36	Rotating blade**	YW43204200000
8	Motor base	-	37	Blade rest	BH11204260010
9	Pressure block of front block	BW30204213510	38	Sleeve	BH10204500010
10	Fixed balde**	YW41204200600	39	Pressure block	BW30204213610
11	Right bearing holder	BH10204600010	40	Pressure block of back block	BW30204213710
12	Cover board	-	41	Front block	BW30204213410
13	Bearing 6209DD*	YW11620900000	42	Fixed castor 3"	YW03000300300
14	Right bearing cover plate	-	43	Movable castor 3"	YW03000300200
15	Taper sleeve 3020-45	BW30002005520	44	Screen rest	-
16	Large belt wheel	BW30001605120	45	Safety switch installation shaft	BH10204300010
17	Poly V-belt 20PJ53 *	YW30253300000	46	Sleeve 1	BH10204203010
18	Out housing	-	47	Taper sleeve 1610-38	BW30002005420
19	Lower cover board of shell	-	48	Limit stop sleeve	BH10162804110
20	Upper cpver board of shell	-	49	Limit stop	-
21	Small belt pulley	BW30002005220	50	Hex key M10	JT10010000100
22	Rotating shaft	BH10204100010	51	Hex key fixing board	-
23	Hex socket screw M12x80	YW61128000000			

* means possible broken parts.

** means easy broken part. and spare backup is suggested.

Please confirm the version of manual before placing the purchase order to guarantee that the item number of the spare part is in accordance with the real object.

3. Cutting Chamber

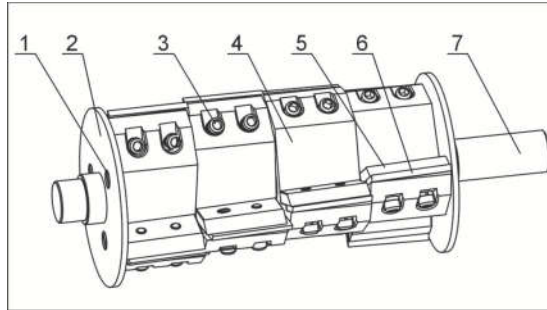


Note: Please refer to material list 4 about the parts code.

4. Cutting Chamber Parts List

No.	Name	Quantity
1	Cross socket head cap screw M5×10	12
2	Inner hexagonal column bolt M10×20	5
3	Inner hexagonal column bolt M10×35	12
4	Left bearing holder	1
5	Flexible column pin 8×35	8
6	Back block	1
7	Right bearing holder	1
8	Front block	1
9	Inner hexagonal set screw M5×16 (SG-20N)	4
	Inner hexagonal set screw M4×16 (SG-16N)	4
10	Pressure block of front block	1
11	Inner hexagonal column bolt M10×25 (SG-20N)	6-8
	Inner hexagonal column bolt M8×25 (SG-16N)	6-8

5. Staggered Blade Rest

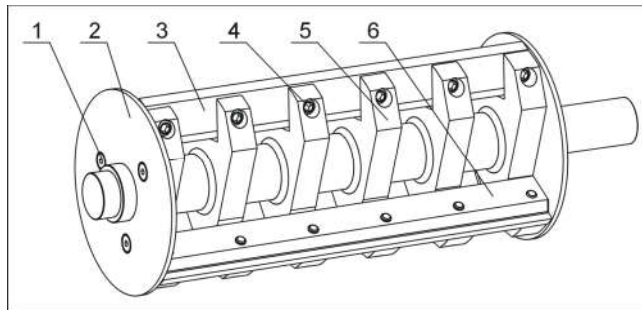


Note: Please refer to material list 6 about the parts code.

6. Staggered Blade Rest Parts List

No.	Name	Quantity
1	Inner hexagonal countersunk bolt M8×12	6
2	Material fender	2
3	Inner hexagon cylindrical screw M8×30	18-24-30
4	Blade rest	3-4-5
5	Blade fastener	9-12-15
6	Rrotating blade	9-12-15
7	Main shaft	1

7. Paddle Blade Rest

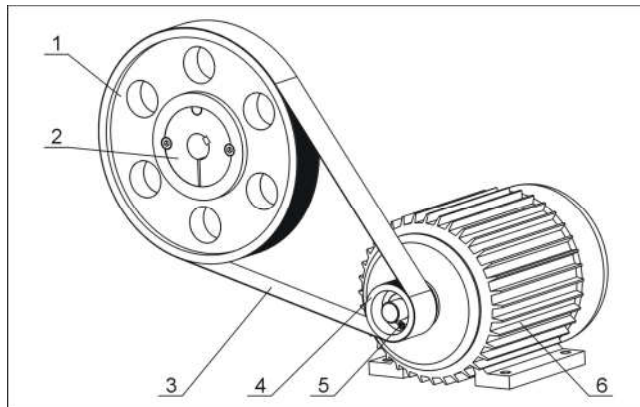


Note: Please refer to material list 8 about the parts code.

8. Paddle Blade Rest Parts List

No.	Name	Quantity
1	Inner hexagonal countersunk bolt M8×12	6
2	Material fender	2
3	Rotating blade	3
4	Inner hexagon cylindrical screw M10×35	12-18
5	Main shaft	1
6	Blade pressing plate	3

9. Transmission Parts

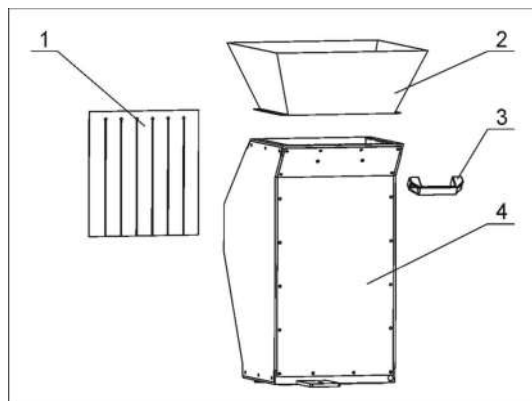


Note: Please refer to material list 10 about the parts code.

10. Transmission Parts Parts List

No.	Name	Quantity
1	Big belt pulley	1
2	Taper sleeve	1
3	V belt 20 PJ 53" (SG-20N)	1
	V belt 20 PJ 50" (SG-16N)	1
4	Motor belt pulley	1
5	Taper sleeve	1
6	Motor	1

11. Feed Port, Feed Box and Material Check Plate

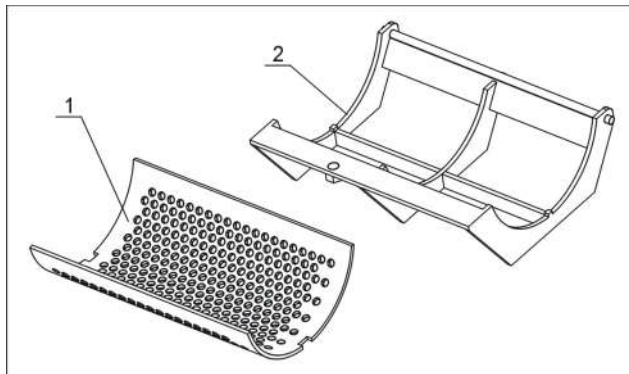


Note: Please refer to material list 12 about the parts code.

12. Feed Port, Feed Box and Material Check Plate Parts List

No.	Name	Quantity
1	Material fender	1
2	Feed opening	1
3	Handle	1
4	Feed box	1

13. Screen and Screen Frame

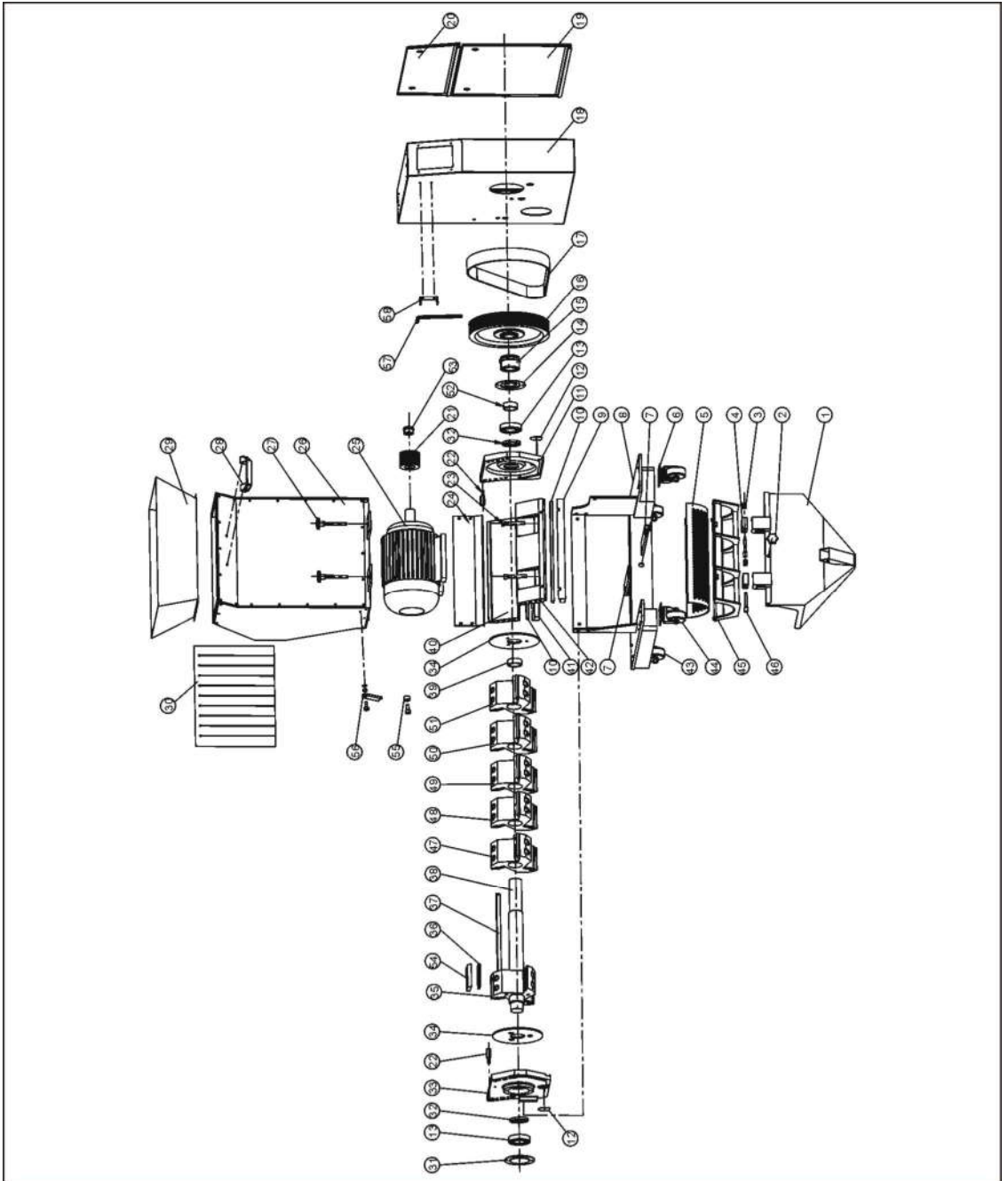


Note: Please refer to material list 14 about the parts code.

14. Screen and Screen Frame Parts List

No.	Name	Quantity
1	Screen	1
2	Screen bracket	1

1. Assembly Drawing (SG-2042NC(H))



Note: Please refer to material list 2 about the parts code.

2. Parts List (SG-2042NC(H))

SG-2042NC					
No.	Name	Part No.	No.	Name	Part No.
1	Material collection case	-	27	Star assembly of feeding box	BH10204202010
2	Handle	YR40083500000	28	Handle *	BW20012000140
3	Safety switch handle	BH10024200010	29	Feeding mouth	-
4	Safety switch installation board	BH10204202310	30	Material fender	-
5	Screen (Φ4)**	BL50202811620	31	Cover board of left bearing plate	-
	Screen (Φ5)**	BL50202811720	32	Oil seal	YR80557200000
	Screen (Φ6)**	BL55204260020	33	Left bearing plate	BW30204204120
	Screen (Φ7)**	BL50202811820	34	Material fender (65Mn)	BH11020020010
	Screen (Φ8)**	BL50202811920	35	Blade rest 1	BW30002012910
	Screen (Φ10)**	BL50202812020	36	Rotating blade**	BW41200100010
	Screen (Φ12)**	BL50202812120	37	Flat key 14X267	BH11204200510
6	Castor with brake 3"	YW03000300000	38	Shaft	BH11204210110
7	Adjusting board for motor	-	39	Sleeve	BH10204500010
8	Motor base	-	40	Pressure block	BW30204213610
9	Pressure block of front block	BW30204213510	41	Pressure block of back block	BW30204213710
10	Fixed balde**	YW41204201700	42	Front block	BW30204213410
11	Right bearing holder	BH10204600010	43	Fixed castor 3"	YW03000300300
12	Cover board	-	44	Movable castor 3"	YW03000300200
13	Bearing 6209DD*	YW11620900000	45	Screen rest	-
14	Right bearing cover plate	-	46	Safety switch installation shaft	BH10204300010
15	Taper sleeve 3020-45	BW30002005520	47	Blade rest 2	BW30002013010
16	Large belt wheel	BW30001605120	48	Blade rest 3	BW30002013110
17	Poly V-belt 20PJ53 *	YW30253300000	49	Blade rest 4	BW30204212910
18	Out housing	-	50	Blade rest 5	BW30204213010
19	Lower cover board of shell	-	51	Blade rest 6	BW30204213110
20	Upper cpver board of shell	-	52	Sleeve 1	BH10204203010
21	Small belt pulley	BW30002005220	53	Taper sleeve 1610-38	BW30002005420
22	Rotating shaft	BH10204100010	54	Press block for rotating blade	BH10235200010
23	Star assembly of screen	YW61128000000	55	Limit stop sleeve	BH10162804110
24	Check plate for storage box	-	56	Limit stop	-
25	Motor (3.0kW)	YM10361900000	57	Hex key M10	JT10010000100
26	Feeding box	-	58	Hex key fixing board	-
SG-2042NCH					
No.	Name	Part No.	No.	Name	Part No.
1	Material collection case	-	27	Star assembly of feeding box	BH10204202010
2	Handle	YR40083500000	28	Handle *	BW20012000140
3	Safety switch handle	BH10024200010	29	Feeding mouth	-

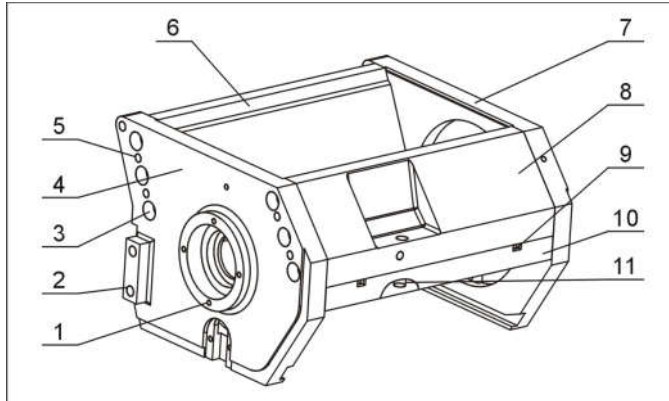
4	Safety switch installation board	BH10204202310	30	Material fender	-
5	Screen (Φ4)**	BL50202811620	31	Cover board of left bearing plate	-
	Screen (Φ5)**	BL50202811720	32	Oil seal	YR80557200000
	Screen (Φ6)**	BL55204260020	33	Left bearing plate	BW30204204120
	Screen (Φ7)**	BL50202811820	34	Material fender (65Mn)	BH11020020010
	Screen (Φ8)**	BL50202811920	35	Blade rest 1	BW30002012910
	Screen (Φ10)**	BL50202812020	36	Rotating blade**	BW41200100010
	Screen (Φ12)**	BL50202812120	37	Flat key 14X267	BH11204200510
6	Castor with brake 3"	YW03000300000	38	Shaft	BH11204210110
7	Adjusting board for motor	-	39	Sleeve	BH10204500010
8	Motor base	-	40	Pressure block	BW30204213610
9	Pressure block of front block	BW30204213510	41	Pressure block of back block	BW30204213710
10	Fixed balde**	YW41204201700	42	Front block	BW30204213410
11	Right bearing holder	BH10204600010	43	Fixed castor 3"	YW03000300300
12	Cover board	-	44	Movable castor 3"	YW03000300200
13	Bearing 6209DD*	YW11620900000	45	Screen rest	-
14	Right bearing cover plate	-	46	Safety switch installation shaft	BH10204300010
15	Taper sleeve 3020-45	BW30002005520	47	Blade rest 2	BW30002013010
16	Large belt wheel	BW30001605120	48	Blade rest 3	BW30002013110
17	Poly V-belt 20PJ53 *	YW30253300000	49	Blade rest 4	BW30204212910
18	Out housing	-	50	Blade rest 5	BW30204213010
19	Lower cover board of shell	-	51	Blade rest 6	BW30204213110
20	Upper cpver board of shell	-	52	Sleeve 1	BH10204203010
21	Small belt pulley	BW30002005220	53	Taper sleeve 1610-38	BW30002005420
22	Rotating shaft	BH10204100010	54	Press block for rotating blade	BH10235200010
23	Star assembly of screen	YW61128000000	55	Limit stop sleeve	BH10162804110
24	Check plate for storage box	-	56	Limit stop	-
25	Motor (4.0kW)	YM10113300000	57	Hex key M10	JT10010000100
26	Feeding box	-	58	Hex key fixing board	-

* means possible broken parts.

** means easy broken part. and spare backup is suggested.

Please confirm the version of manual before placing the purchase order to guarantee that the item number of the spare part is in accordance with the real object.

3. Cutting Chamber

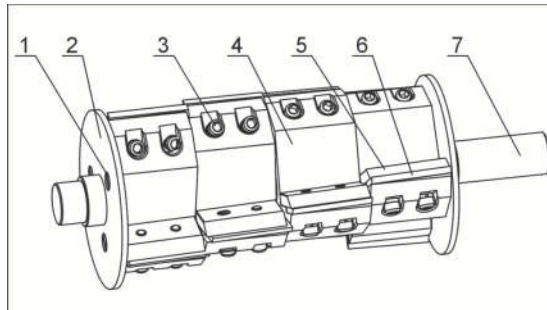


Note: Please refer to material list 4 about the parts code.

4. Cutting Chamber Parts List

No.	Name	Quantity
1	Cross socket head cap screw M5×10	12
2	Inner hexagonal column bolt M10×20	5
3	Inner hexagonal column bolt M10×35	12
4	Left bearing holder	1
5	Flexible column pin 8×35	8
6	Back block	1
7	Right bearing holder	1
8	Front block	1
9	Inner hexagonal set screw M5×16 (SG-20N)	4
	Inner hexagonal set screw M4×16 (SG-16N)	4
10	Pressure block of front block	1
11	Inner hexagonal column bolt M10×25 (SG-20N)	6-8
	Inner hexagonal column bolt M8×25 (SG-16N)	6-8

5. Staggered Blade Rest

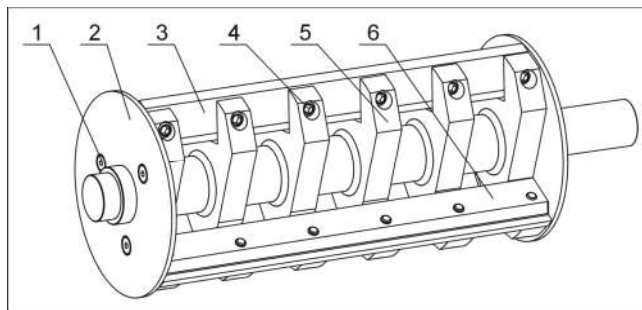


Note: Please refer to material list 6 about the parts code.

6. Staggered Blade Rest Parts List

No.	Name	Quantity
1	Inner hexagonal countersunk bolt M8×12	6
2	Material fender	2
3	Inner hexagon cylindrical screw M8×30	18-24-30
4	Blade rest	3-4-5
5	Blade fastener	9-12-15
6	Rrotating blade	9-12-15
7	Main shaft	1

7. Paddle Blade Rest

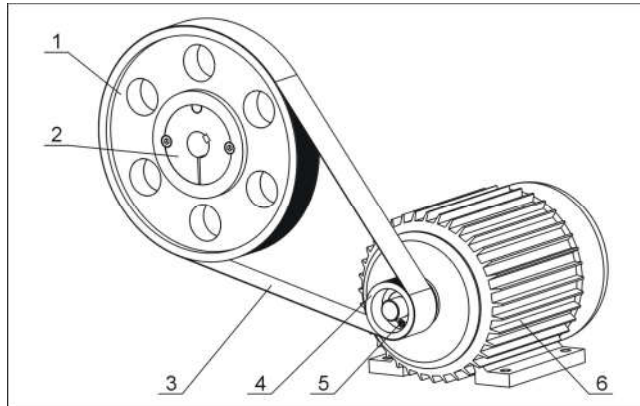


Note: Please refer to material list 8 about the parts code.

8. Paddle Blade Rest Parts List

No.	Name	Quantity
1	Inner hexagonal countersunk bolt M8×12	6
2	Material fender	2
3	Rotating blade	3
4	Inner hexagon cylindrical screw M10×35	12-18
5	Main shaft	1
6	Blade pressing plate	3

9. Transmission Parts

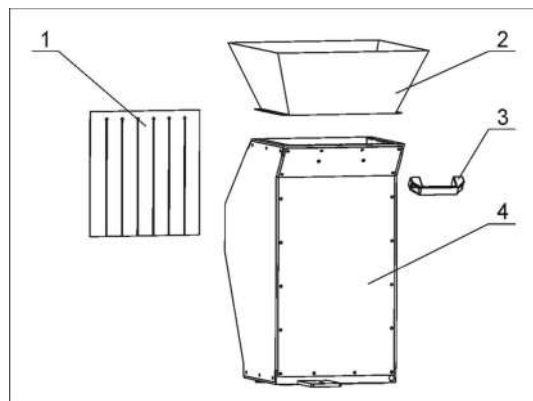


Note: Please refer to material list 10 about the parts code.

10. Transmission Parts Parts List

No.	Name	Quantity
1	Big belt pulley	1
2	Taper sleeve	1
3	V belt 20 PJ 53" (SG-20N)	1
	V belt 20 PJ 50" (SG-16N)	1
4	Motor belt pulley	1
5	Taper sleeve	1
6	Motor	1

11. Feed Port, Feed Box and Material Check Plate

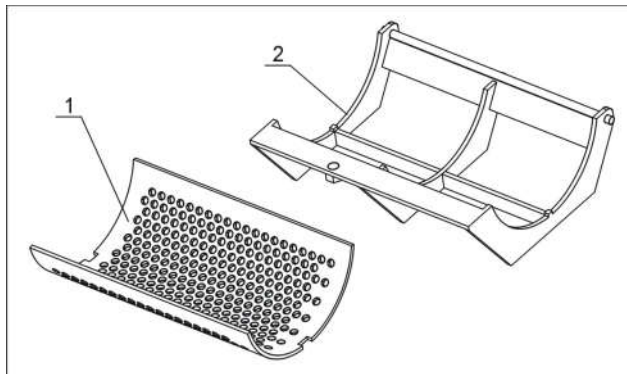


Note: Please refer to material list 12 about the parts code.

12. Feed Port, Feed Box and Material Check Plate Parts List

No.	Name	Quantity
1	Material fender	1
2	Feed opening	1
3	Handle	1
4	Feed box	1

13. Screen and Screen Frame



Note: Please refer to material list 14 about the parts code.

14. Screen and Screen Frame Parts List

No.	Name	Quantity
1	Screen	1
2	Screen bracket	1